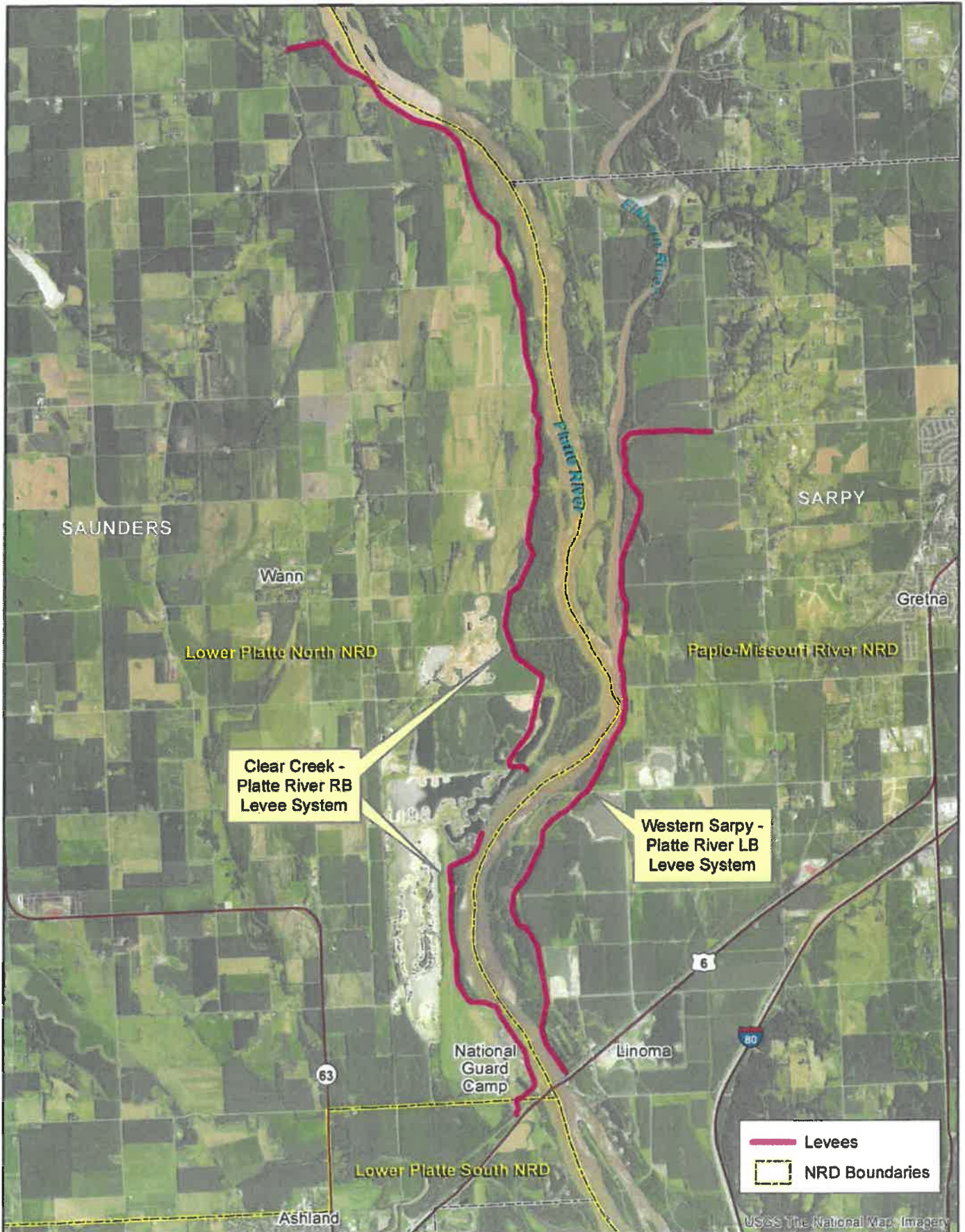
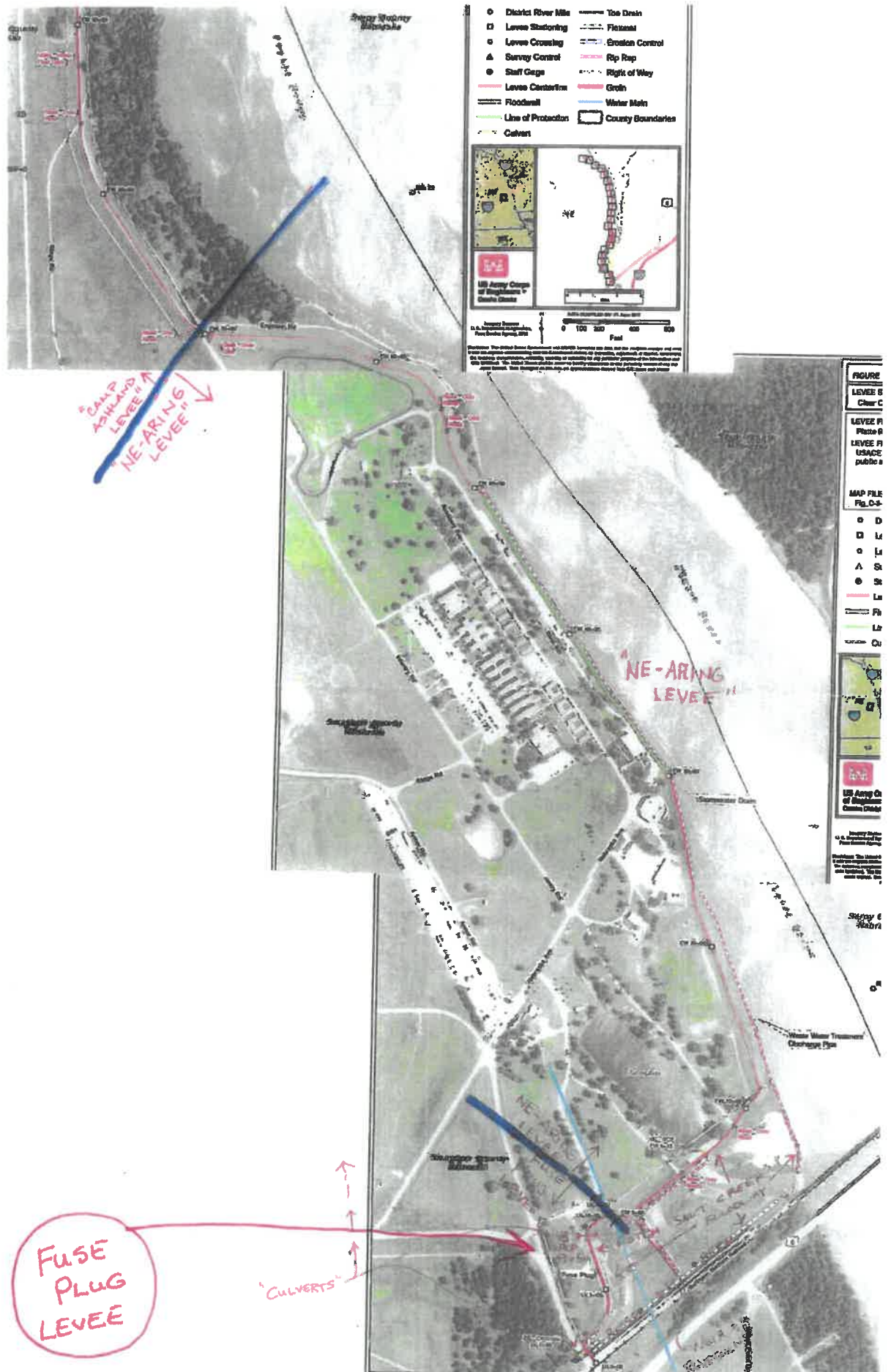
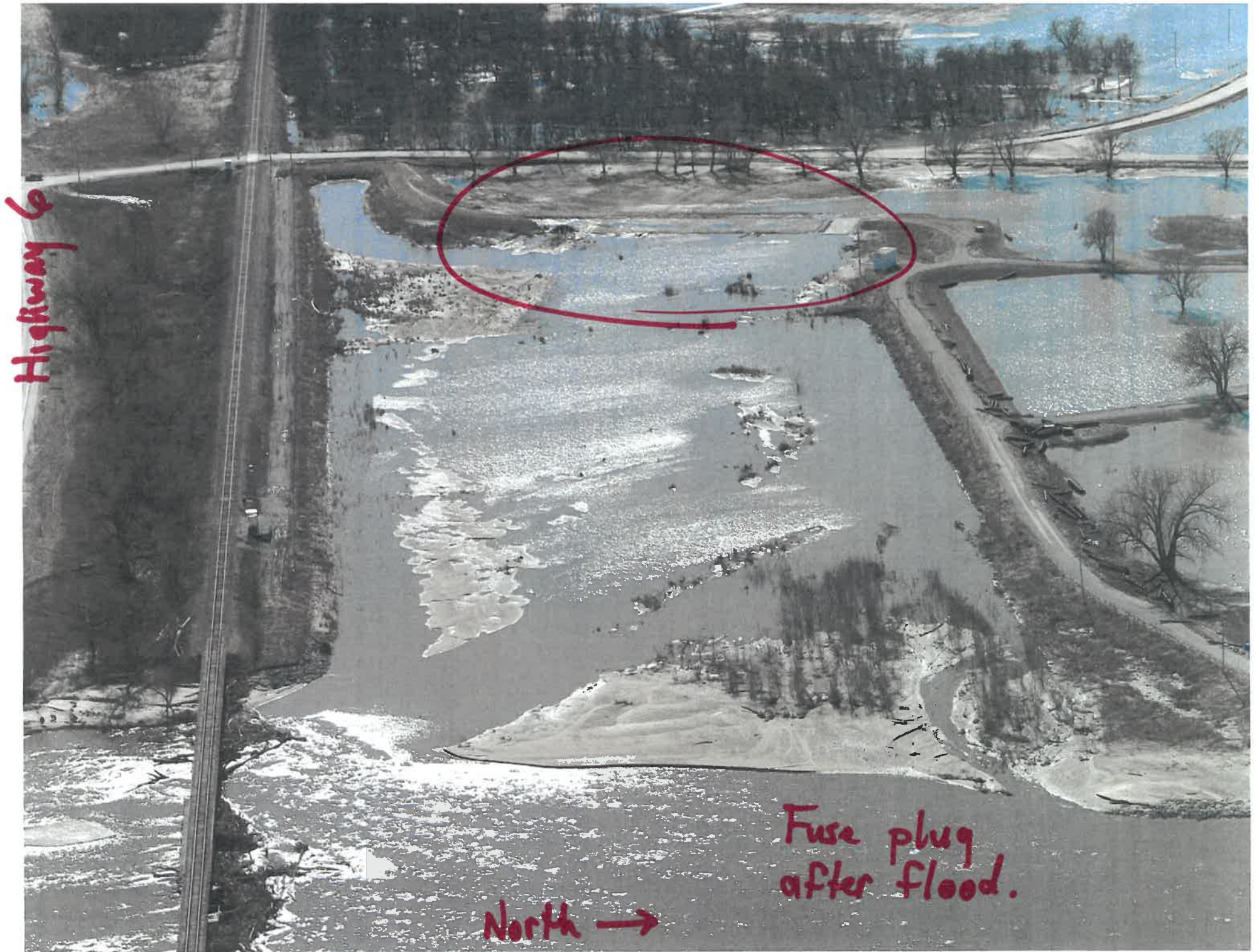


Western Sarpy Clear Creek Project



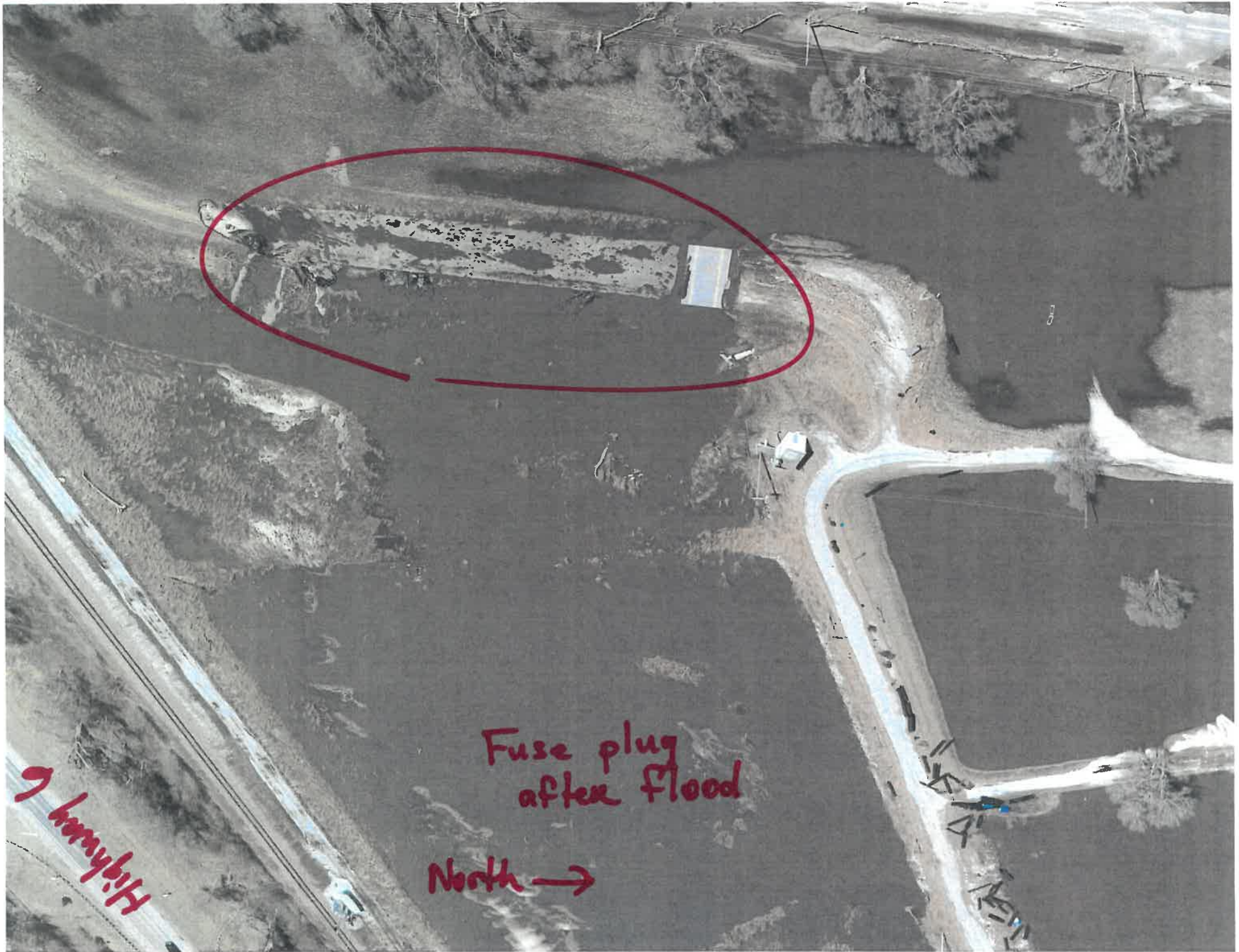




Highway 6

North →

Fuse plug
after flood.





LOWER PLATTE NORTH NATURAL
RESOURCES DISTRICT

FUSE PLUG LEVEE REPAIR NATIONAL GUARD CAMP ASHLAND, NE



LOCATION MAP



SITE MAP
NOT TO SCALE

SHEET INDEX

- A.1 COVER SHEET, GENERAL NOTES, AND QUANTITIES
- D.1 DETAILS
- P.1 PLAN VIEW
- P.2 PROFILE VIEW

QUANTITIES:

| ITEM NO. | DESCRIPTION | QUANTITY | UNIT |
|----------|----------------------------------|----------|------|
| 1 | MOBILIZATION | 1 | LS |
| 2 | SITE CLEANUP AND DEBRIS REMOVAL | 1 | LS |
| 3 | AS-BUILT SURVEY AND STAKING | 1 | LS |
| 4 | REPAIR OF CLAY PLATFORM | 1 | LS |
| 5 | REPAIR OF CONCRETE PLATFORM | 1 | LS |
| 6 | BLOW SAND FOR FUSE PLUG REPAIR | 2510 | CY |
| 7 | CEMENTERAKE | 1000 | SY |
| 8 | TOPSOIL | 373 | CY |
| 9 | STABILIZED CONSTRUCTION ENTRANCE | 1 | EA |
| 10 | SILT FENCE | 750 | LF |
| 11 | EROSION CONTROL BLANKET | 1480 | SY |
| 12 | SEEDING | 4 | AC |

NEBRASKA 811 www.nrc1.com WAS CONTACTED DURING THE PRELIMINARY DESIGN PHASE OF THIS PROJECT. THE LIST OF UTILITIES BELOW WERE LISTED AS HAVING A POSSIBILITY FOR UTILITIES IN THE VICINITY OF THE PROJECT SITE. UTILITIES THAT WERE MARKED WERE SURVEYED BUT ARE SHOWN AS APPROXIMATE LOCATIONS ONLY. CONTRACTOR IS RESPONSIBLE FOR VERIFYING ALL UTILITIES AS NOTED IN GENERAL NOTE #2 ON THIS SHEET.



GENERAL NOTES:

1. ALL WORK SHALL BE DONE IN ACCORDANCE WITH U.S. ARMY CORPS OF ENGINEERS EM 1110-G-1913, DESIGN AND CONSTRUCTION OF LEVEES, AND THE DETAILED NOTES AND SPECIFICATIONS FOR THIS PROJECT. IF A CONFLICT EXISTS BETWEEN THE TWO, THE MORE STRINGENT SPECIFICATION SHALL GOVERN.
2. THE LOCATIONS OF ALL AERIAL AND UNDERGROUND UTILITY FACILITIES ARE APPROXIMATE OR MAY NOT BE INDICATED IN THESE PLANS. UNDERGROUND FACILITIES, WHETHER INDICATED OR NOT, SHALL BE LOCATED AND FLAGGED BY THE CONTRACTOR AND UTILITY COMPANIES 48 HOURS BEFORE WORK IS STARTED. VERIFY UTILITY LOCATIONS BY CONTACTING THE NEBRASKA DIGGERS HOTLINE (ONLINE AT WWW.NEADIG.COM AND/OR CALL 800-351-4889 OR 911). THE CONTRACTOR SHALL BE REQUIRED TO NOTIFY AND COORDINATE ALL NECESSARY UTILITY SERVICE INTERRUPTIONS WITH THE OWNER. IT SHALL BE THE RESPONSIBILITY OF THE CONTRACTOR TO PROTECT ALL EXISTING UTILITIES, PAVEMENT, STRUCTURES, FENCES, POLES, SIGNS, TREES, IRRIGATION LINES, SPRINKLER HEADS, SUB-DRAINS AND OTHER IMPROVEMENTS NOT DESIGNATED FOR REMOVAL. ANY DAMAGE CAUSED BY THE CONTRACTOR'S OPERATIONS SHALL BE REPAIRED BY THE CONTRACTOR AT THE CONTRACTOR'S EXPENSE.
3. THE COMMUNICATION UTILITY LINES INCLUDE TELEPHONE, INTERNET AND CABLE, AND MAY INCLUDE FIBER OPTIC LINES.
4. CONTOURS SHOWN ON THE PLANS ARE 2' CONTOURS FROM LIDAR DATA. ELEVATIONS CALLED OUT ON THE PLANS ARE REFERENCED TO MVD 29 VERTICAL DATUM. HORIZONTAL CONTROL IS MADS NEBRASKA STATE PLANE.
5. CONTRACTOR SHALL COORDINATE REMOVAL OR RELOCATION OF ANY EXISTING UTILITY WITH UTILITY OWNER (GAS, WATER, POWER, ETC.). ALL TELEPHONES, WATER, ELECTRIC AND GAS METERS AND ASSOCIATED EQUIPMENT SHALL REMAIN PROPERTY OF THE VARIOUS UTILITY COMPANIES.
6. CONTRACTOR SHALL LIMIT CONSTRUCTION OPERATIONS WITHIN THE CONSTRUCTION LIMITS SHOWN ON PLANS. CONTRACTOR SHALL ALSO DEVELOP A PROJECT SEQUENCING PLAN. PLAN MUST BE APPROVED BY ENGINEER PRIOR TO CONSTRUCTION BEGINNING.
7. CLEARING AND GRUBBING TO BE PERFORMED ONLY IN LOCATIONS ABSOLUTELY NECESSARY TO CONSTRUCT AND ACCESS THE SITE FEATURES. CONTRACTOR SHALL LIMIT CONSTRUCTION OPERATIONS TO THE CONSTRUCTION LIMITS SHOWN ON PLANS UNLESS OTHERWISE APPROVED BY THE ENGINEER. ALL DISTURBED AREAS SHALL BE RESTORED TO ORIGINAL CONDITIONS BY SMOOTHING COMPACTED SOILS PRIOR TO FINISHED GRADING AND SEEDING WITH SPECIFIED MIX METHODS. DISTURBED AREAS ON SLOPES 3:1V OR GREATER SHALL RECEIVE EROSION CONTROL BLANKET.
8. CONTRACTOR MUST ADHERE TO THE REQUIREMENTS OF THE 404048 PERMIT GRANTED BY THE UNITED STATES ARMY CORPS OF ENGINEERS FOR THIS PROJECT. A COPY OF THE REQUIREMENTS WILL BE PROVIDED TO THE SELECTED CONTRACTOR, OR UPON REQUEST.
9. PRIOR TO ANY CONSTRUCTION WORK (INCLUDING TREE REMOVAL) WITHIN THE HEATING SEASON OF MIGRATORY BIRDS (APRIL 1ST TO JULY 15TH) THE CONTRACTOR MUST ARRANGE A SITE INSPECTION FOR ACTIVE MIGRATORY BIRD NESTS WITH THE FIELD REPRESENTATIVE. IF ACTIVE NESTS OF MIGRATORY BIRDS ARE OBSERVED WITHIN THE AREA TO BE DISTURBED, CONSTRUCTION WORK CANNOT COMMENCE AND THE FIELD REPRESENTATIVE MUST CONTACT THE LEASE FOR CONSULTATION WITH USFWS.
10. NO FLOW MODIFICATIONS OR DISTURBANCES FROM CONSTRUCTION ACTIVITIES SHALL OCCUR IN DRAINAGE PENETRATION DITCHES FROM FEBRUARY 1ST THROUGH JULY 31ST, IN CORRELATION WITH THE SPANNING PERIOD OF THE PALLO STURGEON AND AS IDENTIFIED WITHIN THE 404 PERMIT.
11. THIS PROJECT IS LOCATED WITHIN THE NORTHERN LONG-EARED BAT RANGE AND WHITE NOSE SYNDROME ZONE. THERE ARE NO KNOWN HIBERNACULA SITES OR KNOWN MATERNITY ROOST TREES WITHIN A 1/4 MILE OF THE PERMIT REVIEW AREA AT THIS TIME. TREE REMOVAL AS DESCRIBED WITHIN THE 404 PERMIT, SHALL NOT OCCUR FROM JUNE 1ST THROUGH JULY 31ST. IF HIBERNACULA SITES OR MATERNITY ROOST TREES ARE IDENTIFIED WITHIN 1/4 MILE OF CONSTRUCTION ACTIVITIES, TREE REMOVAL WILL NOT BE PERMITTED AT ANY TIME OF THE YEAR.
12. TREE REMOVAL SHALL INCLUDE THE FULL REMOVAL OF ALL TREES INCLUDING THE ROOTBALL AND BACKFILLING THE ROOTBALL WITH APPROPRIATE FILL MATERIAL. IF THE TREE FALLS WITHIN 5 FEET OF THE PROPOSED LEVEE TOE, THE ROOTBALL SHALL BE CLASS "A" SUBMITTANCE. TREES SHALL BE HAULED AND DISPOSED OFF OF SITE. NO BURNING OF TREES SHALL BE ALLOWED ON THE SITE.
13. ALL RUBBLE DEBRIS FROM CONSTRUCTION ACTIVITIES MUST BE REMOVED FROM THE SITE UPON PROJECT COMPLETION. ALL DISTURBED AREAS SHALL BE RESTORED TO ORIGINAL CONDITIONS BY SMOOTHING COMPACTED SOILS PRIOR TO FINISHED GRADING AND SEEDING WITH SPECIFIED MIX AND METHODS. DISTURBED AREAS ON SLOPES 3:1V OR GREATER SHALL RECEIVE EROSION CONTROL BLANKET.
14. THE CONTRACTOR SHALL NOT ALLOW THE PONDING OF WATER WITHIN THE CONSTRUCTION AREA AT ANY TIME. MAINTAIN ALL EXISTING DRAINAGE PATTERNS.
15. THE CONTRACTOR SHALL CONDUCT ALL OPERATIONS AND MAINTAIN CONSTRUCTION.
16. WORK AREA IN A SAFE MANNER IN ACCORDANCE WITH OSHA COMPLIANCE.
17. RAMP AND HAUL ROUTES THAT THE CONTRACTOR CONSTRUCTS FOR HAULING MATERIAL AND TRANSPORTING EQUIPMENT SHALL BE CONSIDERED INCIDENTAL TO MOBILIZATION.
18. PROPERTY BOUNDARIES ARE SHOWN FROM THE SAUNDERS COUNTY GIS WEBSITE. [HTTP://WWW.SAUNDERS.CO.NE/GIS](http://WWW.SAUNDERS.CO.NE/GIS)
19. SILT FENCES SHALL BE PLACED ALONG EACH SIDE (BALT CREEK AND PLATTE RIVER SIDES) OF THE DISTURBED AREA. SEE DETAIL 3 SHEET D.1. THE SILT FENCE MUST BE PLACED WITHIN THE LIMITS OF CONSTRUCTION.
20. CONTRACTOR IS RESPONSIBLE FOR CLEAN UP AND MAINTENANCE OF THE SILT FENCE UNTIL VEGETATIVE COVER HAS BEEN FULLY RESTORED. ESTABLISHED AS DETERMINED BY THE FIELD ENGINEER (MINIMUM OF 70% ESTABLISHED). CONTRACTOR IS RESPONSIBLE FOR FINAL REMOVAL OF SILT FENCE AND CONSTRUCTION ENTRANCES.
21. LIMITS OF CONSTRUCTION ARE SHOWN ON THE PLANS.
22. ANY SOIL BROUGHT IN FROM OFF SITE MUST BE OBTAINED FROM AN APPROVED LOCATION THAT DOES NOT AFFECT WETLANDS, TER SPECIES, OR CULTURAL/HISTORICAL RESOURCES.
23. THE CONTRACTOR IS RESPONSIBLE FOR REPAIRING ANY CONCRETE ROAD DAMAGED DURING CONSTRUCTION OPERATIONS OR GRASSED SURFACES OUTSIDE THE LIMITS OF CONSTRUCTION. MAY BE DAMAGED DURING THE CONTRACTOR'S USE OF THESE AREAS. REPAIR COSTS SHALL BE INCIDENTAL TO THE PROJECT.
24. THE QUANTITIES SHOWN FOR SEEDING INCLUDE ALL NON-PAVED AREAS WITHIN THE LIMITS OF CONSTRUCTION AND DOES NOT ACCOUNT FOR ANY AREA THAT IS DISTURBED OUTSIDE THE LIMITS OF CONSTRUCTION OR WITHIN STAGING LOCATIONS. ALL DISTURBED AREAS OUTSIDE OF THE LIMITS OF CONSTRUCTION SHALL BE RESTORED TO ORIGINAL CONDITIONS BY SMOOTHING COMPACTED SOILS AND SEEDING WITH SPECIFIED MIX AND METHODS. DISTURBED AREAS ON SLOPES 3:1V OR GREATER SHALL RECEIVE EROSION CONTROL BLANKET. RESTORATION OF AREAS OUTSIDE THE LIMITS OF CONSTRUCTION WILL BE CONSIDERED INCIDENTAL TO THE PROJECT.
25. THE GRADES, ELEVATIONS, DIMENSIONS, LOCATIONS AND FIELD MEASUREMENTS OR ANY DRAWINGS OR SPECIFICATIONS ISSUED BY THE ENGINEER, OR THE WORK INSTALLED BY OTHER CONTRACTORS, ARE NOT GUARANTEED BY THE ENGINEER OR THE OWNER. THE CONTRACTOR SHALL BE RESPONSIBLE FOR VERIFYING THE ACCURACY OF ALL GRADES, ELEVATIONS, DIMENSIONS, LOCATIONS AND FIELD MEASUREMENTS. IN ALL CASES OF THE INTERSECTION OF ITS WORK WITH EXISTING OR OTHER WORK, THE CONTRACTOR SHALL VERIFY AT THE SITE ALL DIMENSIONS RELATED TO SUCH EXISTING OR OTHER WORK. ANY ERRORS DUE TO CONTRACTOR'S FAILURE TO VERIFY ALL SUCH GRADES, ELEVATIONS, DIMENSIONS, LOCATIONS, OR FIELD MEASUREMENTS SHALL BE PROMPTLY RECTIFIED BY THE CONTRACTOR WITHOUT ANY ADDITIONAL COSTS TO THE OWNER OR EXTENSION OF CONTRACT TIME.
26. EXCAVATED MATERIAL CAN BE PLACED IN THE DESIGNATED STOCKPILE LOCATIONS (SHOWN ON THE PLANS) FOR REUSE OR HAULED OFF SITE. STOCKPILED MATERIAL SHALL NOT EXCEED 10 FT IN HEIGHT AND SHALL HAVE SIDE SLOPES OF 3:1V MAXIMUM. STOCKPILED AREAS THAT ARE EXPECTED TO NOT BE USED WITHIN 14 DAYS SHALL BE SEEDER AND RINSED WITH PROTECTIVE EROSION CONTROL FENCING. THE COST OF STOCKPILE SEEDING AND FENCING SHALL BE CONSIDERED INCIDENTAL TO PROJECT EXCAVATION.
27. AS-BUILT REQUIRED FOR WORK BY CONTRACTOR FROM AN APPROVED BORROW SOURCE AND SHALL CONFORM TO THE REQUIREMENTS OF SPECIFICATION SECTION 0222.
28. THE CONTRACTOR SHALL HAVE AN INDEPENDENT REGISTERED LAND SURVEYOR CONDUCT AN AS-BUILT SURVEY OF ENTIRE 1/2 MILE WITHIN THE CONSTRUCTION LIMITS AT 30' INTERVALS TO ENSURE ELEVATIONS ARE WITHIN 0.0 TO 0.2 OF THE LEVEE DESIGN PROFILE. DEFICIENCIES SHALL BE CORRECTED AND LOCATION SHALL BE RE-SURVEYED. THE AS-BUILT SURVEY DATA, INCLUDING POINTS, CONTOURS AND BREAKLINES, SHALL BE SUBMITTED TO THE FIELD REPRESENTATIVE/ENGINEER TO VERIFY DOWN GRADES AND USE ON FUTURE MODIFICATIONS. INFORMATION WILL BE SUBMITTED WITH THE UPDATED CAN MANUAL TO THE U.S. ARMY CORPS OF ENGINEERS.
29. THE USE OF UNMANNED AIRCRAFT SYSTEMS NEAR THE PROJECT SITE AND BURLINGTON-NORTHERN SANTA FE (BNSTF) RAILROAD FACILITIES SHALL ONLY TAKE PLACE WHEN PRIOR AUTHORIZATION HAS BEEN GRANTED BY BNSTF.
30. CONTRACTOR'S EMPLOYEES MAY BE REQUIRED TO COMPLETE A BACKGROUND SCREENING FOR WORK ON THE NATIONAL GUARD CAMP.

DESIGNED BY:

FYRA
12702 WESTPORT PARKWAY, SUITE 300
OMAHA, NE 68138
402.502.7131
WWW.FYRAENGINEERING.COM

OWNER:

 LOWER PLATTE NORTH NRD
511 COMMERCIAL PARK ROAD
WAHOO, NE 68066



12702 Westport Parkway, Ste 300
Omaha, Nebraska 68138
402.502.7131
www.fyraengineering.com

FUSE PLUG LEVEE REPAIR
NATIONAL GUARD CAMP
ASHLAND, NEBRASKA
2019

ENGINEER'S SEAL

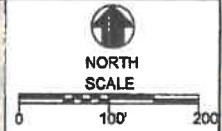
REVISIONS

| NO. | DATE |
|-----|------|
| | |
| | |
| | |
| | |
| | |
| | |
| | |
| | |
| | |
| | |

DESIGNED BY: MCR
DRAWN BY: EBR
DATE: 02-18-2019
PROJECT NO: 022-18-03
DATE: 02/18/2019

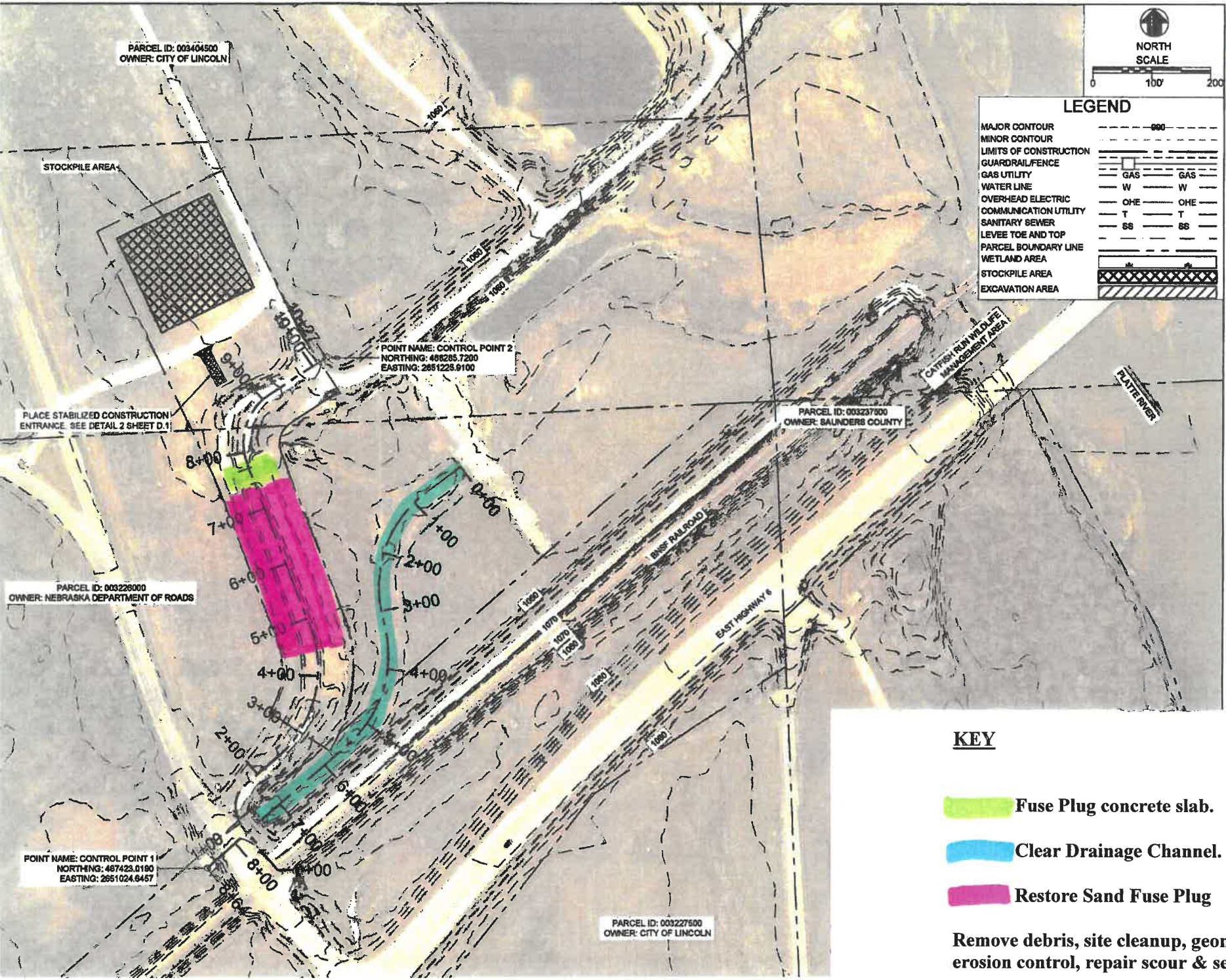
TITLE
COVER SHEET,
GENERAL NOTES, AND QUANTITIES

SHEET
A.1



LEGEND

| | | |
|------------------------|-----|-----|
| MAJOR CONTOUR | --- | 000 |
| MINOR CONTOUR | --- | |
| LIMITS OF CONSTRUCTION | --- | |
| GUARDRAIL/FENCE | --- | |
| GAS UTILITY | GAS | GAS |
| WATER LINE | W | W |
| OVERHEAD ELECTRIC | OHE | OHE |
| COMMUNICATION UTILITY | T | T |
| SANITARY SEWER | SS | SS |
| LEVEE TOE AND TOP | --- | |
| PARCEL BOUNDARY LINE | --- | |
| WETLAND AREA | --- | |
| STOCKPILE AREA | --- | |
| EXCAVATION AREA | --- | |



FUSE PLUG LEVEE REPAIR
NATIONAL GUARD CAMP
 ASHLAND, NEBRASKA
 2019

ENGINEER'S SEAL

KEY

- Fuse Plug concrete slab.
- Clear Drainage Channel.
- Restore Sand Fuse Plug

Remove debris, site cleanup, geomembrane, erosion control, repair scour & seeding.

