




## LOWER PLATTE SOUTH natural resources district

3125 Portia Street | P.O. Box 83581 • Lincoln, Nebraska 68501-3581  
P: 402.476.2729 • F: 402.476.6454 | www.lpsnrd.org

### Memorandum

**Date:** September 9, 2020  
**To:** Platte River Subcommittee  
**From:** David Potter, Assistant General Manager   
**Subject:** September 2, 2020 Platte River Subcommittee Meeting Minutes

The LPSNRD Platte River Subcommittee met on Wednesday, September 2<sup>nd</sup> at 5:30 p.m. at the Lower Platte South NRD office. Members present included Don Jacobson, Milt Schmidt, Karen Amen, Gary Hellerich, Chelsea Johnson, Dan Steinkruger, and Ray Stevens. Members absent were Sarah Wilson. Others present included Paul Zillig, David Potter, and Mike Murren. Chair Jacobson called the meeting to order and reviewed the agenda. The two agenda items included:

#### Cost-share assistance for the repairs to the Guard Camp Fuse Plug Levee.

The NRDs (Papio-Missouri NRD, Lower Platte North NRD, and Lower Platte South NRD) are the local sponsors for the Corps' Western Sarpy Clear Creek (WSCC) Flood Reduction Project (see project map). The entities approved a Pre-Construction, Engineering, and Design (PED) agreement in 2001 for the project, at that point, Lower Platte North initially agreed it would be the responsible for the operation & maintenance for that portion of the project on the west side of the Platte River. As shown on the map, 99% of the 12 mile "Clear Creek" portion of the project is in Lower Platte North NRD.

As design progressed, the project became more complicated in the area of Camp Ashland/Guard Camp and this area was divided into sections called "Camp Ashland Levee", "NE-ARING Levee", and "Fuse Plug Levee" (see attached map). In 2003 the NRDs entered into an agreement with the Nebraska National Guard for the responsibilities related to the NE-ARING Levee.

The design of the Fuse Plug Levee was agreed upon, and the operation and maintenance responsibilities for these three portions was to be addressed once the Corps completed the Operation & Maintenance Manual for the project. We are still waiting for the O&M Manual from the Corps and we anticipate the Manual will be finalized in January 2021. Staff discussions between the NRDs, Corps and National Guard has resulted in a proposed agreement with Lower Platte North continuing to operate the Fuse Plug Levee and both NRDs sharing equally in the cost of the O&M of the Fuse Plug Levee.

The March 2019 flood event damaged many areas along the Platte River. Both sides of the Western Sarpy Clear Creek Levee were compromised. The flood also caused significant damage to the fuse plug levee, floodway, and threatened

the City of Lincoln's water main near the National Guard Camp at Ashland. The Western Sarpy Clear Creek Levee and floodway were covered by the US Army Corps of Engineers through the PL84-99 program. The project sponsors for the USACE PL84-99 application included PMRNRD, LPNNRD & LPSNRD. The total construction cost was around \$9.2 million and there was no cost to the NRDs. The Fuse Plug repair was not part of the PL84-99 project since it's not considered part of the federal levee. FEMA assisted Lower Platte North NRD to rebuild the Fuse Plug Levee at 75%. The Fuse Plug repair included cost for engineering by FYRA (\$12,971.33) and reconstruction by Clark Construction (\$104,162.00) which totaled \$117,133.33. FEMA reimbursed LPNNRD \$87,850 leaving a total local cost of \$29,283.33. See attached photos and documents showing location, flood destruction, plans, work completed, and costs.

An operation and maintenance addendum to the 2003 Interlocal Agreement for the Western Sarpy/Clear Creek Flood Control Project has been in the works for the last two years. It had been discussed and formulated in a draft agreement that LPNNRD is responsible for the Fuse Plug Levee and that LPSNRD would reimburse half of the reasonable cost and expense incurred by LPNNRD. This addendum has not yet been approved and the Fuse Plug Levee has been already repaired. LPNNRD is seeking reimbursement from LPSNRD for 50% cost-share assistance on the local share of \$29,283.33, or \$14,641.66. LPSNRD has \$50,000 in the FY21 budget for operation & maintenance of Western Sarpy/Clear Creek Project.

The background information was provided to the subcommittee and discussed. Zillig and Murren answered questions of the project and of the Clear Creek Levee system. **It was moved by Steinkruger, seconded by Stevens and unanimously approved to recommend the Board of Directors approve the 50% cost-share assistance on the local share of \$29,283.33, or \$14,641.66 from Lower Platte South NRD for the repairs to the Guard Camp Fuse Plug Levee.**

#### Measurable Goals.

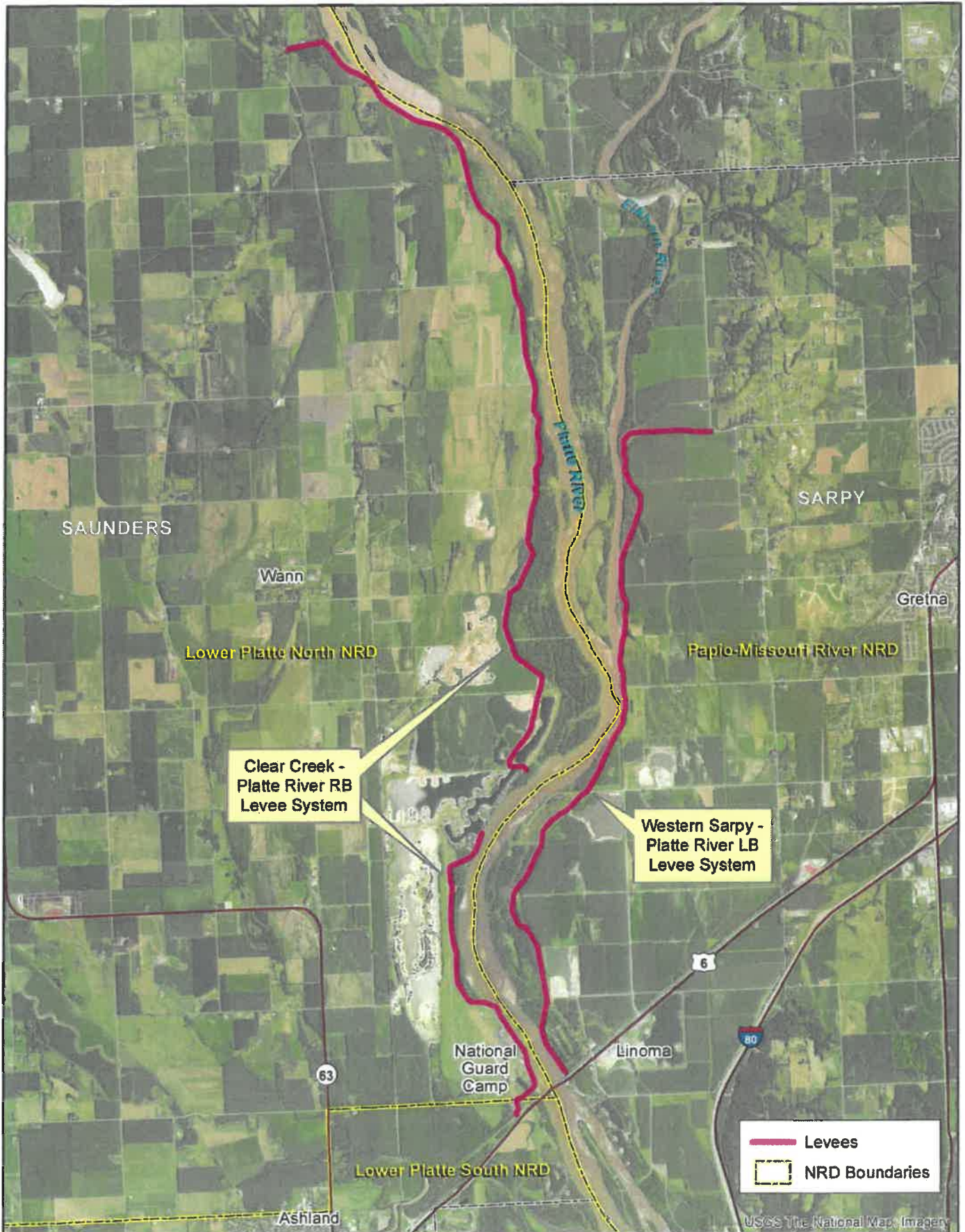
As directed in the LPSNRD 2019 Master Plan, a list of measurable goals is to be developed for each subcommittee for the fiscal year and then those goals are to be reviewed each year to see what has been accomplished. A nine-month review was presented earlier to the subcommittees and now a 12-month review was completed. The measurable goal for FY20 was to hold one tour of the Platte River for LPRCA reps and/or LPSNRD and PMRNRD. Nothing was planned last fall and with the pandemic nothing had been planned for this summer. The district has discussed a possible tour with PMRNRD and we're hopeful we can get something scheduled for early next summer. The goal for FY21 is again to hold one tour of the Platte River for LPRCA reps and/or LPSNRD and PMRNRD.

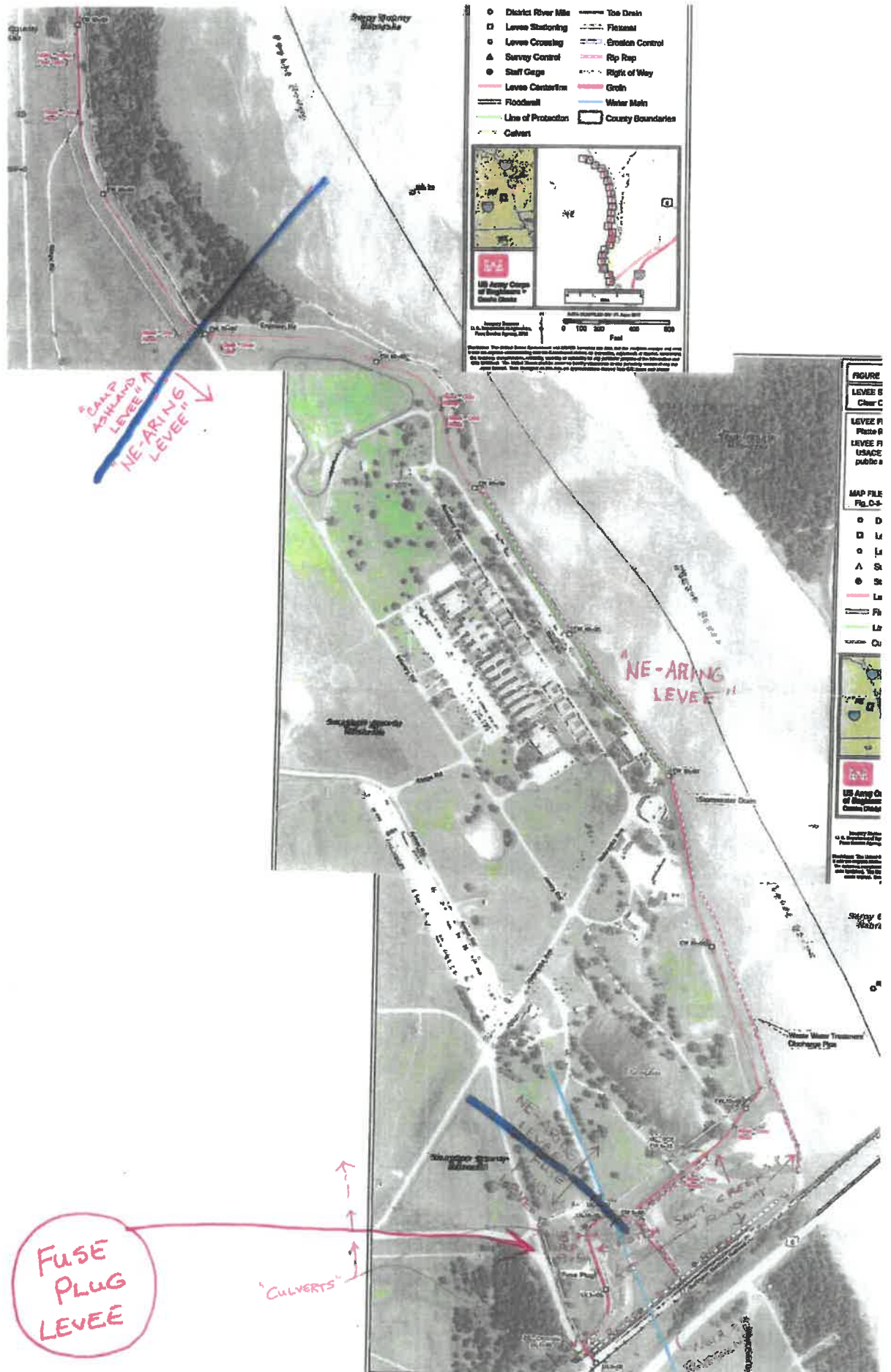
Potter presented the background information and explained the status of the measurable goal. **It was moved by Hellerich, seconded by Schmidt and unanimously approved to accept the FY21 measurable goals for the Platte River subcommittee and submit the goals to the Finance & Planning Subcommittee for inclusion in the FY2021 Long Range Implementation Plan.**

With no further business or discussion, the meeting adjourned at 5:57 p.m.

pc: File

# Western Sarpy Clear Creek Project







# LOWER PLATTE NORTH Natural Resources District

PO Box 126 511 Commercial Park Road Wahoo, NE 68066

Phone 402.443.4675 Fax 402.443.5339

lpnnrd@lpnnrd.org www.lpnnrd.org

August 20, 2020

**COPY**

Lower Platte South NRD  
c/o Paul Zillig  
PO Box 83581  
Lincoln, NE 69501-3581

Mr. Paul Zillig and Board of Directors,

As we are all aware, we experienced a catastrophic flood event in March 2019. The flood caused significant damage to the Ashland National Guard Camp Fuse Plug Levee, Floodway and threatened the City of Lincoln's water main in this location (see pictures). We are fortunate that the destruction to the floodway was covered by the Corps of Engineers through PL 84-99 and FEMA assisted Lower Platte North NRD to rebuild the Fuse Plug Levee at 75%. The Fuse Plug repair included cost for engineering by FYRA (\$12,971.33) and reconstruction by Clark Construction (\$104,162.00) which totals \$117,133.33 (see attached invoices). FEMA reimbursed our District \$87,850.00 making the local cost \$29,283.33.

Also, for the past two years we (LPS, LPN, Papio, COE and NE-ARNG) have been working on an Operation & Maintenance Addendum to the 2003 Interlocal Agreement for the Western Sarpy/Clear Creek Flood Control Project. This addendum has been held up by real estate and easement issues and now delayed by the pandemic. In this addendum we are discussing who is responsible for O & M and Flood Fight Authority. In regard to the Guard Camp Fuse Plug location, the draft addendum states that "LPNNRD is responsible for the "Fuse Plug Levee" and LPSNRD shall reimburse ½ of the reasonable cost and expense incurred by LPNNRD" (2) LPSNRD is responsible for the "BNSF RR Berm" and "Salt Creek Floodway" and LPNNRD shall reimburse ½ of the reasonable cost and expense incurred by LPSNRD". Since this addendum is not final, it is somewhat assumed as a gentlemen's agreement that our District's would assist with significant O & M cost.

With this information the Lower Platte North NRD would appreciate cost-share assistance of 50% on the local share of \$29,283.33 or \$14,641.66 from Lower Platte South NRD for the repairs to the Guard Camp Fuse Plug Levee.

If you have any questions please contact me 443-4675 or [bheimann@lpnnrd.org](mailto:bheimann@lpnnrd.org)

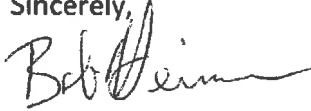
protecting lives

protecting property

protecting the future

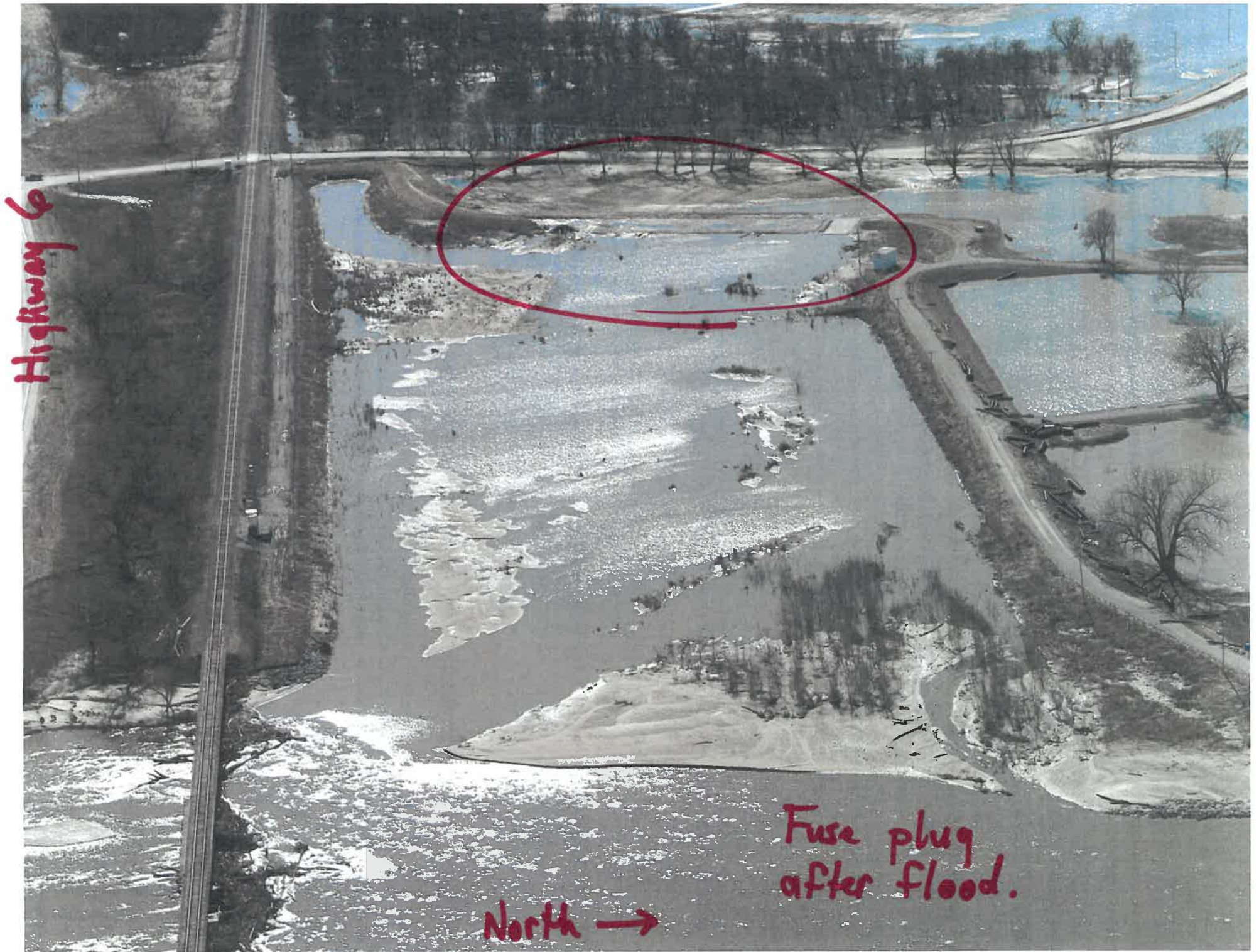


Sincerely,

A handwritten signature in black ink, appearing to read "Bob Heimann". The signature is written in a cursive style with a long horizontal flourish extending to the right.

**Bob Heimann**

**O & M Manager**



Highway 6

North →

Fuse plug  
after flood.

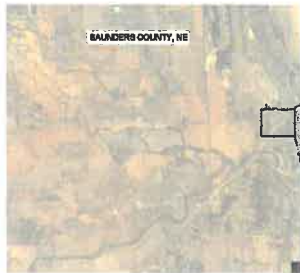






LOWER PLATTE NORTH NATURAL  
RESOURCES DISTRICT

# FUSE PLUG LEVEE REPAIR NATIONAL GUARD CAMP ASHLAND, NE



LOCATION MAP



SITE MAP  
NOT TO SCALE

**SHEET INDEX**

- A.1 COVER SHEET, GENERAL NOTES, AND QUANTITIES
- D.1 DETAILS
- P.1 PLAN VIEW
- P.2 PROFILE VIEW

**QUANTITIES:**

ITEM NO.	DESCRIPTION	QUANTITY	UNIT
1	MOBILIZATION	1	LS
2	SITE CLEANUP AND DEBRIS REMOVAL	1	LS
3	AS-BUILT SURVEY AND STAKING	1	LS
4	REPAIR OF CLAY PLATFORM	1	LS
5	REPAIR OF CONCRETE PLATFORM	1	LS
6	BLOW SAND FOR FUSE PLUG REPAIR	2510	CY
7	CEMENTERAKE	1000	SY
8	TOPSOIL	373	CY
9	STABILIZED CONSTRUCTION ENTRANCE	1	EA
10	SILT FENCE	750	LF
11	EROSION CONTROL BLANKET	1480	SY
12	SEEDING	4	AC

NEBRASKA 811 [www.nrc1.com](http://www.nrc1.com) WAS CONTACTED DURING THE PRELIMINARY DESIGN PHASE OF THIS PROJECT. THE LIST OF UTILITIES BELOW WERE LISTED AS HAVING A POSSIBILITY FOR UTILITIES IN THE VICINITY OF THE PROJECT SITE. UTILITIES THAT WERE MARKED WERE SURVEYED BUT ARE SHOWN AS APPROXIMATE LOCATIONS ONLY. CONTRACTOR IS RESPONSIBLE FOR VERIFYING ALL UTILITIES AS NOTED IN GENERAL NOTE #2 ON THIS SHEET.



**GENERAL NOTES:**

1. ALL WORK SHALL BE DONE IN ACCORDANCE WITH U.S. ARMY CORPS OF ENGINEERS EM 1110-G-1913, DESIGN AND CONSTRUCTION OF LEVEES, AND THE DETAILED NOTES AND SPECIFICATIONS FOR THIS PROJECT. IF A CONFLICT EXISTS BETWEEN THE TWO, THE MORE STRINGENT SPECIFICATION SHALL GOVERN.
2. THE LOCATIONS OF ALL AERIAL AND UNDERGROUND UTILITY FACILITIES ARE APPROXIMATE OR MAY NOT BE INDICATED IN THESE PLANS. UNDERGROUND FACILITIES, WHETHER INDICATED OR NOT, SHALL BE LOCATED AND FLAGGED BY THE CONTRACTOR AND UTILITY COMPANIES 48 HOURS BEFORE WORK IS STARTED. VERIFY UTILITY LOCATIONS BY CONTACTING THE NEBRASKA DIGGERS HOTLINE (ONLINE AT [WWW.NEADIG.COM](http://WWW.NEADIG.COM) AND/OR CALL 800-351-4889 OR 911). THE CONTRACTOR SHALL BE REQUIRED TO NOTIFY AND COORDINATE ALL NECESSARY UTILITY SERVICE INTERRUPTIONS WITH THE OWNER. IT SHALL BE THE RESPONSIBILITY OF THE CONTRACTOR TO PROTECT ALL EXISTING UTILITIES, PAVEMENT, STRUCTURES, FENCES, POLES, SIGNS, TREES, IRRIGATION LINES, SPRINKLER HEADS, SUB-DRAINS AND OTHER IMPROVEMENTS NOT DESIGNATED FOR REMOVAL. ANY DAMAGE CAUSED BY THE CONTRACTOR'S OPERATIONS SHALL BE REPAIRED BY THE CONTRACTOR AT THE CONTRACTOR'S EXPENSE.
3. THE COMMUNICATION UTILITY LINES INCLUDE TELEPHONE, INTERNET AND CABLE, AND MAY INCLUDE FIBER OPTIC LINES.
4. CONTOURS SHOWN ON THE PLANS ARE 2' CONTOURS FROM LIDAR DATA. ELEVATIONS CALLED OUT ON THE PLANS ARE REFERENCED TO MVD 29 VERTICAL DATUM. HORIZONTAL CONTROL IS MADS NEBRASKA STATE PLANE.
5. CONTRACTOR SHALL COORDINATE REMOVAL OR RELOCATION OF ANY EXISTING UTILITY WITH UTILITY OWNER (GAS, WATER, POWER, ETC.). ALL TELEPHONES, WATER, ELECTRIC AND GAS METERS AND ASSOCIATED EQUIPMENT SHALL REMAIN PROPERTY OF THE VARIOUS UTILITY COMPANIES.
6. CONTRACTOR SHALL LIMIT CONSTRUCTION OPERATIONS WITHIN THE CONSTRUCTION LIMITS SHOWN ON PLANS. CONTRACTOR SHALL ALSO DEVELOP A PROJECT SEQUENCING PLAN. PLAN MUST BE APPROVED BY ENGINEER PRIOR TO CONSTRUCTION BEGINNING.
7. CLEARING AND GRUBBING TO BE PERFORMED ONLY IN LOCATIONS ABSOLUTELY NECESSARY TO CONSTRUCT AND ACCESS THE SITE FEATURES. CONTRACTOR SHALL LIMIT CONSTRUCTION OPERATIONS TO THE CONSTRUCTION LIMITS SHOWN ON PLANS UNLESS OTHERWISE APPROVED BY THE ENGINEER. ALL DISTURBED AREAS SHALL BE RESTORED TO ORIGINAL CONDITIONS BY SMOOTHING/COMPACTED SOILS PRIOR TO FINISHED GRADING AND SEEDING WITH SPECIFIED MIX METHODS. DISTURBED AREAS ON SLOPES 3:1V OR GREATER SHALL RECEIVE EROSION CONTROL BLANKET.
8. CONTRACTOR MUST ADHERE TO THE REQUIREMENTS OF THE 404048 PERMIT GRANTED BY THE UNITED STATES ARMY CORPS OF ENGINEERS FOR THIS PROJECT. A COPY OF THE REQUIREMENTS WILL BE PROVIDED TO THE SELECTED CONTRACTOR, OR UPON REQUEST.
9. PRIOR TO ANY CONSTRUCTION WORK (INCLUDING TREE REMOVAL) WITHIN THE HEATING SEASON OF MIGRATORY BIRDS (APRIL 1ST TO JULY 15TH) THE CONTRACTOR MUST ARRANGE A SITE INSPECTION FOR ACTIVE MIGRATORY BIRD NESTS WITH THE FIELD REPRESENTATIVE. IF ACTIVE NESTS OF MIGRATORY BIRDS ARE OBSERVED WITHIN THE AREA TO BE DISTURBED, CONSTRUCTION WORK CANNOT COMMENCE AND THE FIELD REPRESENTATIVE MUST CONTACT THE LEASE FOR CONSULTATION WITH USFWS.
10. NO FLOW MODIFICATIONS OR DISTURBANCES FROM CONSTRUCTION ACTIVITIES SHALL OCCUR IN DRAINAGE PENETRATION DITCHES FROM FEBRUARY 1ST THROUGH JULY 31ST, IN CORRELATION WITH THE SPANNING PERIOD OF THE PALLO STURGEON AND AS IDENTIFIED WITHIN THE 404 PERMIT.
11. THIS PROJECT IS LOCATED WITHIN THE NORTHERN LONG-EARED BAT RANGE AND WHITE NOSE SYNDROME ZONE. THERE ARE NO KNOWN HIBERNACULA SITES OR KNOWN MATERNITY ROOST TREES WITHIN A 1/4 MILE OF THE PERMIT REVIEW AREA AT THIS TIME. TREE REMOVAL AS DESCRIBED WITHIN THE 404 PERMIT, SHALL NOT OCCUR FROM JUNE 1ST THROUGH JULY 31ST. IF HIBERNACULA SITES OR MATERNITY ROOST TREES ARE IDENTIFIED WITHIN 1/4 MILE OF CONSTRUCTION ACTIVITIES, TREE REMOVAL WILL NOT BE PERMITTED AT ANY TIME OF THE YEAR.
12. TREE REMOVAL SHALL INCLUDE THE FULL REMOVAL OF ALL TREES INCLUDING THE ROOTBALL AND BACKFILLING THE ROOTBALL WITH APPROPRIATE FILL MATERIAL. IF THE TREE FALLS WITHIN 5 FEET OF THE PROPOSED LEVEE TOE, THE ROOTBALL SHALL BE CLASS "A" SUBMITTANCE. TREES SHALL BE HAULED AND DISPOSED OFF OF SITE. NO BURNING OF TREES SHALL BE ALLOWED ON THE SITE.
13. ALL RUBBLE DEBRIS FROM CONSTRUCTION ACTIVITIES MUST BE REMOVED FROM THE SITE UPON PROJECT COMPLETION. ALL DISTURBED AREAS SHALL BE RESTORED TO ORIGINAL CONDITIONS BY SMOOTHING/COMPACTED SOILS PRIOR TO FINISHED GRADING AND SEEDING WITH SPECIFIED MIX AND METHODS. DISTURBED AREAS ON SLOPES 3:1V OR GREATER SHALL RECEIVE EROSION CONTROL BLANKET.
14. THE CONTRACTOR SHALL NOT ALLOW THE PONDING OF WATER WITHIN THE CONSTRUCTION AREA AT ANY TIME. MAINTAIN ALL EXISTING DRAINAGE PATTERNS.
15. THE CONTRACTOR SHALL CONDUCT ALL OPERATIONS AND MAINTAIN CONSTRUCTION.
16. WORK AREA IN A SAFE MANNER IN ACCORDANCE WITH OSHA COMPLIANCE.
17. RAMP AND HAUL ROUTES THAT THE CONTRACTOR CONSTRUCTS FOR HAULING MATERIAL AND TRANSPORTING EQUIPMENT SHALL BE CONSIDERED INCIDENTAL TO MOBILIZATION.
18. PROPERTY BOUNDARIES ARE SHOWN FROM THE SAUNDERS COUNTY GIS WEBSITE. [HTTP://WWW.SAUNDERS.CO.NE/GIS](http://WWW.SAUNDERS.CO.NE/GIS)
19. SILT FENCES SHALL BE PLACED ALONG EACH SIDE (BALT CREEK AND PLATTE RIVER SIDES) OF THE DISTURBED AREA. SEE DETAIL 3 SHEET D.1. THE SILT FENCE MUST BE PLACED WITHIN THE LIMITS OF CONSTRUCTION.
20. CONTRACTOR IS RESPONSIBLE FOR CLEAN UP AND MAINTENANCE OF THE SILT FENCE UNTIL VEGETATIVE COVER HAS BEEN FULLY RESTORED/ ESTABLISHED AS DETERMINED BY THE FIELD ENGINEER (MINIMUM OF 70% ESTABLISHED). CONTRACTOR IS RESPONSIBLE FOR FINAL REMOVAL OF SILT FENCE AND CONSTRUCTION ENTRANCES.
21. LIMITS OF CONSTRUCTION ARE SHOWN ON THE PLANS.
22. ANY SOIL BROUGHT IN FROM OFF SITE MUST BE OBTAINED FROM AN APPROVED LOCATION THAT DOES NOT AFFECT WETLANDS, TER SPECIES, OR CULTURAL/HISTORICAL RESOURCES.
23. THE CONTRACTOR IS RESPONSIBLE FOR REPAIRING ANY CONCRETE ROAD DAMAGED DURING CONSTRUCTION OPERATIONS OR GRASSED SURFACES OUTSIDE THE LIMITS OF CONSTRUCTION. MAY BE DAMAGED DURING THE CONTRACTOR'S USE OF THESE AREAS. REPAIR COSTS SHALL BE INCIDENTAL TO THE PROJECT.
24. THE QUANTITIES SHOWN FOR SEEDING INCLUDE ALL NON-PAVED AREAS WITHIN THE LIMITS OF CONSTRUCTION AND DOES NOT ACCOUNT FOR ANY AREA THAT IS DISTURBED OUTSIDE THE LIMITS OF CONSTRUCTION OR WITHIN STAGING LOCATIONS. ALL DISTURBED AREAS OUTSIDE OF THE LIMITS OF CONSTRUCTION SHALL BE RESTORED TO ORIGINAL CONDITIONS BY SMOOTHING/COMPACTED SOILS AND SEEDING WITH SPECIFIED MIX AND METHODS. DISTURBED AREAS ON SLOPES 3:1V OR GREATER SHALL RECEIVE EROSION CONTROL BLANKET. RESTORATION OF AREAS OUTSIDE THE LIMITS OF CONSTRUCTION WILL BE CONSIDERED INCIDENTAL TO THE PROJECT.
25. THE GRADES, ELEVATIONS, DIMENSIONS, LOCATIONS AND FIELD MEASUREMENTS OR ANY DRAWINGS OR SPECIFICATIONS ISSUED BY THE ENGINEER, OR THE WORK INSTALLED BY OTHER CONTRACTORS, ARE NOT GUARANTEED BY THE ENGINEER OR THE OWNER. THE CONTRACTOR SHALL BE RESPONSIBLE FOR VERIFYING THE ACCURACY OF ALL GRADES, ELEVATIONS, DIMENSIONS, LOCATIONS AND FIELD MEASUREMENTS. IN ALL CASES OF THE INTERSECTION OF ITS WORK WITH EXISTING OR OTHER WORK, THE CONTRACTOR SHALL VERIFY AT THE SITE ALL DIMENSIONS RELATED TO SUCH EXISTING OR OTHER WORK. ANY ERRORS DUE TO CONTRACTOR'S FAILURE TO VERIFY ALL SUCH GRADES, ELEVATIONS, DIMENSIONS, LOCATIONS, OR FIELD MEASUREMENTS SHALL BE PROMPTLY RECTIFIED BY THE CONTRACTOR WITHOUT ANY ADDITIONAL COSTS TO THE OWNER OR EXTENSION OF CONTRACT TIME.
26. EXCAVATED MATERIAL CAN BE PLACED IN THE DESIGNATED STOCKPILE LOCATIONS (SHOWN ON THE PLANS) FOR REUSE OR HAULED OFFSITE. STOCKPILED MATERIAL SHALL NOT EXCEED 10 FT IN HEIGHT AND SHALL HAVE SIDE SLOPES OF 3:1V MAXIMUM. STOCKPILED AREAS THAT ARE EXPECTED TO NOT BE USED WITHIN 14 DAYS SHALL BE SEEDER AND RINSED WITH PROTECTIVE EROSION CONTROL FENCING. THE COST OF STOCKPILE SEEDING AND FENCING SHALL BE CONSIDERED INCIDENTAL TO PROJECT EXCAVATION.
27. AS-BUILT REQUIRED FOR WORK BY CONTRACTOR FROM AN APPROVED BORROW SOURCE AND SHALL CONFORM TO THE REQUIREMENTS OF SPECIFICATION SECTION 0222.
28. THE CONTRACTOR SHALL HAVE AN INDEPENDENT REGISTERED LAND SURVEYOR CONDUCT AN AS-BUILT SURVEY OF ENTIRE 1/2 MILE WITHIN THE CONSTRUCTION LIMITS AT 30' INTERVALS TO ENSURE ELEVATIONS ARE WITHIN 0.0 TO +0.2 OF THE LEVEE DESIGN PROFILE. DEFICIENCIES SHALL BE CORRECTED AND LOCATION SHALL BE RE-SURVEYED. THE AS-BUILT SURVEY DATA, INCLUDING POINTS, CONTOURS AND BREAKLINES, SHALL BE SUBMITTED TO THE FIELD REPRESENTATIVE/ENGINEER TO VERIFY DOWN GRADES AND USE ON FUTURE MODIFICATIONS. INFORMATION WILL BE SUBMITTED WITH THE UPDATED CAN MANUAL TO THE U.S. ARMY CORPS OF ENGINEERS.
29. THE USE OF UNMANNED AIRCRAFT SYSTEMS NEAR THE PROJECT SITE AND BURLINGTON-NORTHERN SANTA FE (BNSTF) RAILROAD FACILITIES SHALL ONLY TAKE PLACE WHEN PRIOR AUTHORIZATION HAS BEEN GRANTED BY BNSTF.
30. CONTRACTOR'S EMPLOYEES MAY BE REQUIRED TO COMPLETE A BACKGROUND SCREENING FOR WORK ON THE NATIONAL GUARD CAMP.

**DESIGNED BY:**

**FYRA**  
12702 WESTPORT PARKWAY, SUITE 300  
OMAHA, NE 68138  
402.502.7131  
WWW.FYRAENGINEERING.COM

**OWNER:**

 LOWER PLATTE NORTH NRD  
511 COMMERCIAL PARK ROAD  
WAHOO, NE 68066



12702 Westport Parkway, Ste 300  
Omaha, Nebraska 68138  
402.502.7131  
[www.fyraengineering.com](http://www.fyraengineering.com)

FUSE PLUG LEVEE REPAIR  
NATIONAL GUARD CAMP  
ASHLAND, NEBRASKA  
2019

ENGINEER'S SEAL

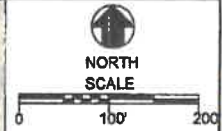
**REVISIONS**

NO.	DATE

DESIGNED BY: MCR  
DRAWN BY: EBR  
DATE: 02/18/2019  
PROJECT NO.: 022-18-03  
DATE: 02/18/2019

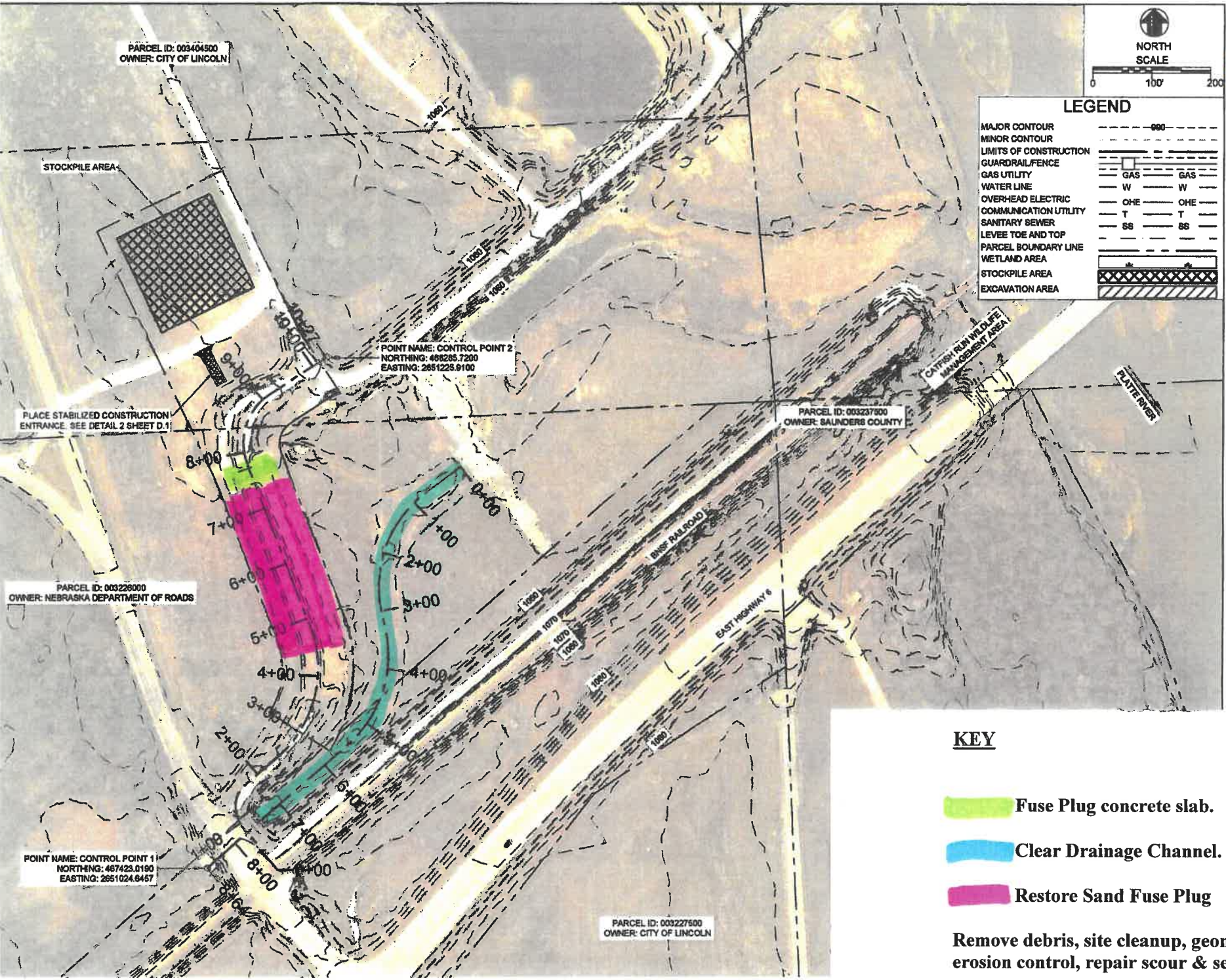
**TITLE**  
COVER SHEET,  
GENERAL NOTES, AND QUANTITIES

SHEET  
**A.1**



**LEGEND**

MAJOR CONTOUR	---	000
MINOR CONTOUR	---	
LIMITS OF CONSTRUCTION	---	
GUARDRAIL/FENCE	---	
GAS UTILITY	GAS	GAS
WATER LINE	W	W
OVERHEAD ELECTRIC	OHE	OHE
COMMUNICATION UTILITY	T	T
SANITARY SEWER	SS	SS
LEVEE TOE AND TOP	---	
PARCEL BOUNDARY LINE	---	
WETLAND AREA	---	
STOCKPILE AREA	---	
EXCAVATION AREA	---	



FUSE PLUG LEVEE REPAIR  
NATIONAL GUARD CAMP  
ASHLAND, NEBRASKA  
2019

ENGINEER'S SEAL

- KEY**
- Fuse Plug concrete slab.
  - Clear Drainage Channel.
  - Restore Sand Fuse Plug
  - Remove debris, site cleanup, geomembrane, erosion control, repair scour & seeding.



**FYRA Engineering, LLC**  
 12702 Westport Parkway, Suite 300  
 Omaha, NE 68138  
 Phone: 402.502.7131  
 Fax: 402.932.6940

**INVOICE FOR SERVICES**

**Lower Platte North NRD**  
**Bob Heimann**  
**511 Commercial Park Road**  
**Wahoo, NE 68066**

**COPY**

**DATE:** 30 December 2019  
**PROJECT NO.:** 022-19-03  
**PERIOD COVERED:** 26 Oct 2019 Through 20 Dec 2019  
**INVOICE NO.:** 022-038  
**FED ID:** 45-5611118

**Project Name:** Camp Ashland Fuse Plug Repair  
**Contract Amount:** \$21,720.00  
**Contract Date:** 20 September 2019

**Task 1 - Project Management**

<u>Description</u>	<u>Employee</u>	<u>Billing Rate</u>	<u>Hours</u>	<u>Current Due</u>
Principal	Sotak, Mike	\$ 202.00	6.00 \$	1,212.00
Engineer	Rogers, Lindy	\$ 170.00	0.50 \$	85.00
Admin	Stratton, Ann	\$ 70.00	1.00 \$	70.00
<b>Task 1 - Project Management</b>				<b>\$ 1,367.00</b>

**Task 4 - Construction Observation**

<u>Description</u>	<u>Employee</u>	<u>Billing Rate</u>	<u>Hours</u>	<u>Current Due</u>
Principal	Sotak, Mike	\$ 202.00	12.00 \$	2,424.00
Engineer	Rogers, Lindy	\$ 170.00	0.50 \$	85.00
Engineer Intern	Suing, Eric	\$ 100.00	70.50 \$	7,050.00
Expenses		\$ -	- \$	236.08
<b>Task 4 - Construction Observation</b>				<b>\$ 9,795.08</b>

**TOTAL DUE CURRENT INVOICE: \$ 11,162.08**

**CONTRACT AMOUNT:** \$ 21,720.00  
**PREVIOUS BILLING:** \$ 1,809.25  
**CURRENT INVOICE:** \$ 11,162.08  
**TOTAL INV'D. TO DATE:** \$ 12,971.33  
**CONTRACT REMAINING:** \$ 8,748.67

**Make all checks payable to:**  
 FYRA Engineering, LLC  
 12702 Westport Parkway, Suite 300  
 Omaha, NE 68138

Clark Construction Company Inc

17770 250th Street  
Ashland, NE 68003-3699

# Invoice

Date	Invoice #
12/10/2019	1439

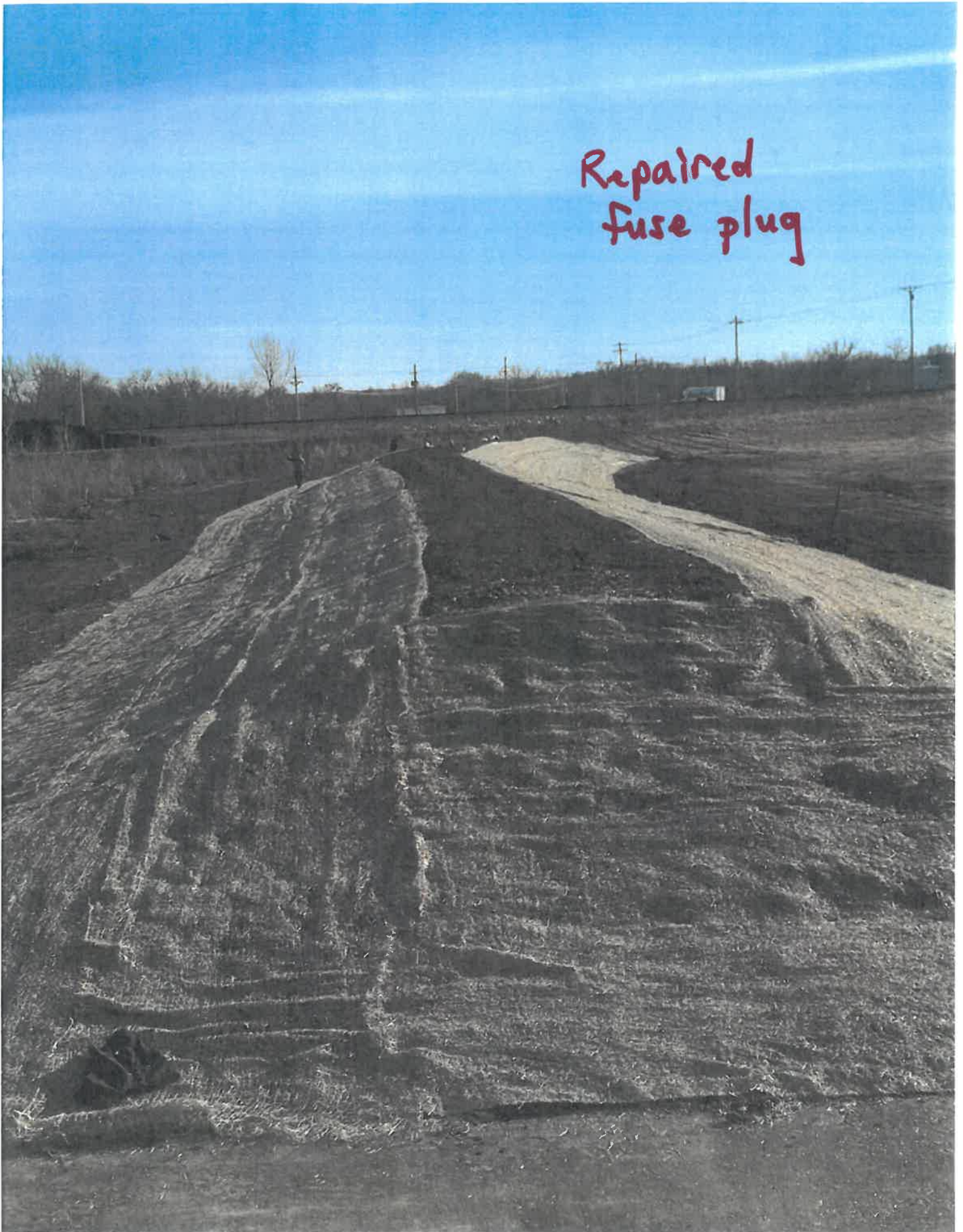
<b>Bill To</b>
Lower Platte North NRD 511 Commerical Park Rd. Wahoo NE 68066

**COPY**

P.O. No.	Terms	Project
	Net 30	

Description	Qty	Rate	U/M	Amount	
Moving equipment to site	1	4,000.00	hr	4,000.00	
Site cleanup and debris removal	1	9,000.00		9,000.00	
Repair of clay platform	54	152.94		8,258.76	
Non- Cohesive fill for fuse plug repair	2,148	17.05		36,623.40	
HDPE Geomembranc	1,645	12.47416		20,520.00	
Topsoil	414	27.56		11,409.84	
Stabilized Construction entrance		0.00		0.00	
Silt fence	1	0.00	LF	0.00	
Erosion control blanket	2,200	1.75		3,850.00	
Seeding	4	2,000.00		8,000.00	
Guarding gate	25	100.00		2,500.00	
Date rec'd <u>12-10-19</u> Approved by <u>BH</u> Date approved <u>BH 12/11/19</u> Expense acc't _____ Funding source _____ % (amount) _____ Income acct _____					
If not paid within 30 days, a service charge of 1.50% will be added to the balance due.				<b>Total</b>	\$104,162.00
				<b>Payments/Credits</b>	\$0.00
				<b>Balance Due</b>	\$104,162.00

Repaired  
fuse plug



**FY 2020 - Measurable Goals or Outcomes**  
**12-Month Review (June 30, 2020)**

As directed in the LPSNRD 2019 Master Plan, a list of measurable goals or outcomes was identified for each standing and ad hoc subcommittee. In preparation for the following year's LRIP, these identified goals or outcomes should be rated on progress being made. It's important to note that these goals or outcomes are guidance for the staff, subcommittees and Board, and do not represent all of the possible goals or outcomes, nor does it indicate any error or false information on behalf of the staff, subcommittees and Board if they are not achieved.

Platte River

*Lower Platte River Corridor Alliance*

- Hold one tour of Platte River (for Alliance Reps and/or LPSNRD and PMRNRD) – **Nothing planned but have discussed it with PMRNRD**

**FY 2021 - Measurable Goals or Outcomes**

Platte River

*Lower Platte River Corridor Alliance*

- Hold one tour of Platte River (for Alliance Reps and/or LPSNRD and PMRNRD)