

2022

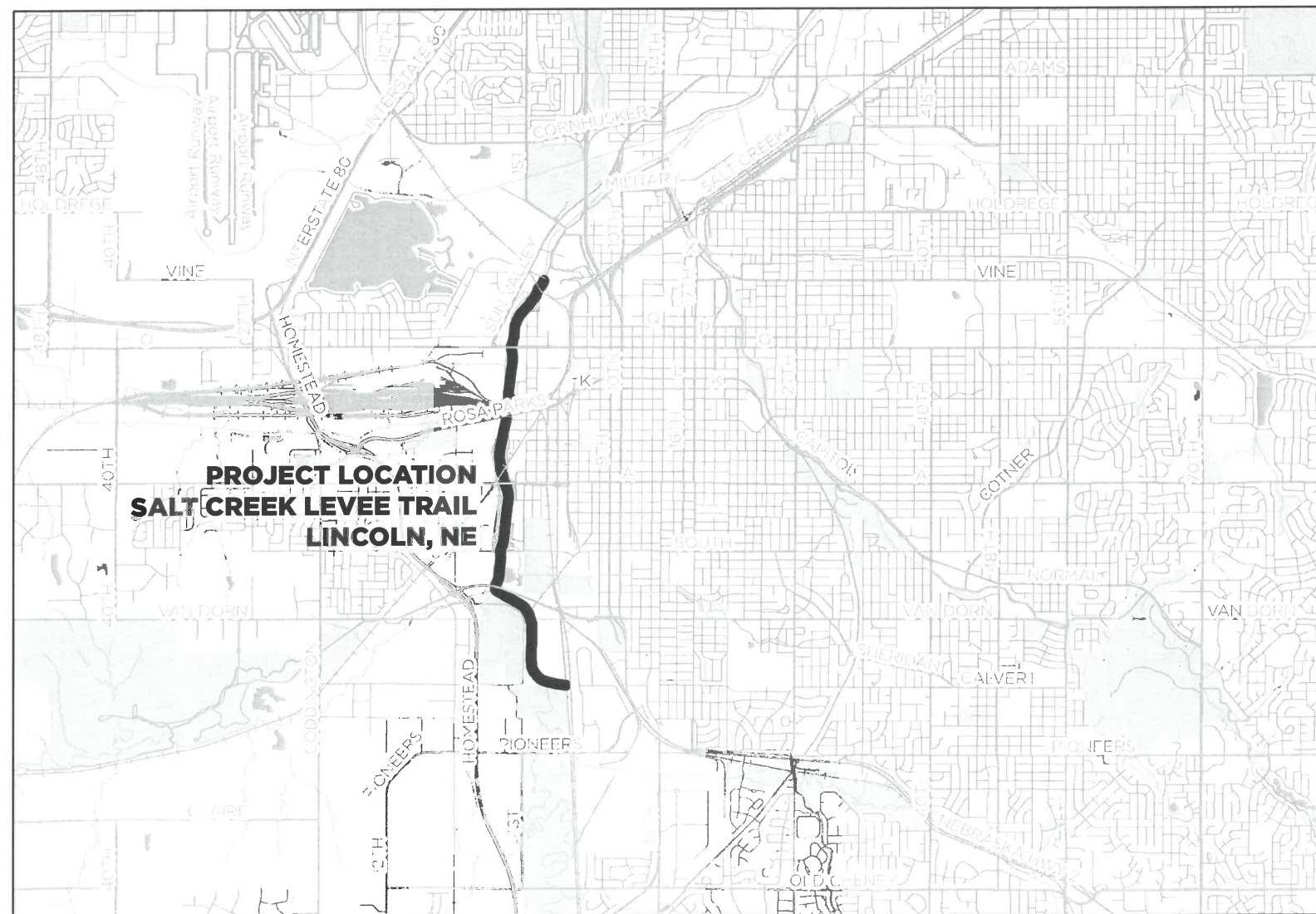
SALT CREEK LEVEE TRAIL RESURFACING

LOWER PLATTE SOUTH NRD

LINCOLN, NEBRASKA

PROJECT OFFICIALS:

MARK LIDEMANN
AL LANGDALE
ARIANA KENNEDY
ROBERT BARTJA



VICINITY MAP

INDEX OF SHEETS

SHEET 1: COVER

SHEET 2: LOCATION
MAP, CONSTRUCTION
NOTES,
QUANTITIES

SHEET 3: TYPICAL
DETAIL

LOWER PLATTE SOUTH
natural resources district



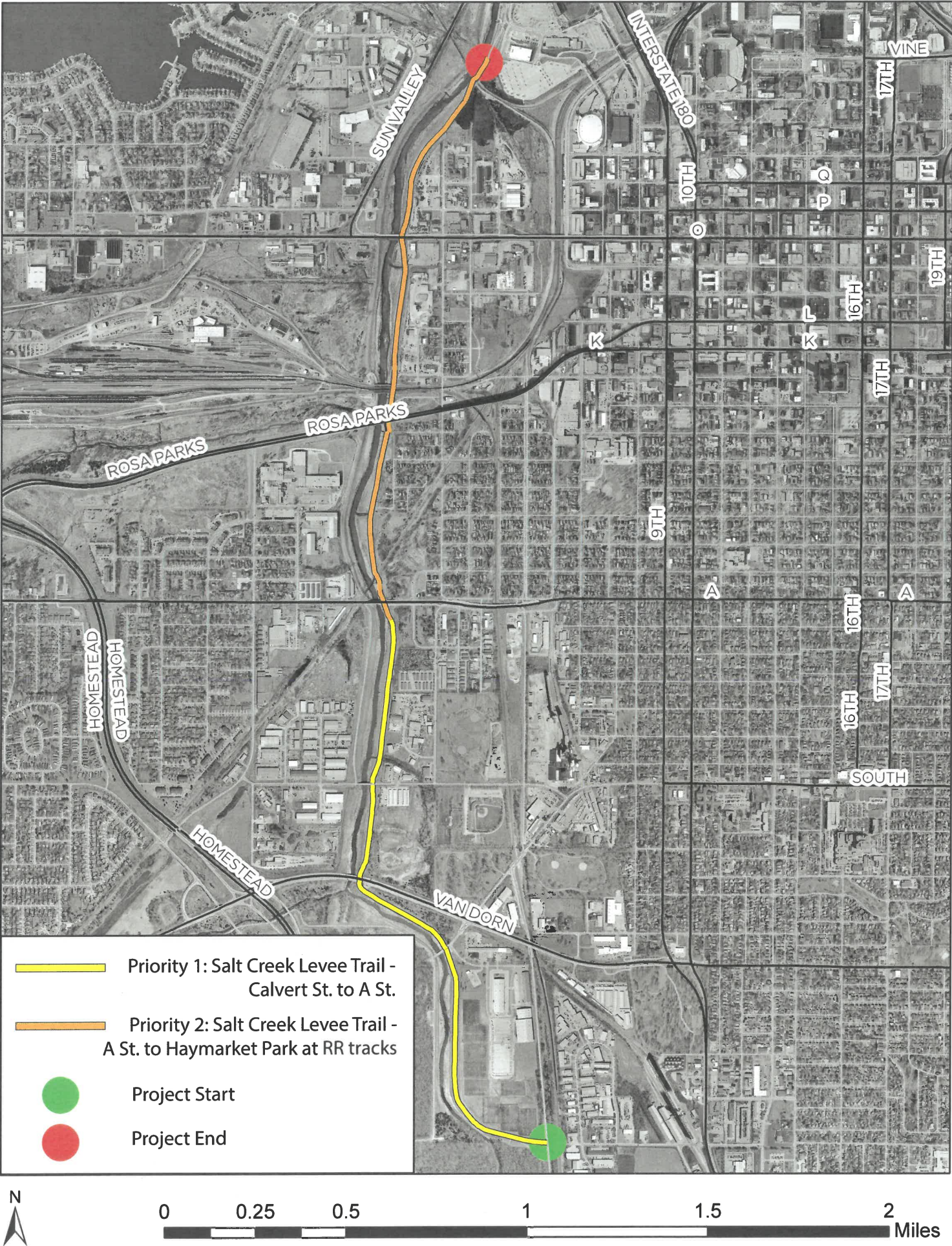
Lincoln Parks
& Recreation

2022
SALT CREEK LEVEE TRAIL RESURFACING
LOWER PLATTE SOUTH NRD
LINCOLN, NEBRASKA

COVER SHEET



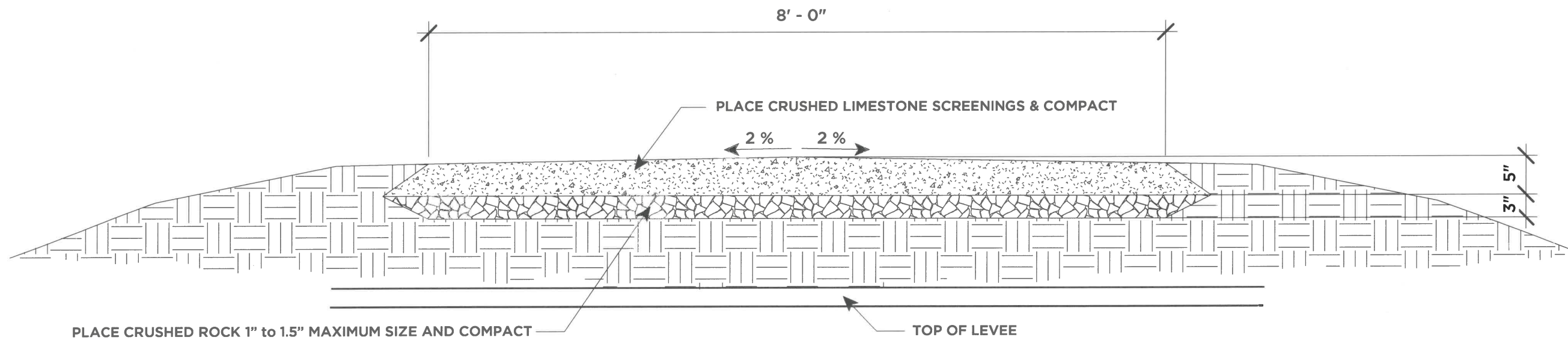
SHEET 1



CONSTRUCTION NOTES:

1. THE ITEMS IDENTIFIED IN THE SCHEDULE OF APPROXIMATE QUANTITIES ARE INTENDED TO IDENTIFY THE MAJOR WORK ITEMS. ALL ITEMS NOTE SPECIFICALLY MENTIONED SHALL BE CONSIDERED SUBSIDIARY TO BID ITEMS TO WHICH THEY ARE RELATED AND WILL NOT BE CONSIDERED PAY ITEMS.
2. CONTRACTOR SHALL PROVIDE BARRICADES WITH 'SIDEWALK CLOSED' SIGNS AT EACH TRAIL ENTRANCE. THESE SHALL BE MAINTAINED THROUGHOUT THE PROJECT.
3. AGGREGATES USED SHALL MEET REQUIREMENTS AS STATED IN THE PLANS.
4. UPON COMPLETION OF SPREADING OPERATIONS, THE AGGREGATES SHALL BE THOROUGHLY COMPACTED. THE COMPACTION MAY BE TESTED IN ACCORDANCE WITH ASTM D 1556 OR ASTM D 2167 BY OWNER. COMPACTION SHALL BE DONE IN LIFTS NO THICKER THAN 5".
5. NO CRUSHED CONCRETE ALLOWED FOR SURFACING.

FOR INFORMATION ONLY			
SCHEDULE OF APPROXIMATE QUANTITIES			
LOCATION	LENGTH (FT)	CRUSHED ROCK (CY)	LIMESTONE SCREENINGS (CY)
Calvert to Van Dorn	5445	404	673
Van Dorn to South Street	1425	105	176
South Street to A Street	2595	192	320
A Street to Rosa Parks	2105	156	260
Rosa Parks to O Street	1465	109	181
O Street to Haymarket Park	2085	155	258



TYPICAL RESURFACING SECTION

NOTE: EXISTING TRAIL VERTICAL ALIGNMENT SHALL REMAIN THE SAME

