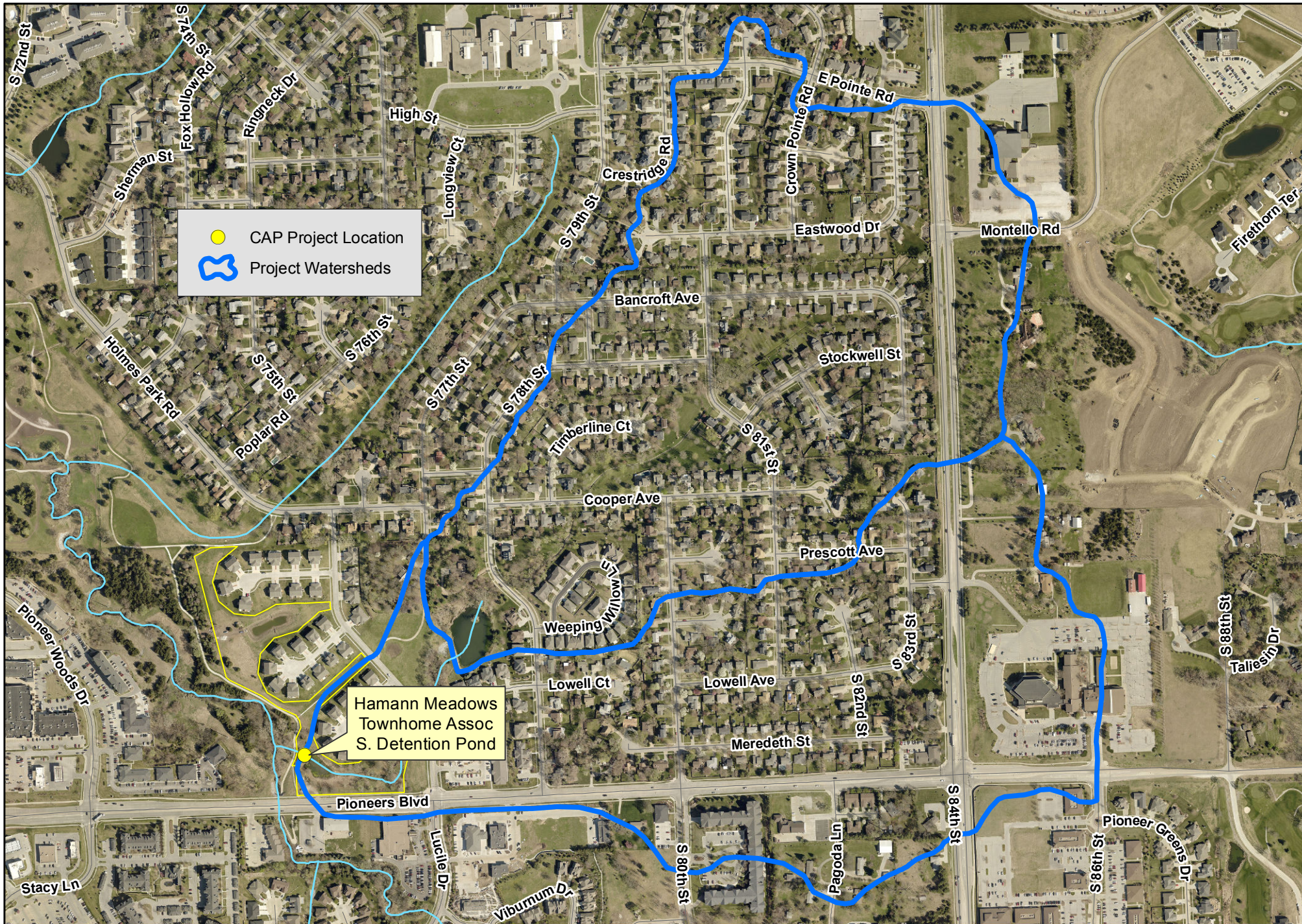




Community Assistance Request - Hamman Meadows Townhome Assoc.

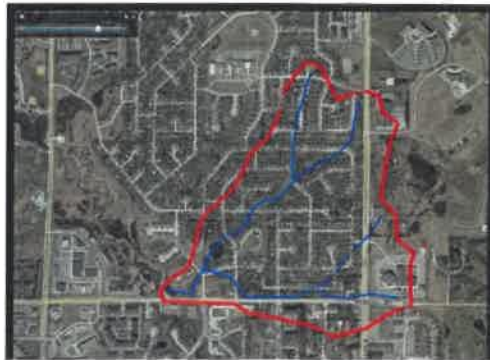


Hamann Meadow's South Detention Pond and Dam Reconstruction

Hamann Meadows is located north of Pioneers Blvd., south of Holmes Lake Road, east of Antelope Creek and west of South 76th Street in Lincoln. At the southwest corner of the HAMANN MEADOWS TOWNHOMES ASSOCIATION property is a detention pond, as designated on the City of Lincoln. The pond is intended to be a sediment trap for Holmes Lake. This detention pond receives water from the east and north as designated by the red border (picture 1).



Picture 2 Hamann Meadows south detention pond



Picture 1

The riser, vertical tube and the dam are located at the west end of the pond. Currently the dam also acts as an access road to the west side of the Hamann Meadows Townhome Association properties.

These overlapping pictures are of the dam, facing south, on the access road, towards Pioneers Blvd. There are numerous trees growing on both sides of the dam.



Picture 3 East side of dam



Picture 4 West side dam

To use the pond as intended, as the City requires, it should maintain a designated level of water. The pond does not detain water as the corrugated pipes in the “dam” have failed. The water from the pond flows freely through the dam due to the erosion around the pipe. It has created an outlet around the



Picture 5 Erosion and failure of

pipe, through the dam into Antelope Creek. The water from the creek flows into Holmes Lake. This may contribute to the flooding of the bike path running parallel to the creek going under South 70th Street into Holmes Lake Park.

The free-flowing water erodes not only under the dam, but as depicted in picture 5, the face of the dam has eroded significantly.

The other area of concern we are addressing is the number of large trees and the root system that is on and in the dam as a contributing factor to the erosion problems. The root system is visible in the eroded area in picture 5. The debris from the trees collect in the riser. If the riser would be functioning, it would be inhibited by the debris.

The outlet from the pond was extended by the City of Lincoln when they developed the bike path that goes over the outlet. A portion of this project involves City property.

The Board of Directors for Hamann Meadows Townhomes Association is initiating the South Retention Pond and Dam Reconstruction Project. This project will be in several phases. To prepare for this project, we have consulted with the following people:

Ben Higgins – City of Lincoln Public Works-

JJ Yost- City of Lincoln Public Works

Mike Placke -Olsson Associates (engineer)

Kyle Hauschild- Natural Resource District

City of Lincoln Parks and Recreation Department

The project is intended to move the overflow to the south of the dam to protect the homes located on the north side of the pond. The plat indicates the overflow is directly over the middle of the dam, however; when it has flooded the natural overflow is to the north of the dam. Water levels were within 5-10’ of the houses located on the north side the pond. Again, in late summer of this year, the water levels approached within 5-10’ of the houses back doors.

The repair of the dam and removal of the trees will allow for continued safe access of pedestrians and vehicles to the west side of the properties without concern for continuing erosion due to the declining health of the trees and free flow of water.

Step II

- Submit to NRD for cost sharing and approval
- Contact Construction Companies for bids on project (City list)
- Environmental Assessment
 - Corp of Engineers
- Special Meeting of HAMANN MEADOWS TOWNHOMES ASSOCIATION
 - Vote on financing repair of pond

Step III

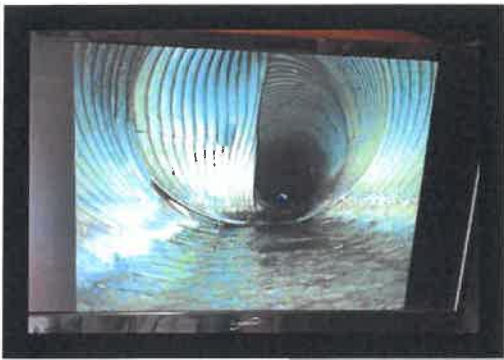
- Reconstruction/Repairs
 - Specifics of this phase will be determined once engineering design is finalized with additional information.
 - Approval from the City (Watershed)
 - Determine if repair of dam or repair for pass through channel



3'-4' into entrance via Antelope Creek 1



3'-4' into entrance via Antelope Creek floor out outlet. Hole in floor.



Picture 7 Collapse of outlet



Picture 6 Band separated



Picture 9 Floor of outlet



Picture 8 20'-23' in from outlet, unable to continue





Lancaster County/City of Lincoln GIS Map South detention pond

Printed: Jun 19, 2018

DISCLAIMER: The information is presented on a best-efforts basis, and should not be relied upon for making financial, survey, legal or other commitments. If you have questions or comments regarding the data displayed on this map, please email ags@lincoln.ne.gov and you will be directed to the appropriate department.