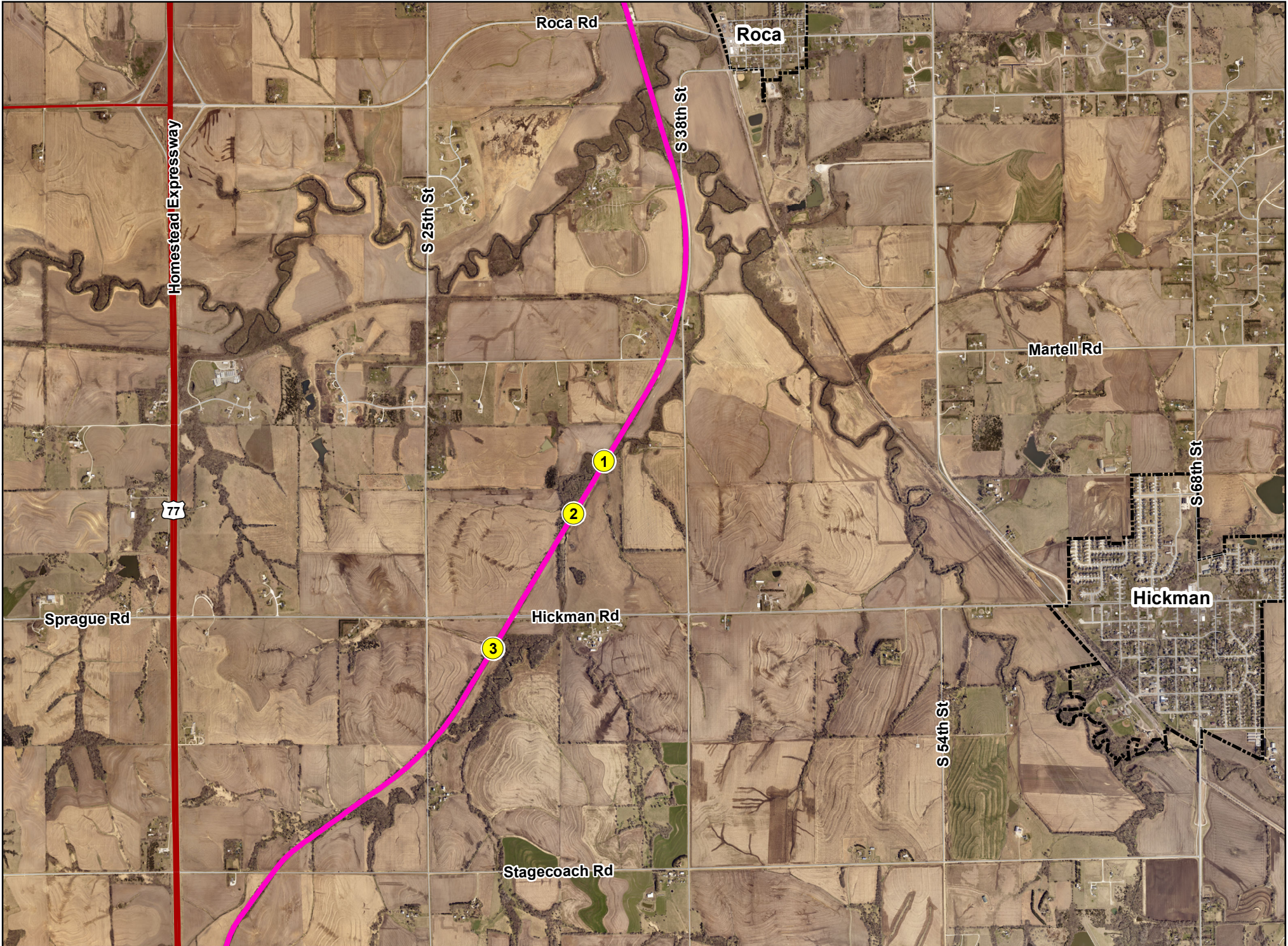


# Homestead Trail, Lancaster County - Repair Locations



# MoPac East Trail, Cass County - Repair Locations



NW

N

NE

E

300

330

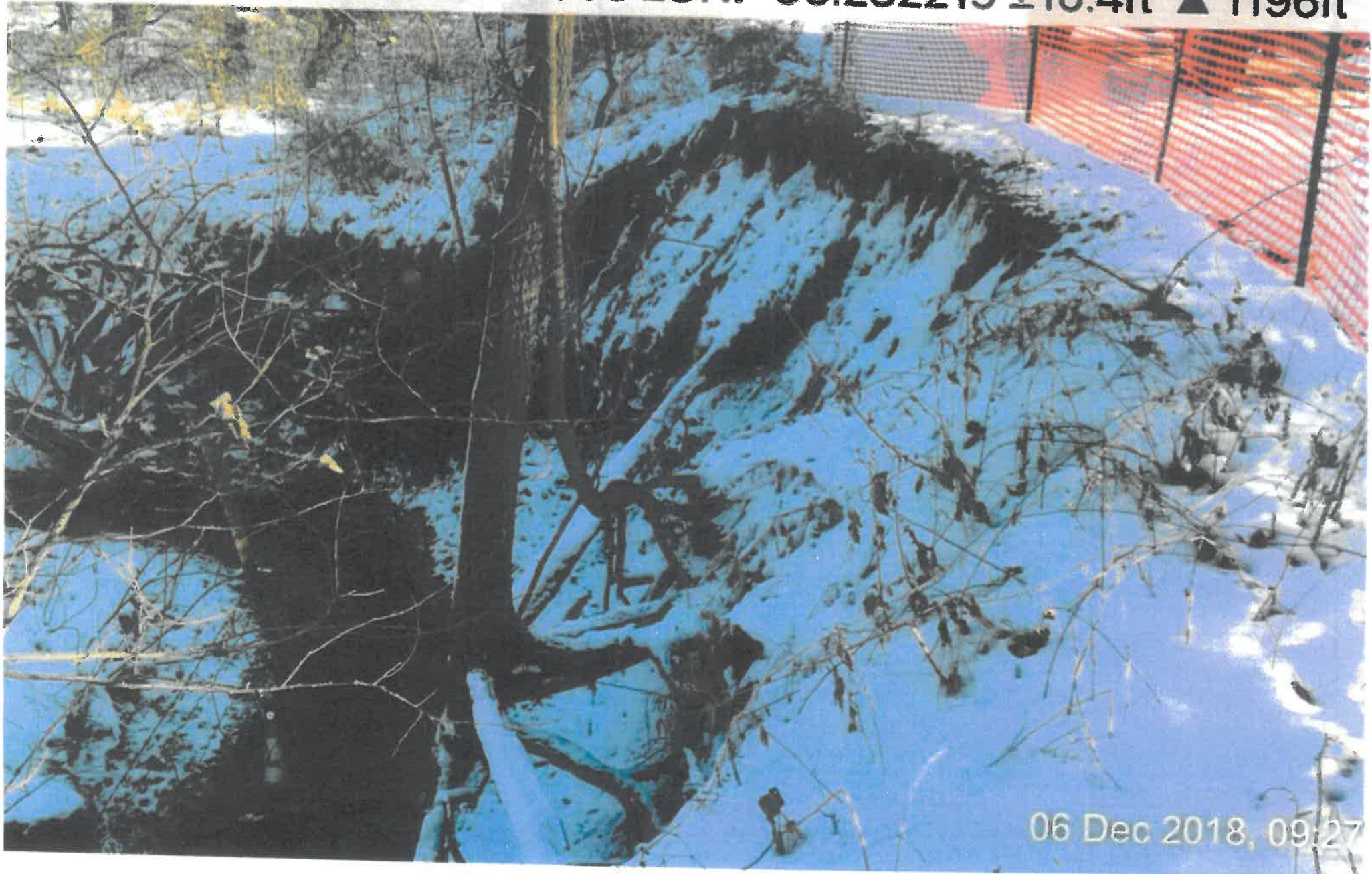
0

30

60

90

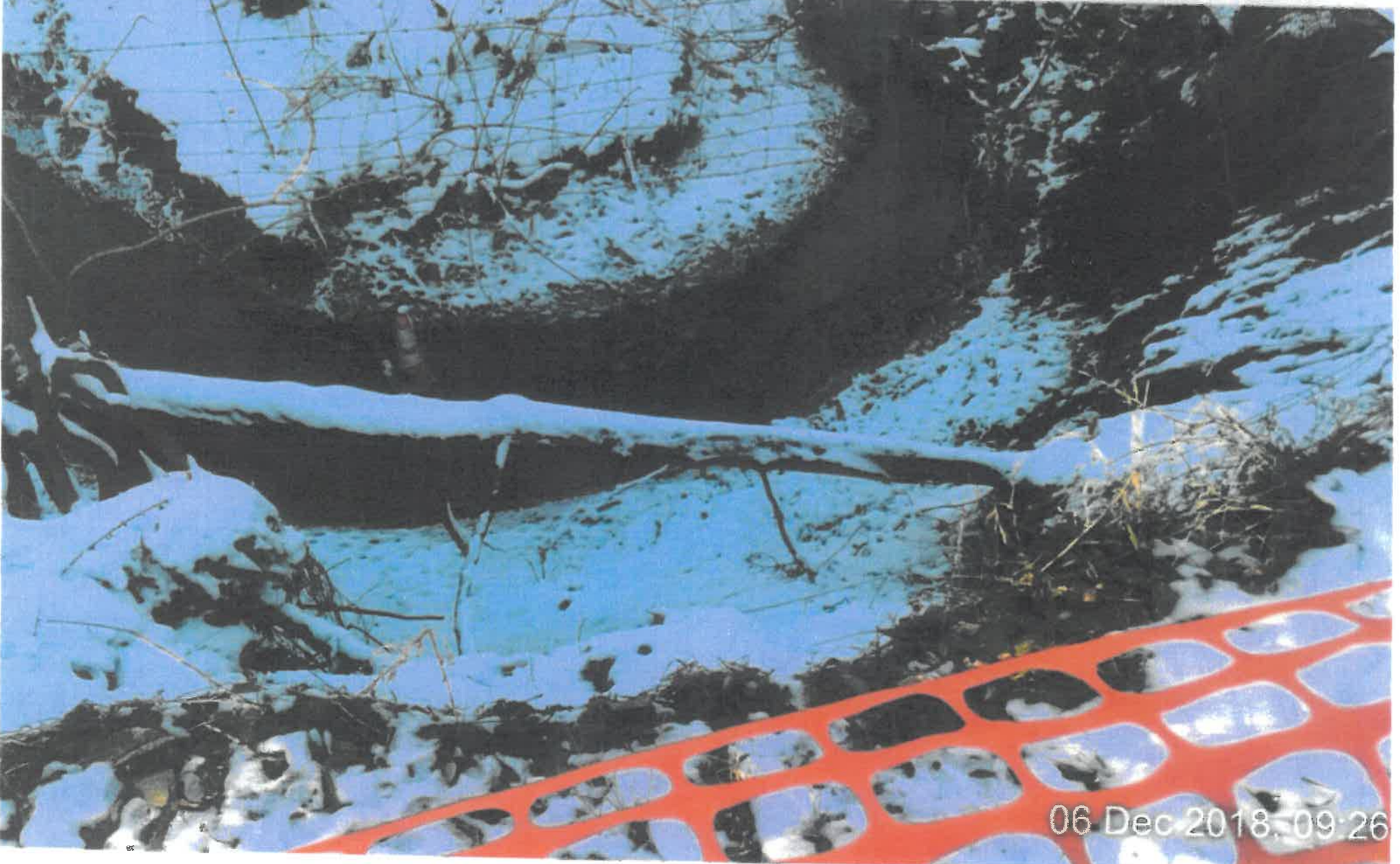
📍 28°NE (T) LAT: 40.856903 LON: -96.282219 ±16.4ft ▲ 1196ft



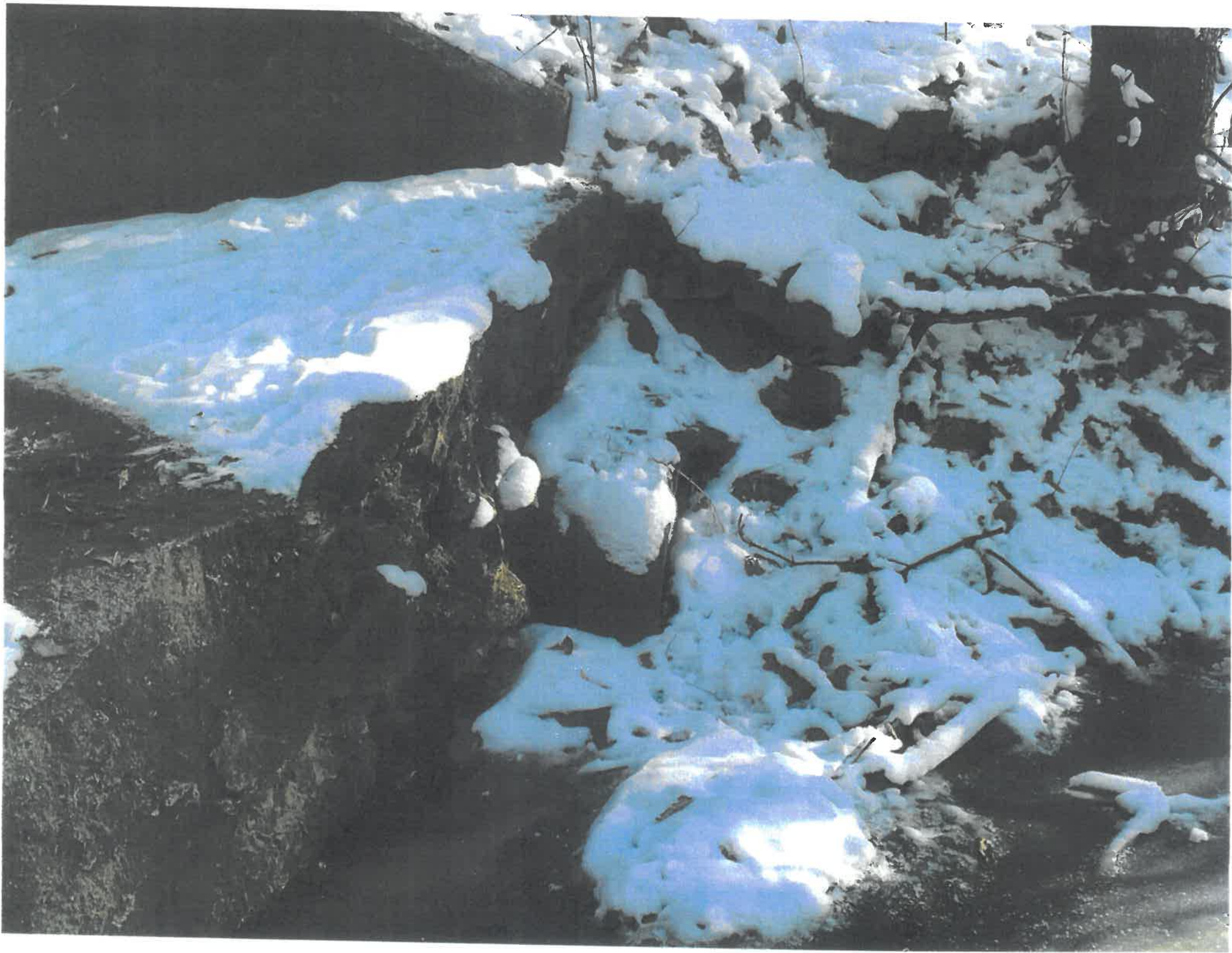
06 Dec 2018, 09:27



📍 309°NW (T) LAT: 40.856926 LON: -96.282173 ±16.4ft ▲ 1198ft







S

180

SW

210

240

W

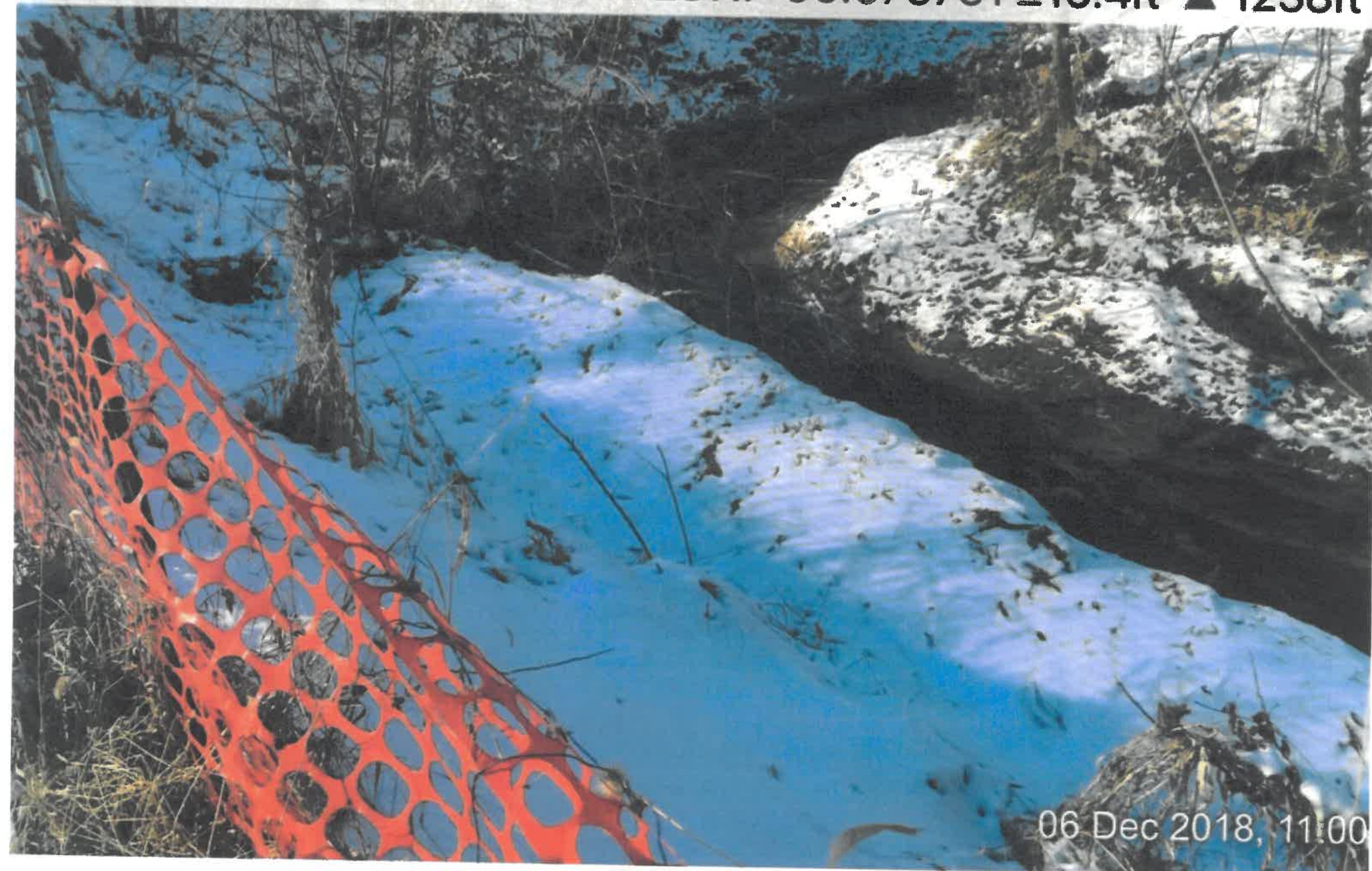
270

NW

300

330

☉ 262°W (T) LAT: 40.630604 LON: -96.675751 ±16.4ft ▲ 1238ft



06 Dec 2018, 11:00

W

270

NW

300

330

N

0

NE

30

60

☉ 9°N (T) LAT: 40.630524 LON: -96.675827 ±16.4ft ▲ 1244ft



06 Dec 2018, 10:59



