

ADVERTISEMENT

Sealed Bids will be received by the Lower Platte South Natural Resources District, P.O. Box 83581, Lincoln, Nebraska, 68501-3581, for the following project at the time listed:

BID DATE AND TIME: February 2nd, 2025 @ 2:00 PM CST

PROJECT: Stabilization Project

SITE: Middle Creek

LOCATION: Lincoln, Lancaster County

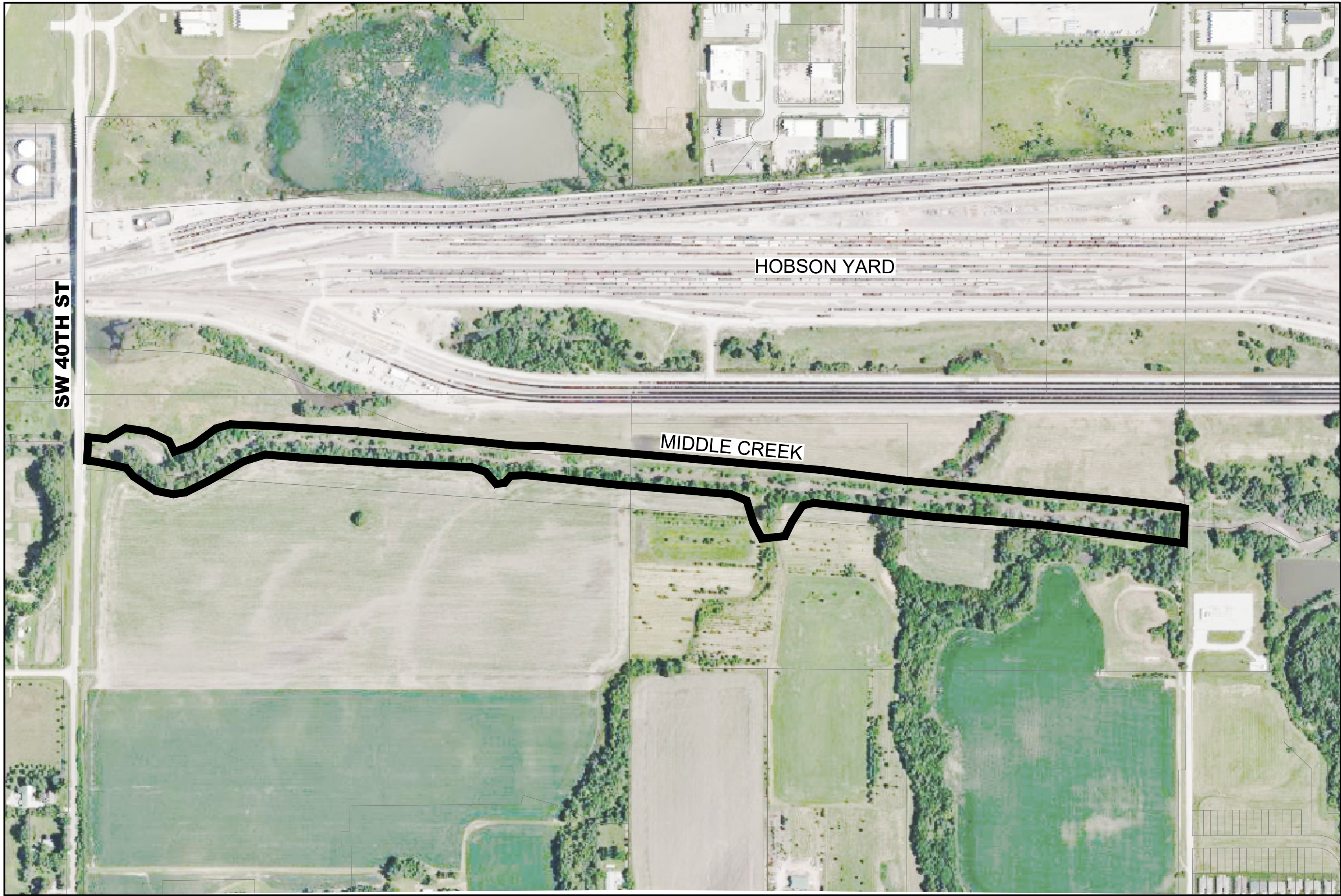
Bids will be publicly opened, read aloud, and tabulated at the office of the Lower Platte South Natural Resources District, 3125 Portia Street, Lincoln, Nebraska at the time specified. If auxiliary aids or reasonable accommodations are needed for attendance at the bid opening, please call Craig Matulka 402-476-2729. Advance notice of seven days is needed when requesting an interpreter.

Plans, Specifications and Bid Documents may be obtained from the Lower Platte South NRD website at www.lpsnrd.org or at the office of the Lower Platte South NRD, Lincoln, Nebraska, and will be issued by the Lower Platte South NRD, 3125 Portia Street, P.O. Box 83581, Lincoln, NE 68501-3581, there is no charge for the Plans and Specifications. Interested parties may also contact Justin Cermak, The Flatwater Group, at 402-435-5441.

The Lower Platte South Natural Resources District reserves the right to accept or reject any or all Bids and to waive any or all informalities or irregularities.

BY: DAVID POTTER – General Manager

LOWER PLATTE SOUTH NRD
MIDDLE CREEK STABILIZATION PROJECT



AERIAL MAP

PROJECT CONTACT

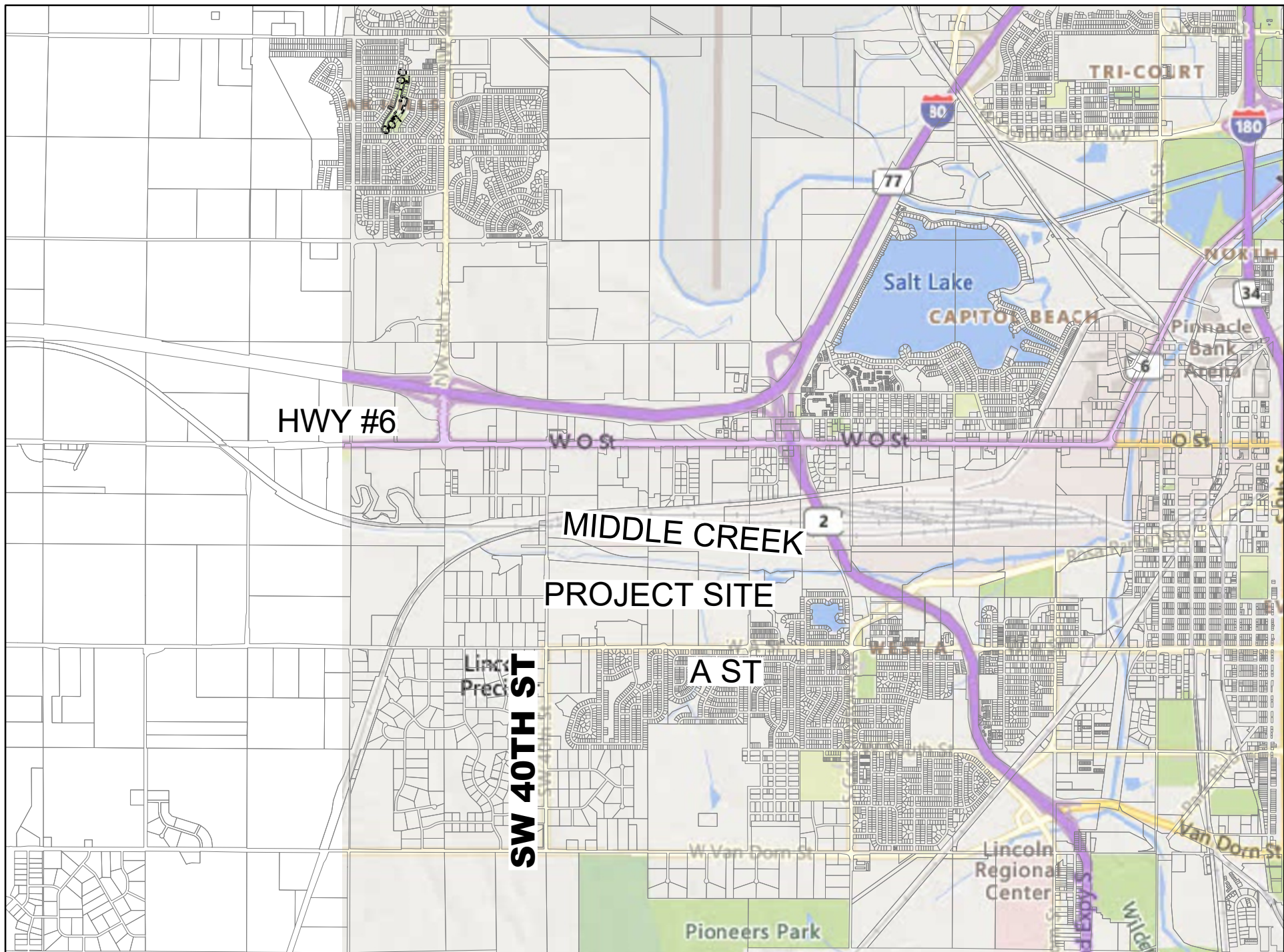
LOWER PLATTE SOUTH NRD:
3125 PORTIA STREET
LINCOLN, NE 68521
ATTN: CRAIG MATULKA....(402) 476-2729

THE FLATWATER GROUP, INC.:
8200 CODY DRIVE, SUITE A
LINCOLN, NE 68512
ATTN: JUSTIN CERMAK....(402) 435-5441

PRIOR TO CONSTRUCTION:

CALL : 811 FOR LOCATION OF UNDERGROUND
TELEPHONE, FIBER, ELECTRIC, GAS MAINS, CABLE AND
CITY OF LINCOLN UTILITIES.



EXISTING UNDERGROUND AND OVERHEAD UTILITIES AND
STRUCTURES HAVE BEEN PLOTTED FROM AVAILABLE
INFORMATION AND THEREFORE, THEIR LOCATIONS MUST
BE CONSIDERED APPROXIMATE ONLY. IT IS THE
RESPONSIBILITY OF THE INDIVIDUAL CONTRACTORS TO
EXACTLY LOCATE AND PROTECT EACH EXISTING UTILITY
BEFORE AND DURING ACTUAL CONSTRUCTION.

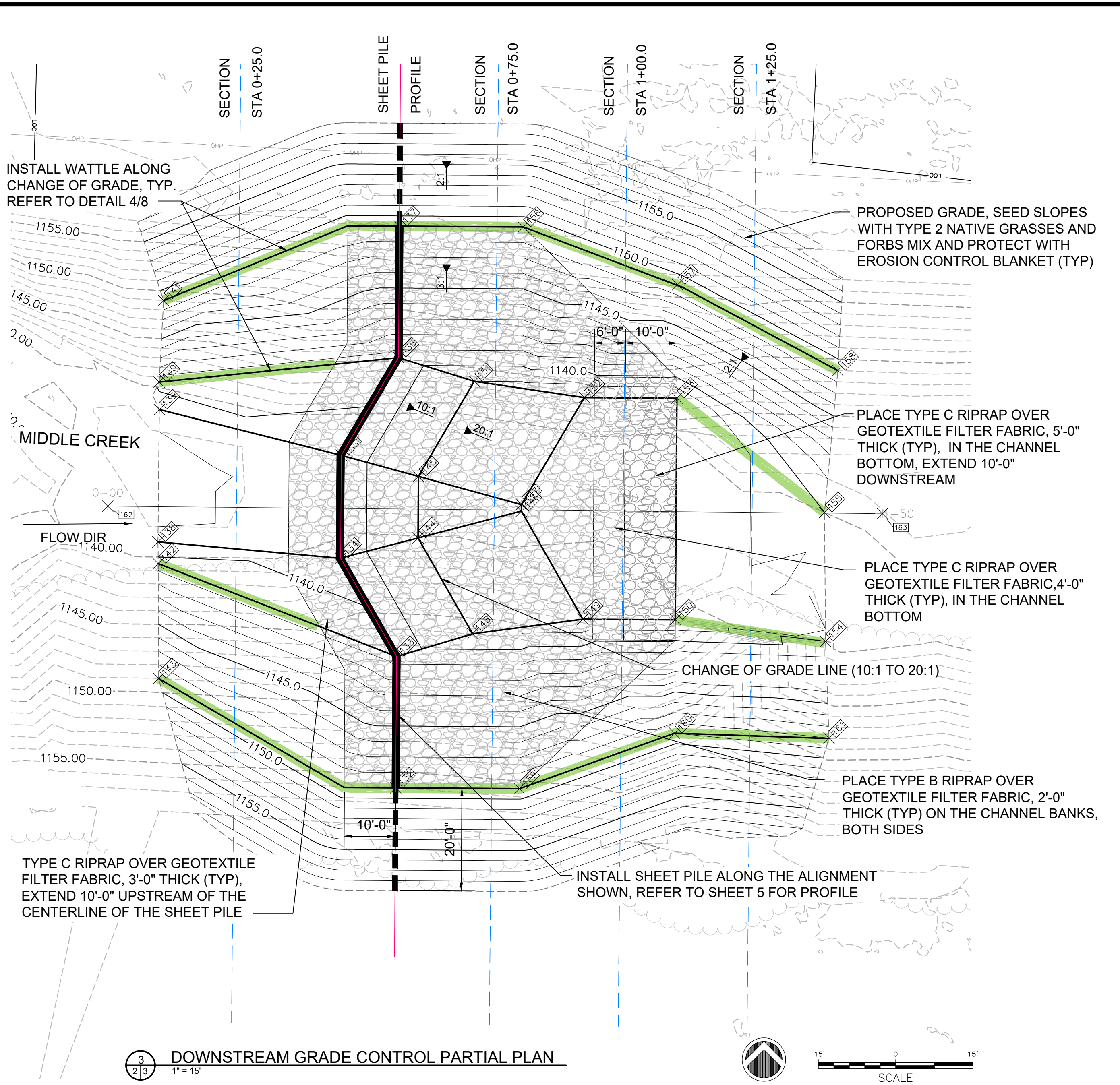
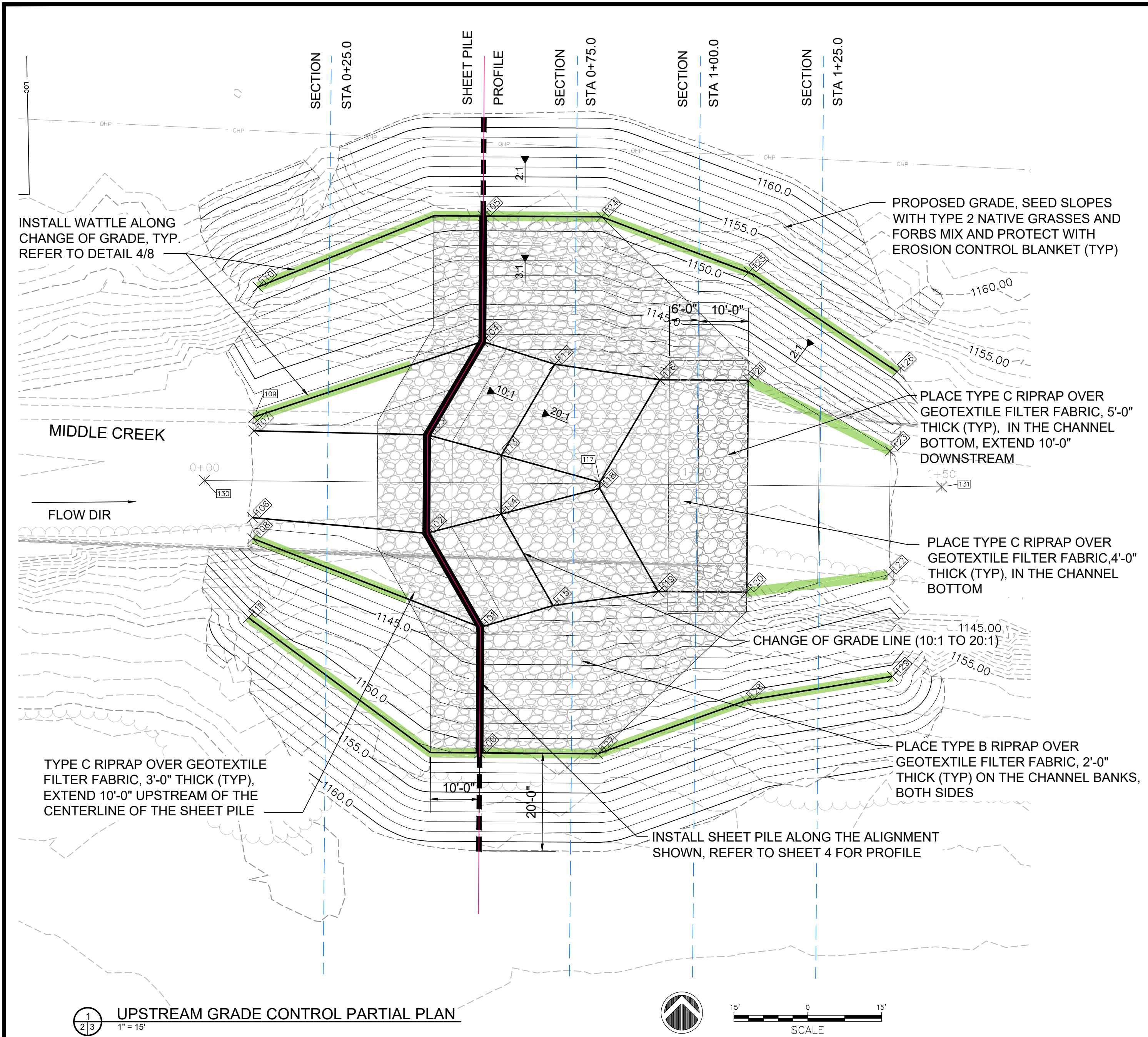


VICINITY MAP - CITY OF LINCOLN

INDEX OF SHEETS

- 1. COVER SHEET
- 2. SITE PLANS
- 3. PARTIAL PLANS
- 4. UPSTREAM GRADE CONTROL DETAILS
- 5. DOWNSTREAM GRADE CONTROL DETAILS
- 6. LOW WATER CROSSING PLAN AND DETAILS
- 7. EROSION CONTROL PLAN
- 8. EROSION CONTROL DETAILS

<div>LOWER PLATTE SOUTH NRD MIDDLE CREEK STABILIZATION</div> <div>LINCOLN, LANCASTER COUNTY, NEBRASKA</div>		<div>COVER SHEET</div>		<div></div>		SEAL		REVISIONS	
<div></div> <div>The FLATWATER GROUP Inc. 8200 Cody Drive, Suite A Lincoln, NE 68512 402-435-5441 NE Certificate of Authorization CA1145</div>		DATE		23-DEC-2025		DESIGNED BY		JDC	
		DRAWN BY		JDC		CHECKED BY		RJK	
		PROJECT NUMBER		LPS-2025-01		SCALE		AS SHOWN	
		SHEET NUMBER		1					



Point Table				
Point #	Elevation	Northing	Easting	Description
100	1151.0	370813.6	2533489.5	SPW
101	1142.5	370839.1	2533489.7	SPW
102	1142.5	370858.1	2533478.8	SPW
103	1142.5	370878.1	2533479.0	SPW
104	1142.5	370897.1	2533490.1	SPW
105	1151.0	370922.6	2533490.2	SPW
106	1141.5	370861.3	2533443.4	FG
107	1141.5	370879.0	2533443.7	FG
108	1142.5	370857.1	2533443.5	FG
109	1142.5	370881.7	2533443.6	FG
110	1151.0	370908.2	2533444.5	FG
111	1151.0	370841.0	2533442.5	FG
112	1141.0	370892.5	2533504.8	FG
113	1141.0	370874.0	2533493.9	FG
114	1141.0	370862.1	2533493.9	FG
115	1141.0	370843.5	2533504.4	FG

Point Table				
Point #	Elevation	Northing	Easting	Description
116	1140.0	370889.3	2533526.1	FG
117	1140.0	370868.5	2533513.9	FG
118	1140.0	370867.3	2533513.9	FG
119	1140.0	370846.3	2533525.8	FG
120	1140.0	370846.2	2533543.7	FG
121	1140.0	370889.2	2533544.0	FG
122	1142.0	370849.8	2533572.6	FG
123	1142.0	370874.9	2533572.9	FG
124	1151.0	370922.4	2533514.3	FG
125	1151.0	370911.2	2533544.2	FG
126	1151.0	370891.0	2533574.3	FG
127	1151.0	370813.4	2533513.5	FG
128	1151.0	370824.2	2533543.6	FG
129	1151.0	370829.1	2533573.3	FG
130	0.0	370868.9	2533433.6	ALIGN_W
131	0.0	370867.6	2533583.3	ALIGN_W

Point Table				
Point #	Elevation	Northing	Easting	Description
132	1149.0	370710.7	2535524.5	SPE
133	1140.5	370736.2	2535524.7	SPE
134	1140.5	370755.2	2535513.9	SPE
135	1140.5	370775.2	2535514.0	SPE
136	1140.5	370794.2	2535525.1	SPE
137	1149.0	370819.7	2535525.3	SPE
138	1139.2	370758.4	2535478.4	FG
139	1139.1	370784.1	2535478.7	FG
140	1140.5	370789.4	2535478.7	FG
141	1149.0	370805.2	2535479.5	FG
142	1140.5	370754.2	2535478.5	FG
143	1149.0	370731.9	2535478.6	FG
144	1139.0	370759.1	2535528.9	FG
145	1139.0	370771.1	2535529.0	FG
146	1138.0	370764.4	2535548.9	FG
147	1138.0	370765.6	2535548.9	FG

Point Table				
Point #	Elevation	Northing	Easting	Description
148	1139.0	370740.6	2535539.4	FG
149	1138.0	370743.4	2535560.8	FG
150	1138.0	370743.3	2535578.8	FG
151	1139.0	370789.6	2535539.8	FG
152	1138.0	370786.4	2535561.1	FG
153	1138.0	370786.3	2535579.1	FG
154	1140.0	370739.1	2535607.9	FG
155	1140.0	370764.1	2535607.7	FG
156	1149.0	370819.5	2535549.3	FG
157	1149.0	370808.3	2535579.2	FG
158	1149.0	370791.7	2535610.3	FG
159	1149.0	370710.5	2535548.6	FG
160	1139.0	370721.3	2535578.6	FG
161	1148.0	370720.3	2535608.6	FG
162	0.0	370765.3	2535468.7	ALIGN_E
163	0.0	370763.9	2535618.9	ALIGN_E

REVISIONS

NO.	DATE	BY	DESCRIPTION
1	10/03/25	TFG	CONCEPT DESIGN
2	12/05/25	TFG	90% DESIGN SUBMITTAL
3	12/23/25	TFG	FINAL DESIGN

SEAL

PROFESSIONAL CIVIL ENGINEER
JUSTIN D. CERMAK
E-14535
2/23/2025
STATE OF NEBRASKA

LOWER PLATTE SOUTH NRD
MIDDLE CREEK STABILIZATION
LINCOLN, LANCASTER COUNTY, NEBRASKA

PARTIAL PLANS

THE FLATWATER GROUP INC.

The FLATWATER GROUP Inc.
8200 Cody Drive, Suite A
Lincoln, NE 68512
402-435-5441
CA-1145

DATE
23-DEC-2025

DESIGNED BY
JC

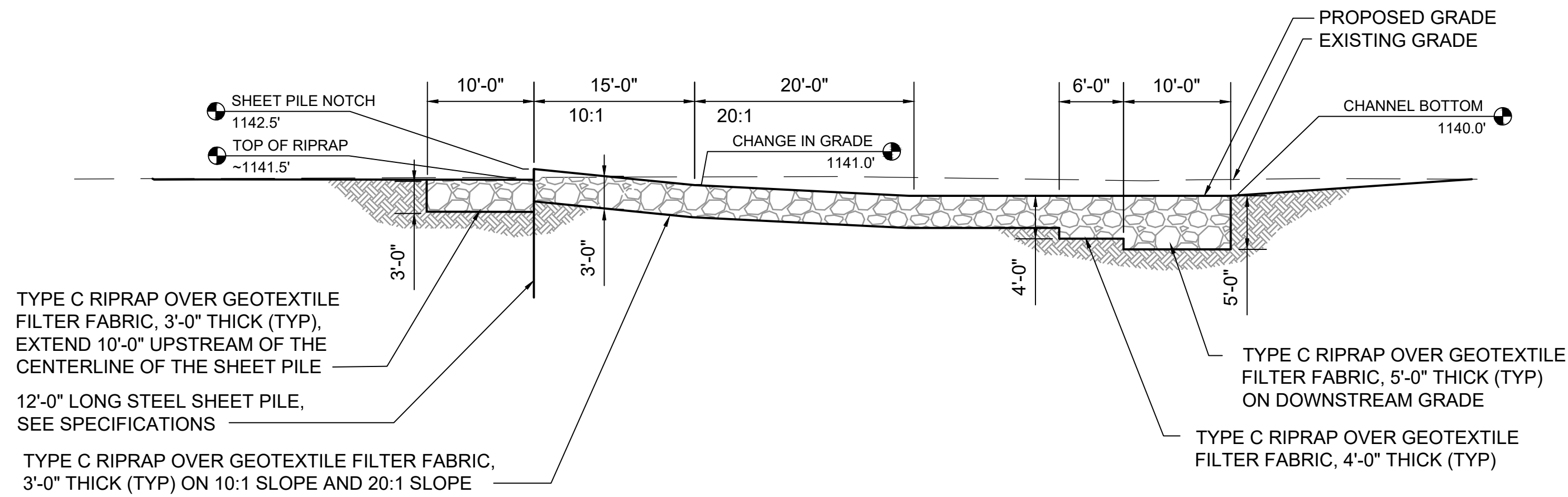
DRAWN BY
STAFF

CHECKED BY
RK

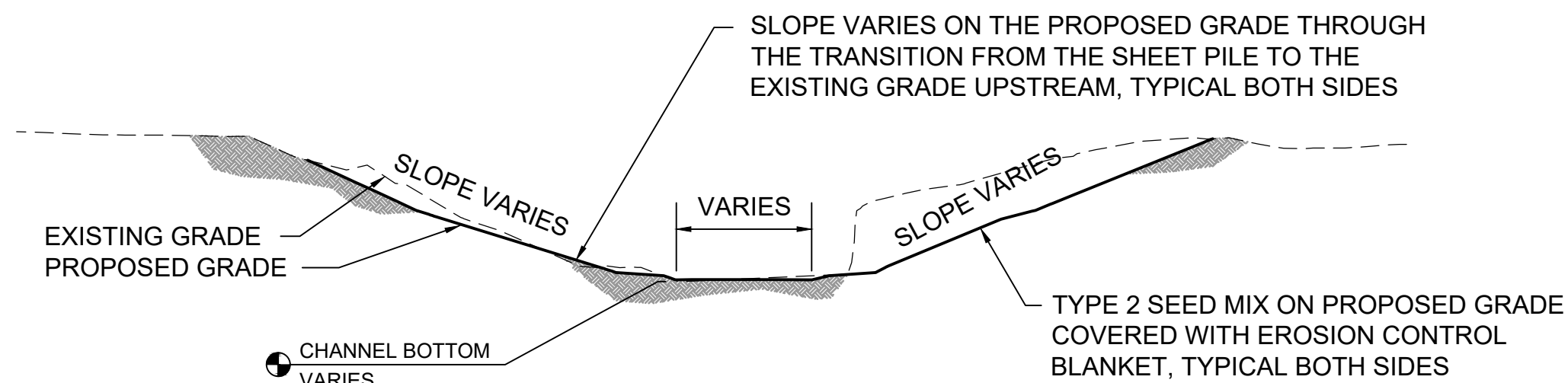
PROJECT NUMBER
LPS-2025-01

SCALE
AS sHOWN

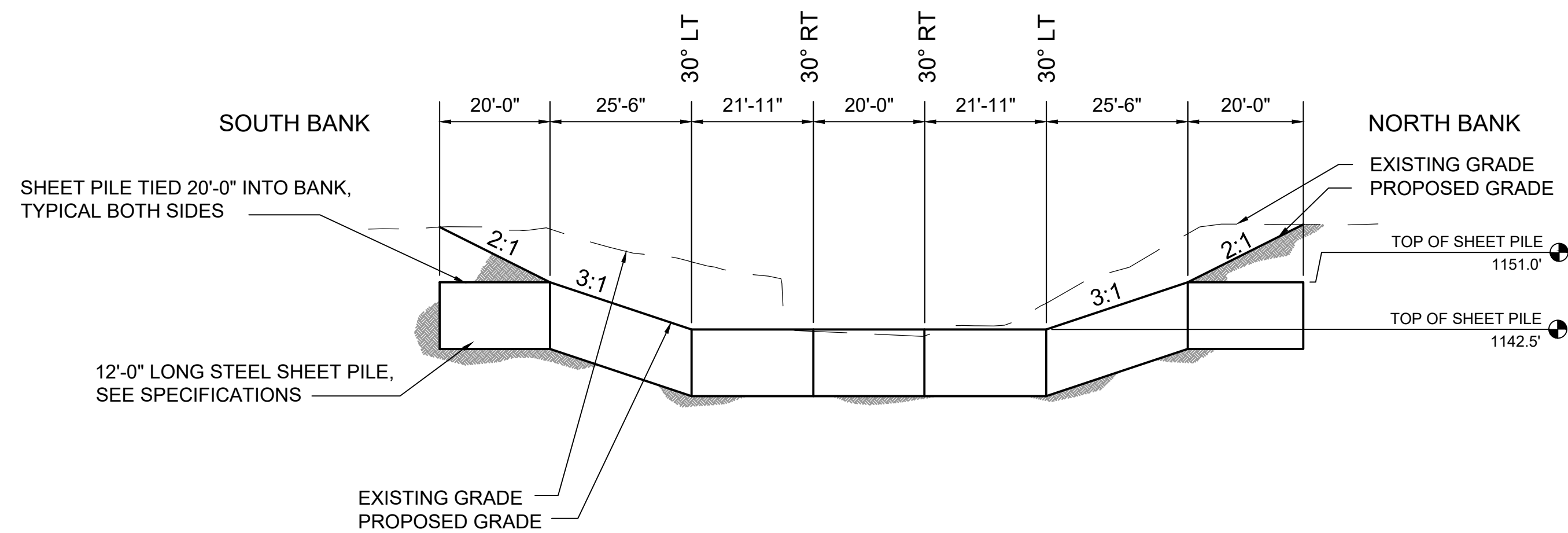
SHEET NUMBER
3



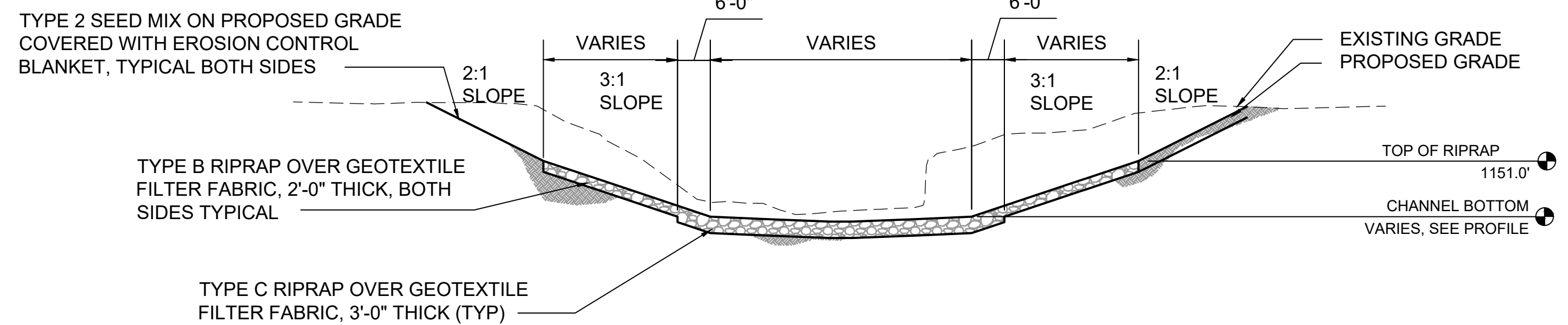
1
3/4 PROFILE OF UPSTREAM GRADE CONTROL
1" = 10'



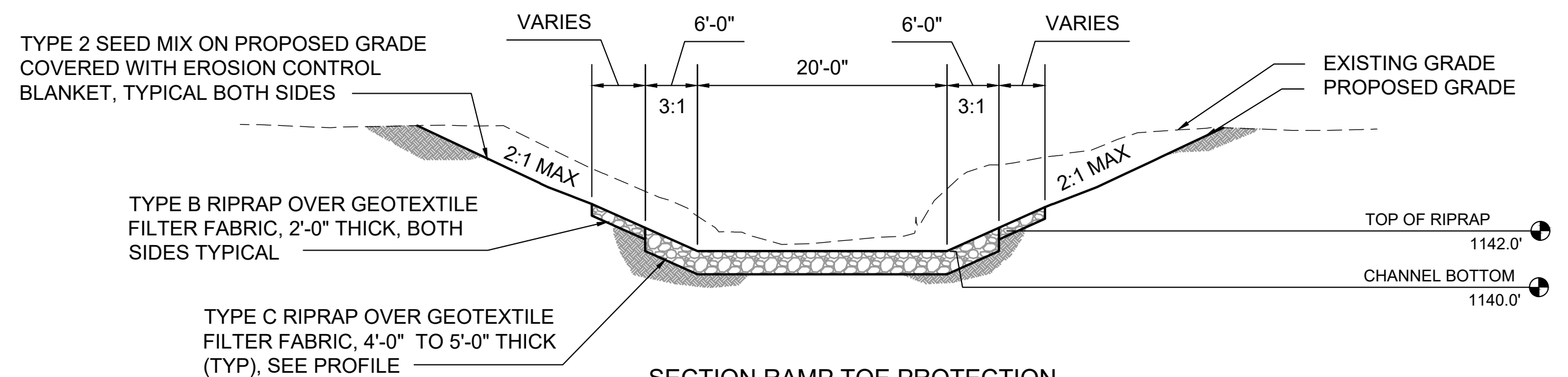
2
3/4 TYPICAL SECTION THROUGH UPSTREAM TRANSITION
STATION 0+10.0 TO 0+45.0
1" = 20'



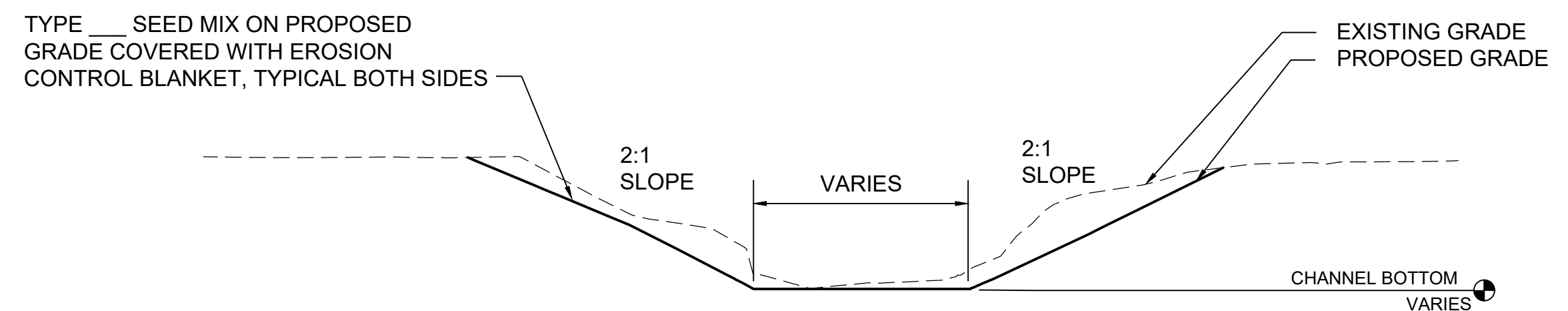
3
3/4 TYPICAL PROFILE OF SHEET PILE
1" = 20'



4
3/4 SECTION THROUGH RIPRAP RAMP
STATION 0+54.0 - STATION 0+94.0
1" = 20'



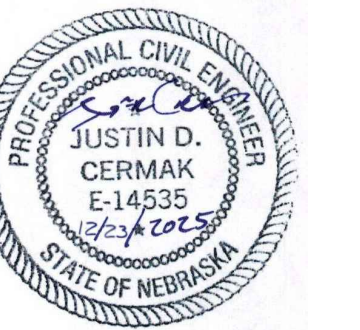
5
3/4 SECTION RAMP TOE PROTECTION
STATION 0+94.0 TO STATION 1+10.0
1" = 20'



6
3/4 TYPICAL SECTION THROUGH DOWNSTREAM TRANSITION
STATION 1+10.0 THROUGH 1+49.0
1" = 20'

REVISIONS

NO.	DATE	BY	DESCRIPTION
1	10/03/25	TFG	CONCEPT DESIGN
2	12/08/25	TFG	90% DESIGN SUBMITTAL
3	12/23/25	TFG	FINAL DESIGN



LOWER PLATTE SOUTH NRD
MIDDLE CREEK STABILIZATION
LINCOLN, LANCASTER COUNTY, NEBRASKA

UPSTREAM GRADE CONTROL DETAILS



The FLATWATER GROUP Inc.
8200 Cody Drive, Suite A
Lincoln, NE 68512
402-435-5441
CA-1145

DATE 23-DEC-2025

DESIGNED BY JC

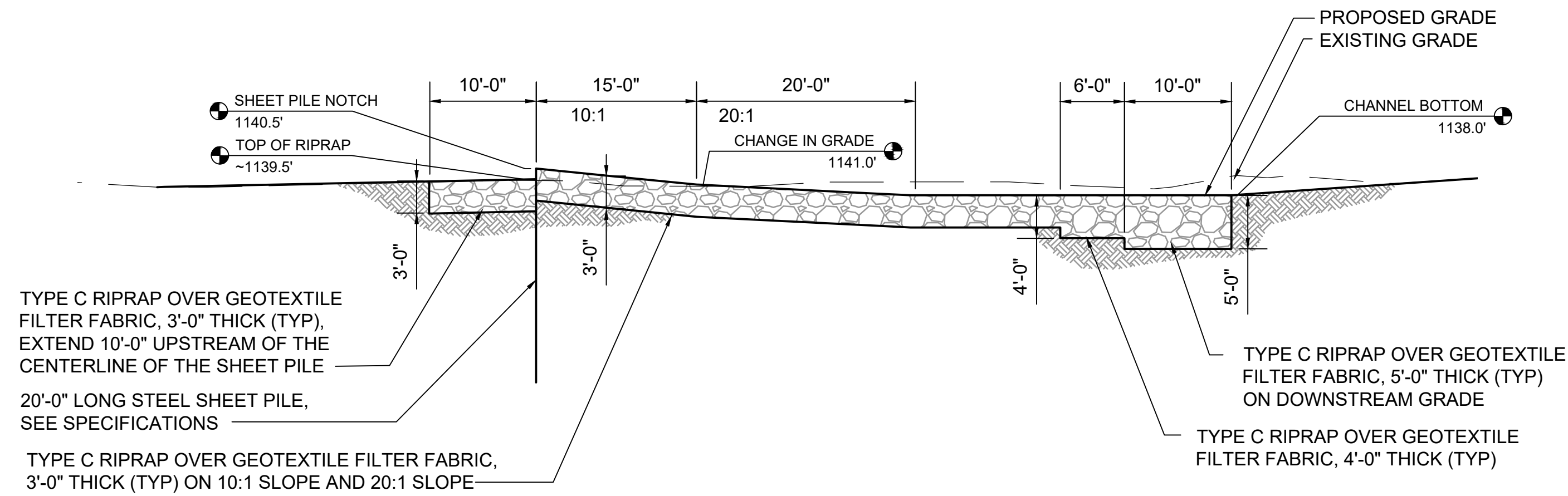
DRAWN BY STAFF

CHECKED BY RK

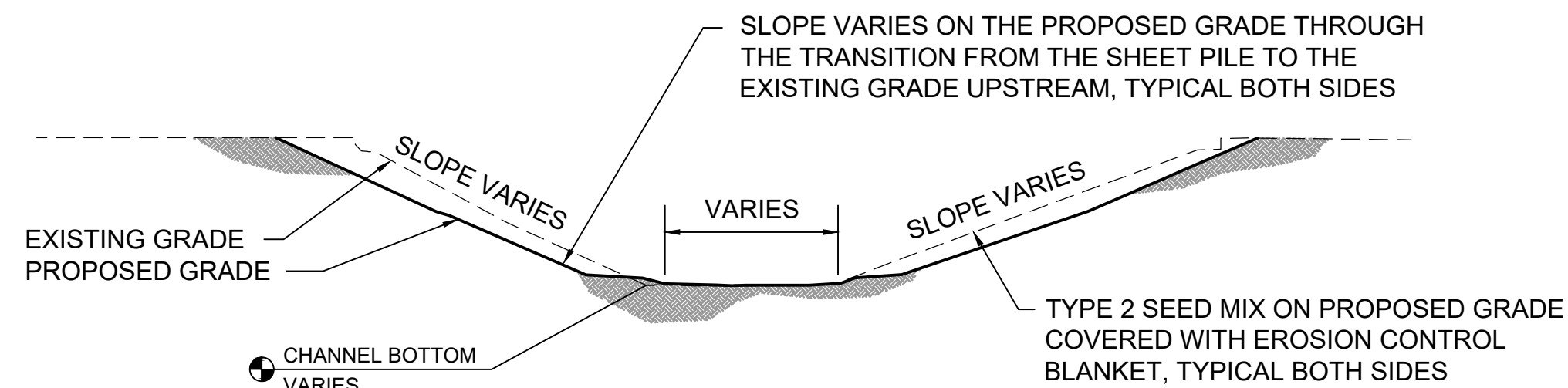
PROJECT NUMBER LPS-2025-01

SCALE AS SHOWN

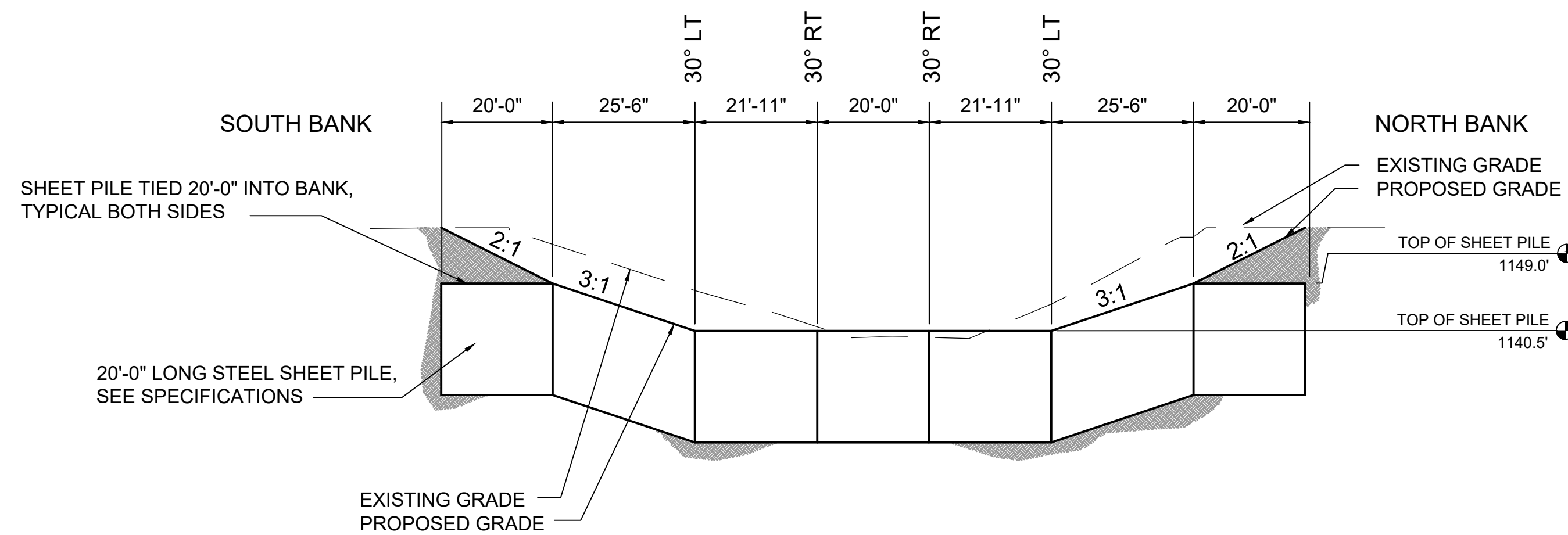
SHEET NUMBER



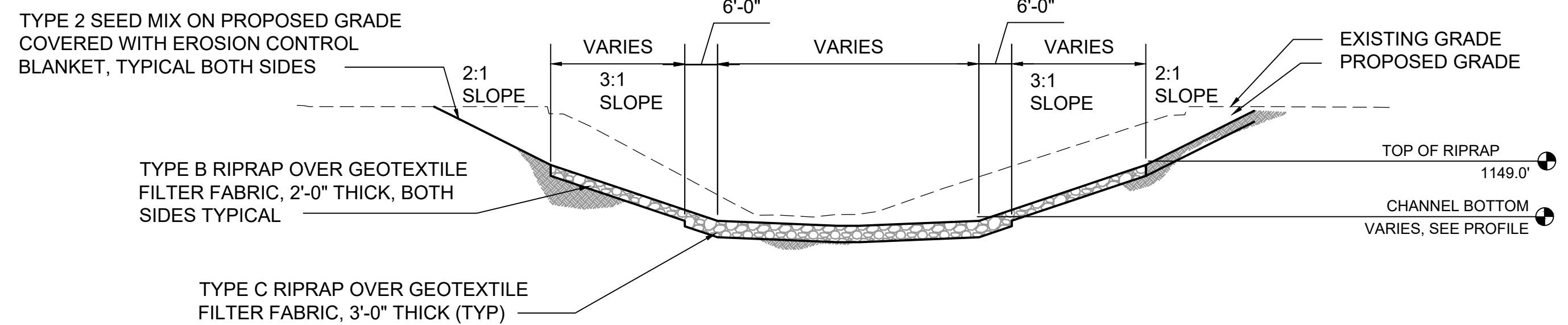
1
3/5 PROFILE OF DOWNSTREAM GRADE CONTROL
1" = 10'



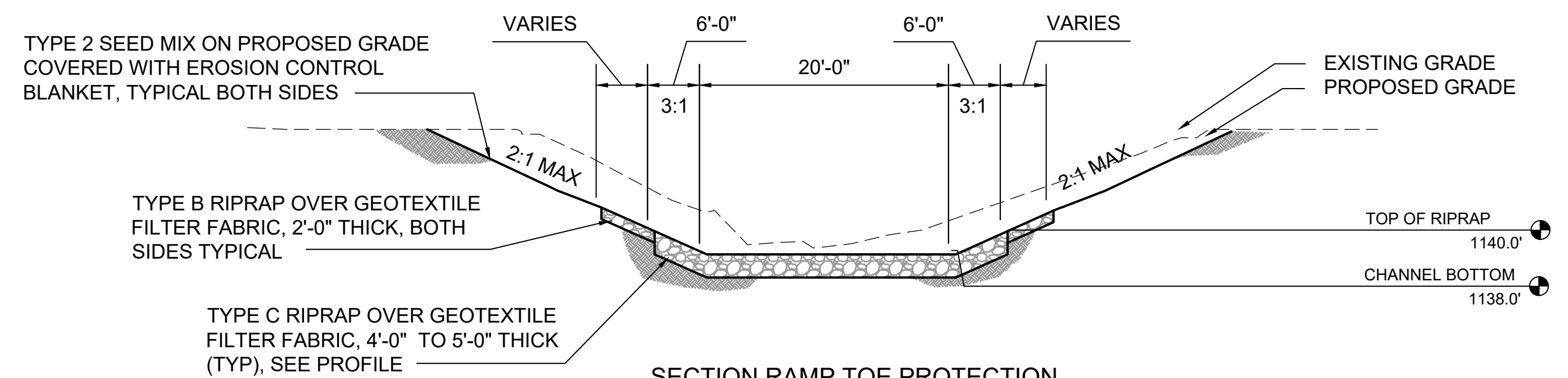
2
3/5 TYPICAL SECTION THROUGH UPSTREAM TRANSITION
STATION 0+10.0 TO 0+45.0
1" = 20'



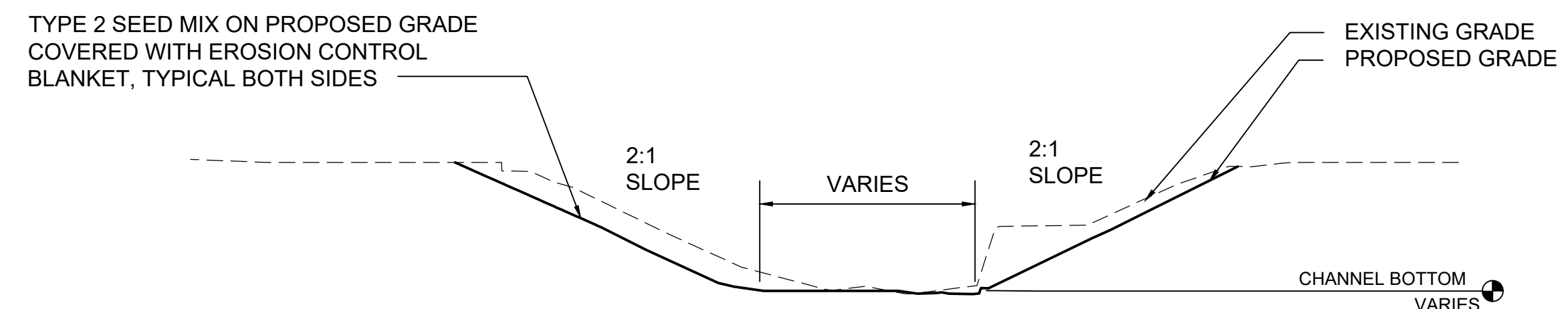
3
3/5 TYPICAL PROFILE OF SHEET PILE
1" = 20'



4
3/5 SECTION THROUGH RIPRAP RAMP
STATION 0+54.0 - STATION 0+94.0
1" = 20'



5
3/5 SECTION RAMP TOE PROTECTION
STATION 0+94.0 TO STATION 1+10.0
1" = 20'



6
3/5 TYPICAL SECTION THROUGH DOWNSTREAM TRANSITION
STATION 1+10.0 THROUGH 1+49.0
1" = 20'

REVISIONS

NO.	DATE	BY	DESCRIPTION
1	10/03/25	TFG	CONCEPT DESIGN
2	12/03/25	TFG	90% DESIGN SUBMITTAL
3	12/23/25	TFG	FINAL DESIGN



LOWER PLATTE SOUTH NRD
MIDDLE CREEK STABILIZATION
LINCOLN, LANCASTER COUNTY, NEBRASKA

DOWNSTREAM GRADE CONTROL DETAILS



The FLATWATER GROUP Inc.
8200 Cody Drive, Suite A
Lincoln, NE 68512
402-435-5441
CA-1145

DATE 23-DEC-2025

DESIGNED BY JC

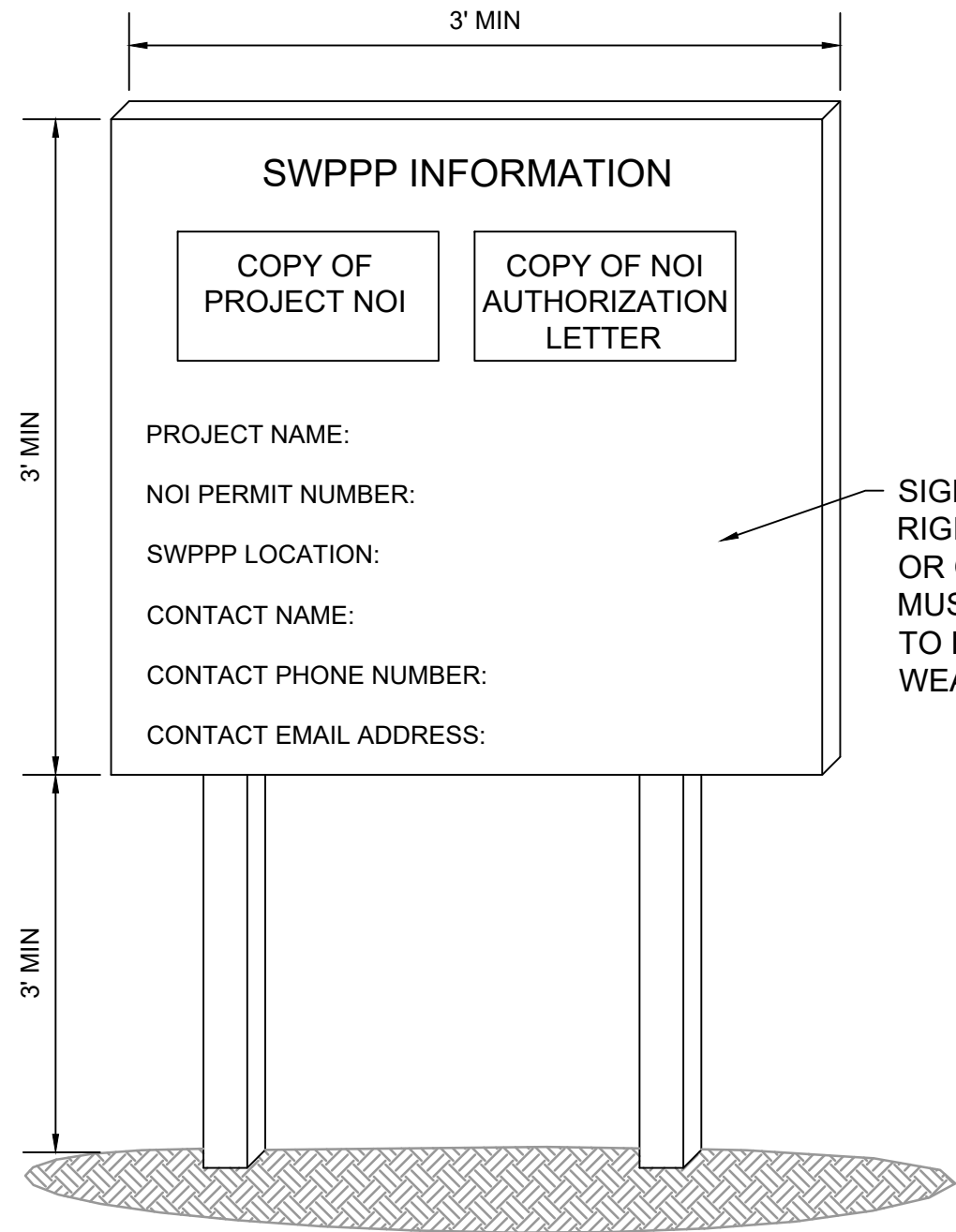
DRAWN BY STAFF

CHECKED BY RK

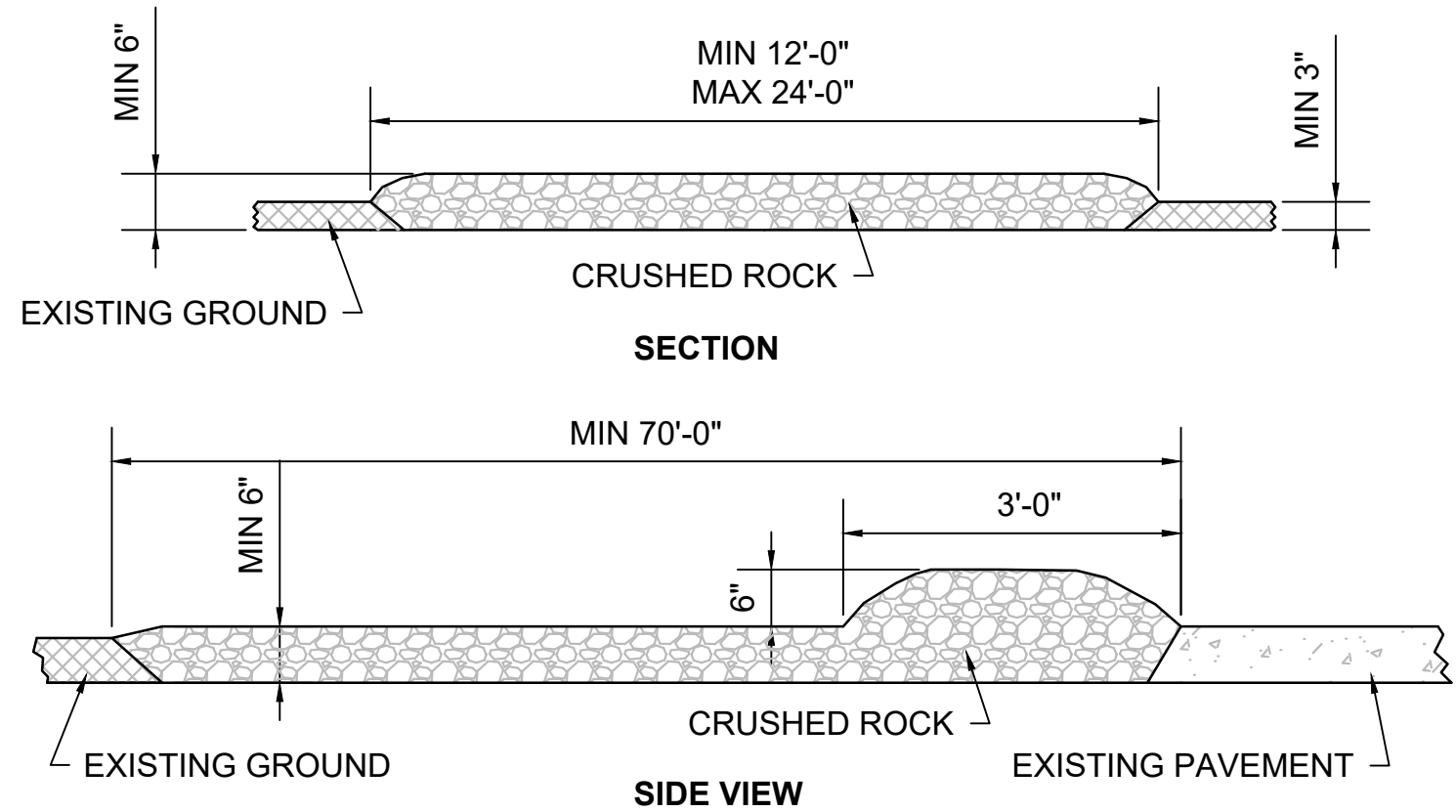
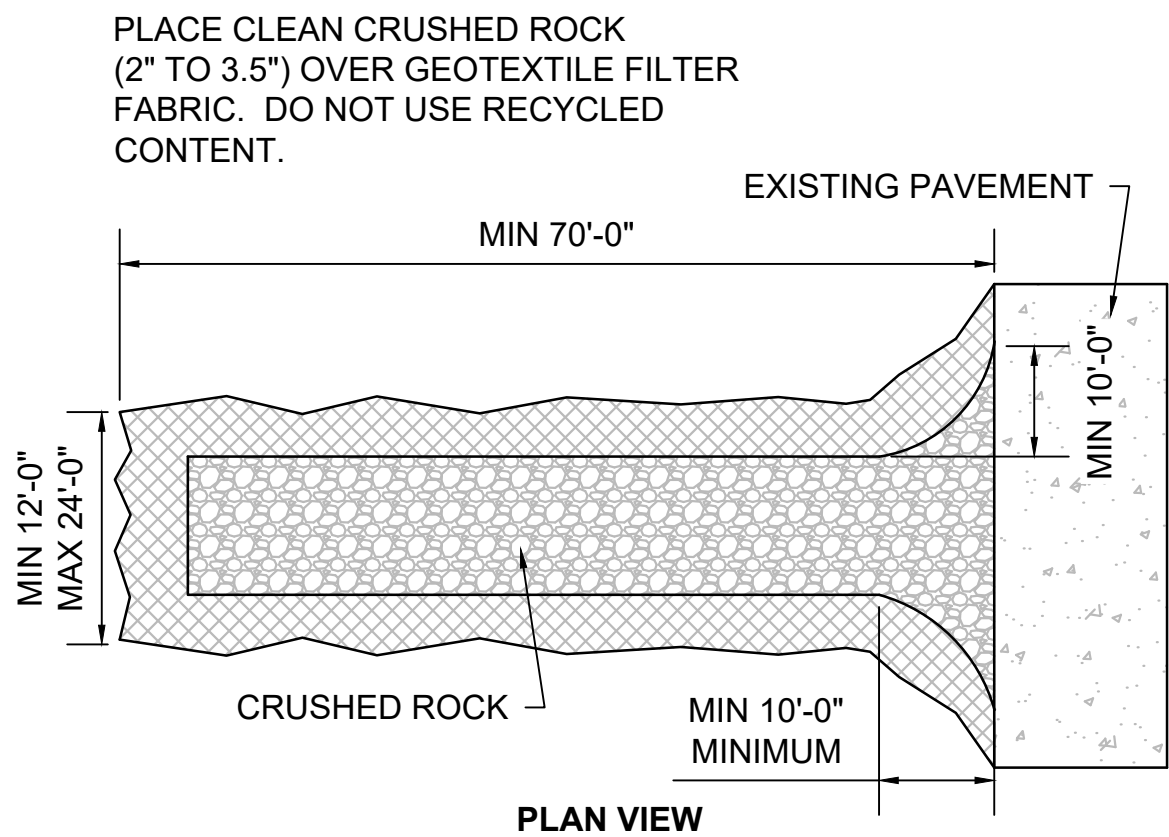
PROJECT NUMBER LPS-2025-01

SCALE AS SHOWN

SHEET NUMBER

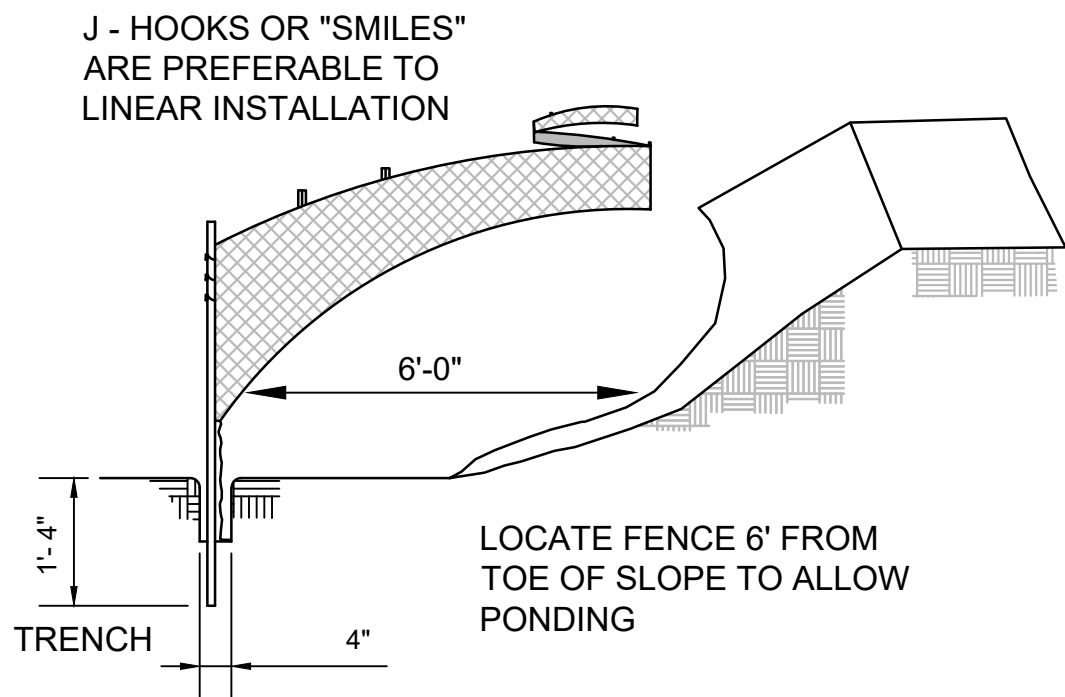


SIGN TO BE CONSTRUCTED OF A RIGID MATERIAL, SUCH AS PLYWOOD OR OUTDOOR SIGN BOARD. SIGN MUST BE CONSTRUCTED IN A MANNER TO PROTECT DOCUMENTS FROM WEATHER DAMAGE.



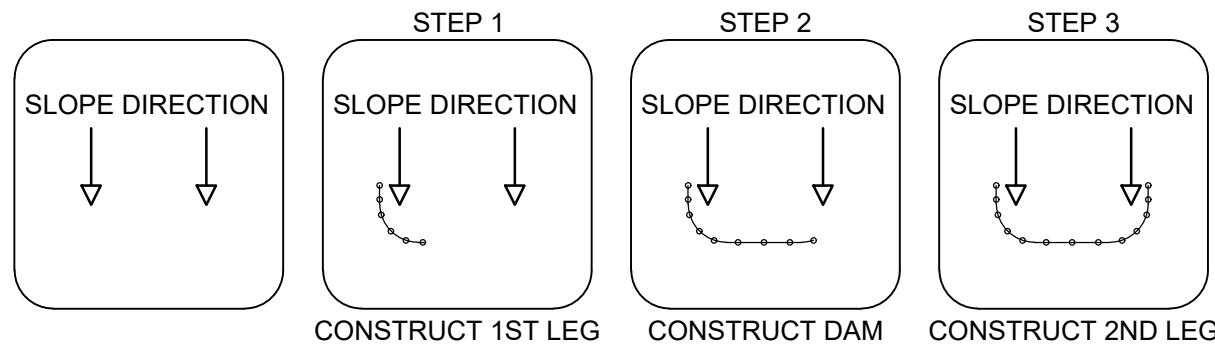
2
7/8 TYPICAL CONSTRUCTION ENTRANCE DETAIL
NOT TO SCALE

1
8/8 TYPICAL SIGN BOARD DETAIL
NOT TO SCALE

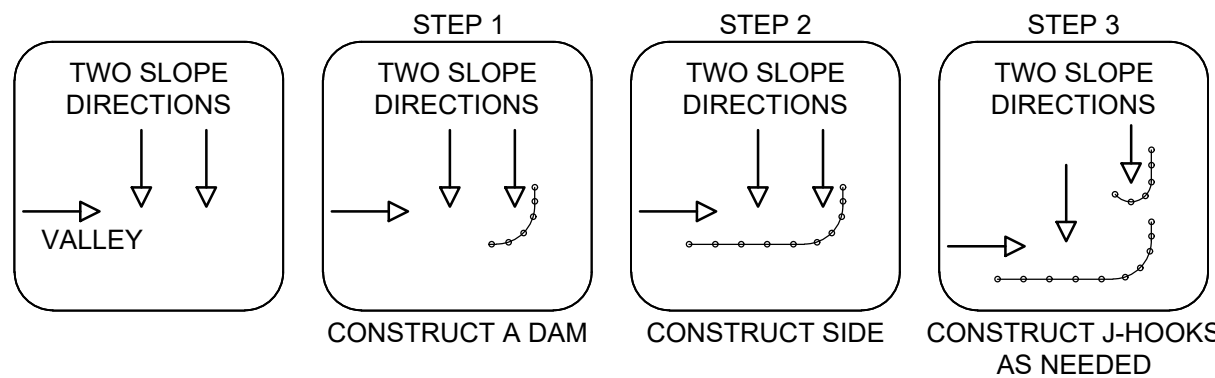


MAX J-HOOK SPACING	
SLOPE STEEPNESS	J-HOOK SPACING
2h:1v	25'
3h:1v	50'
4h:1v	75'
>5h:1v	100'

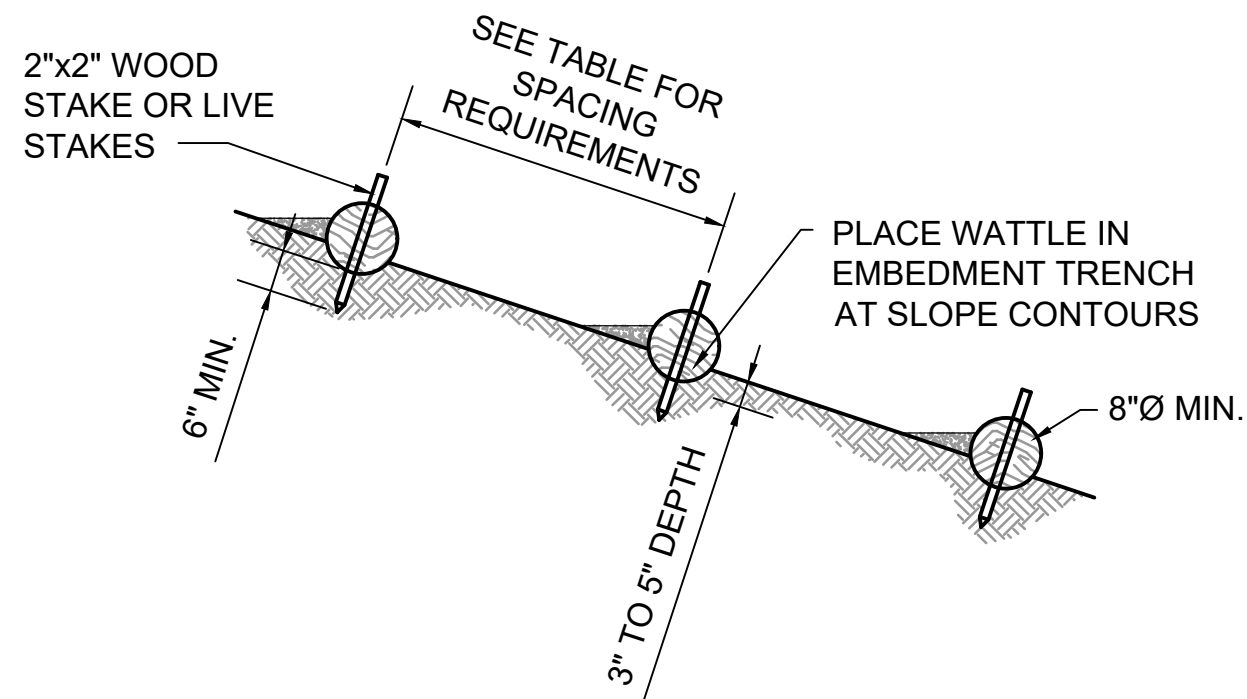
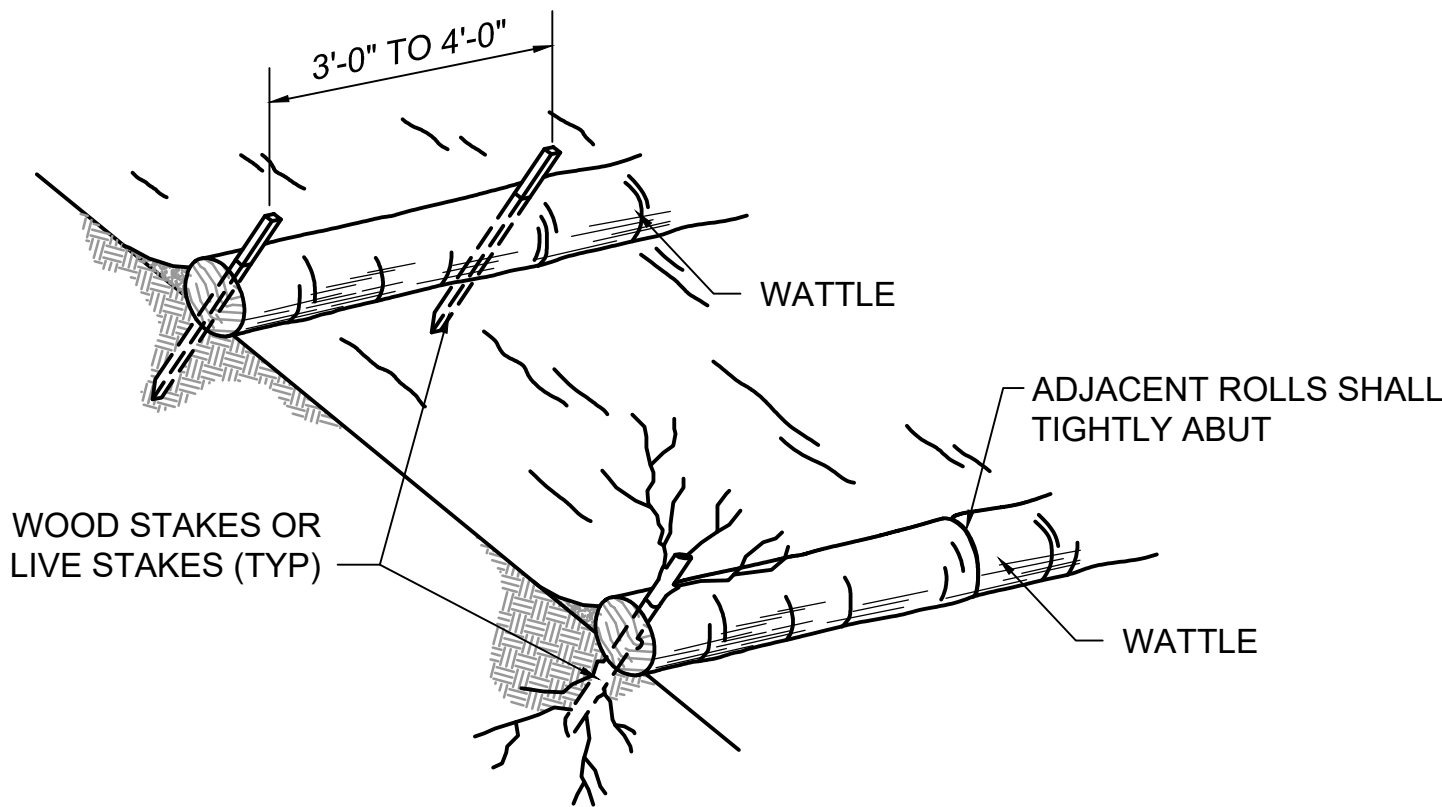
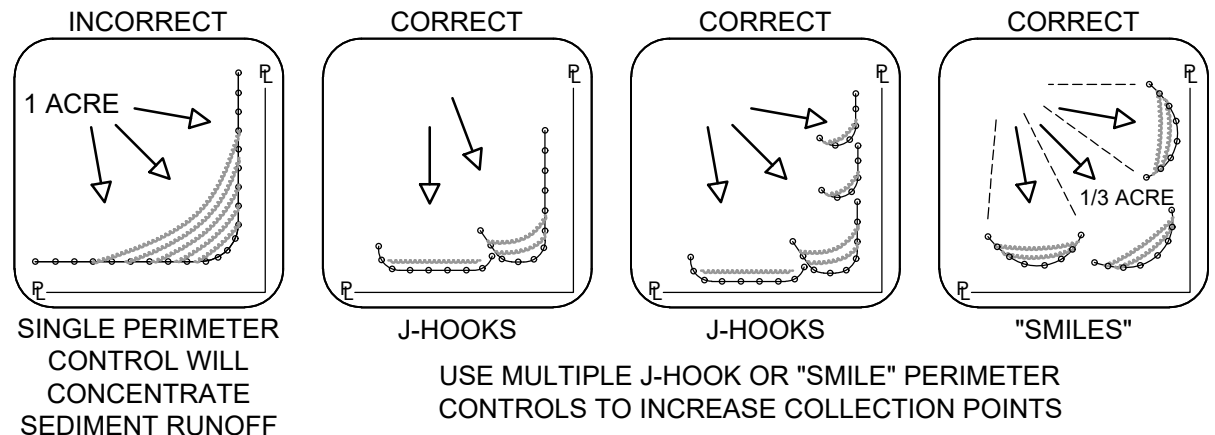
SILT FENCE PLACEMENT (ONE SLOPE)



SILT FENCE PLACEMENT (TWO SLOPES)



SILT FENCE PLACEMENT (PERIMETER CONTROL)



WATTLE SPACING ON SLOPE	
1:1 SLOPE	10'-0"
2:1 SLOPE	20'-0"
3:1 SLOPE	30'-0"
4:1 SLOPE	40'-0"
5:1 SLOPE	50'-0"
6:1 SLOPE	60'-0"
7:1 SLOPE	70'-0"
8:1 SLOPE	80'-0"

NOTE:
1. WATTLES TO BE PLACED ALONG SLOPE CONTOURS
2. WATTLES OR SEDIMENT CONTROL LOGS MAY BE TUBES OF COMPACTED FIBER (e.g. STRAW, COIR, CURLEX) OR ORGANIC (e.g. COMPOST SOCKS) MATERIALS DESIGNED TO INTERRUPT THE MOVEMENT OF WATER ALONG SLOPES AND RETAIN SEDIMENT

4
7/8 TYPICAL WATTLE BARRIER DETAIL
NOT TO SCALE

3
7/8 SEDIMENT SILT FENCE DETAIL
NOT TO SCALE

REVISIONS	DESCRIPTION	BY	DATE	NO.
	CONCEPT DESIGN	TFG	10/03/25	1
	90% DESIGN SUBMITTAL	TFG	12/05/25	2
	FINAL DESIGN	TFG	12/23/25	3

SEAL

PROFESSIONAL CIVIL ENGINEER
JUSTIN D. CERMAK
E-14535
2/24/2025
STATE OF NEBRASKA

SEAL

LOWER PLATTE SOUTH NRD
MIDDLE CREEK STABILIZATION
LINCOLN, LANCASTER COUNTY, NEBRASKA

EROSION CONTROL DETAILS

THE
FLATWATER
GROUP INC.

The FLATWATER GROUP Inc.
8200 Cody Drive, Suite A
Lincoln, NE 68512
402-435-5441
CA-1145

DATE	23-DEC-2025
DESIGNED BY	JC
DRAWN BY	STAFF
CHECKED BY	RK
PROJECT NUMBER	LPS-2025-01
SCALE	AS SHOWN
SHEET NUMBER	8