




LOWER PLATTE SOUTH natural resources district

3125 Portia Street | P.O. Box 83581 • Lincoln, Nebraska 68501-3581 | P: 402.476.2729 • F: 402.476.6454 | www.lpsnrd.org

Memorandum

Date: December 5, 2018
To: Board of Directors
From: David Potter, Assistant General Manager 
RE: Land Resources Subcommittee Meeting Minutes.

The Land Resources Subcommittee met at 5:00 pm on Tuesday, December 4, 2018 in the NRD Large Conference Room in Lincoln to discuss and take action on two agenda items. Subcommittee members present included Mark Spangler, Mike DeKalb, Dick Bolte, Vern Barrett, Gary Aldridge, Larry Ruth and Dave Landis. Members absent included Gary Hellerich. Others present included Ray Stevens, Paul Zillig, Cory Schmidt, John Albert, Donna Reid, Shaula Ross and myself. Mark Spangler called the meeting to order and gave a brief welcome.

a. The first item was to review and consider a Surface Water Quality BMP Cost-Share Application. Staff explained that one additional cost-share application had been received by the District for Fall work. The application is located in the Western Portion of the District and is connected to a current cost-share application approved for Ray Otto in August, 2018. After further review, the land (one field, not fenced) and layout system is actually divided between father (Ray) and son (Steven). It will remain the same amount of work but will now be divided between property owners. A separate cost-share application by Steven Otto is needed for the cost-share payment. Aerial photos are attached.

The application is for:

- Steven Otto – \$4,049.55 (60%) Terrace and Tile Outlet – SE ¼, 27-13-7, Saunders County.

It was moved by DeKalb, seconded by Barrett, and unanimously approved by the Subcommittee to recommend the Board of Directors approve the surface water quality cost-share application for Steven Otto in the amount totaling \$4,049.55.

b. The second item was consideration of the NRD/NSWCP 2019 LPS NRD Average Costs for the Surface Water Quality BMP Cost-Share Program. Our District Conservationist and NRD technician noted the practices frequently used in our District and some average costs that were not correctly listed

in the 2019 Docket. The prepared NRD/NSWCP average costs with corrections for 2019 were presented (attached). The one substitution was the 2019 narrow base non-storage for the 2018 storage – level or flat channel. A spreadsheet was also presented which compared the new cost share numbers with those approved January 2018 (attached). Schmidt noted that the 2019 average costs were reasonably comparable to last year’s numbers. The benefit with the NRD/NSWCP average costs being approved in December is that all new applications taken after the first of the year will operate off of one docket.

It was moved by Ruth, seconded by DeKalb, and unanimously approved by the Subcommittee to recommend the Board of Directors approve the 2019 LPS NRD Average Costs for the Surface Water Quality BMP Cost-share Program.

c. Under questions and comments, I shared a copy of the 2017 land use map of the District (attached) that was prepared for use in the District’s Master Plan. The map identifies the various land use types, including cropland and pasture, across the District. The map was prepared by USDA. Staff was able to then incorporate the east/west area line on the map and generate acres and percentages for the eastern portion and western portion of the District (attached). This information will be useful in justifying the splitting of the funds for east vs. west cost-share program.

There being no further business the meeting adjourned at 5:45 pm.

DP/dp

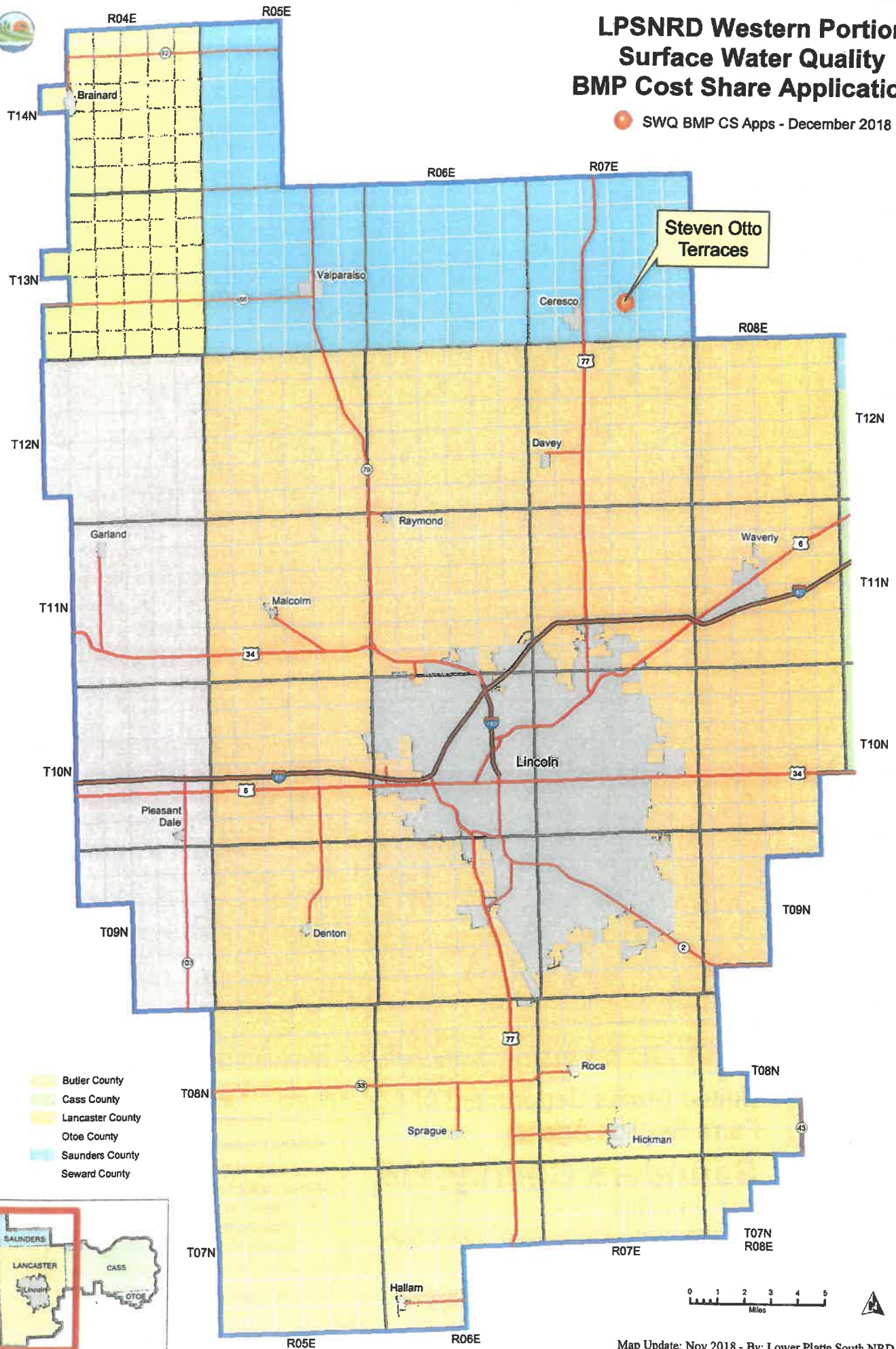
cc: Steve Seglin
Cory Schmidt, NRCS

Encl. 7 pgs

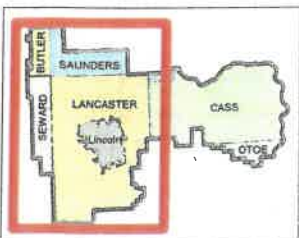


LPSNRD Western Portion Surface Water Quality BMP Cost Share Applications

 SWQ BMP CS Apps - December 2018

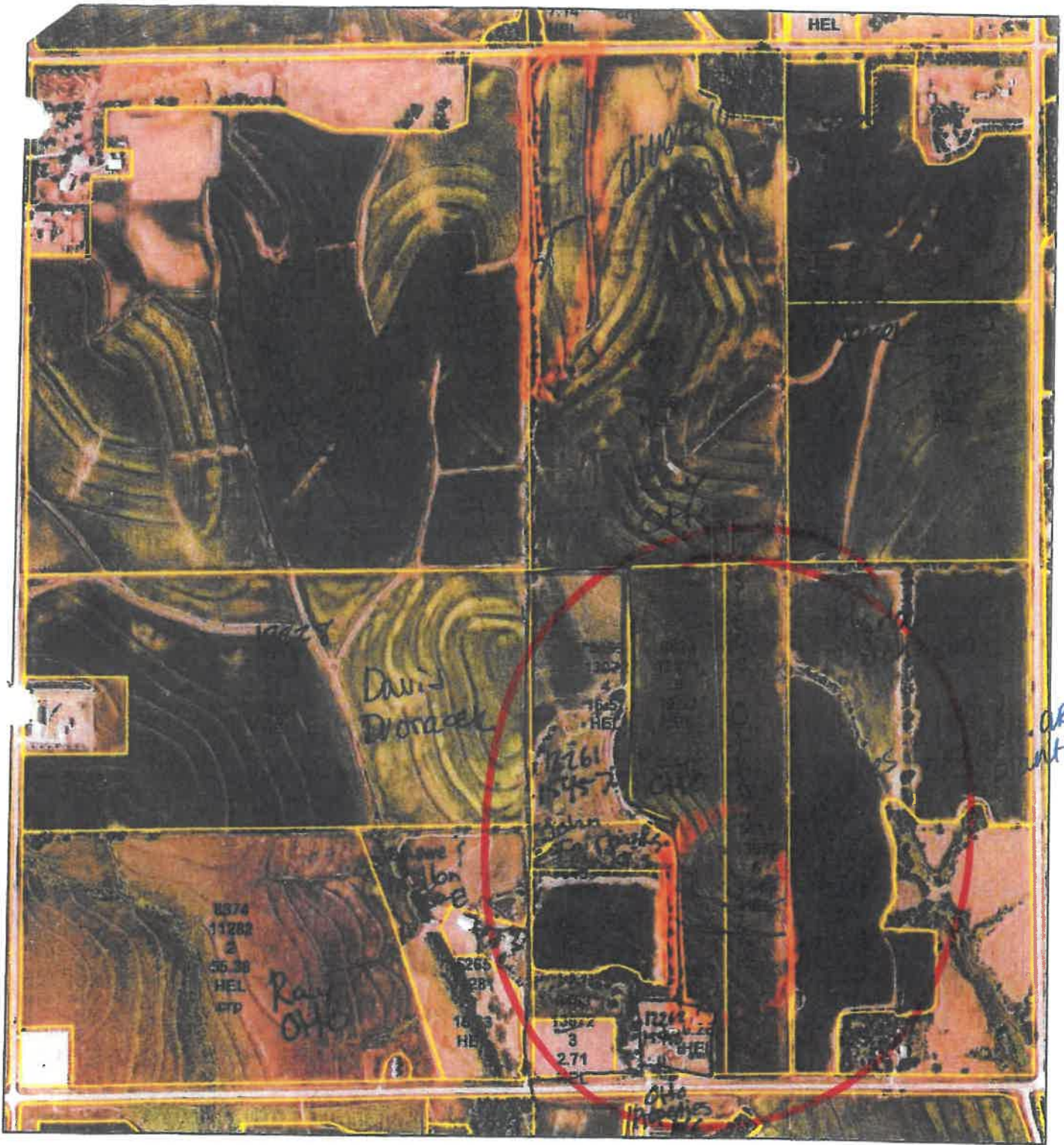


-  Butler County
-  Cass County
-  Lancaster County
-  Otoe County
-  Saunders County
-  Seward County



Map Update: Nov 2018 - By: Lower Platte South NRD, sdr

Sources: Lower Platte South Natural Resources District; Nebraska Department of Natural Resources; Nebraska Department of Roads



United States Department of Agriculture
Farm Service Agency

1 inch equals 670.9 feet

27-13-7E

Saunders County, NE

1:8,051

2006 Ortho-Photography - Not to Scale

August 28, 2007



Wetland Legend

fsa_gis_layers.SDE.wet_p_no155

Wetland Determination Identifiers

-  Restricted Use
-  Limited Restrictions
-  Exempt from Conservation Compliance Provisions

Disclaimer: Wetland identifiers do not represent the size, shape or specific determination of the area. Refer to your original determination (CPA-026 and attached maps) for exact wetland boundaries and determinations, or contact NRCS.

2019 LPSNRD Average Costs- Surface Water Quality BMP Cost-share Program

| Practice Code | Practice Name | Scenario | Scenario Unit | Total Payment per Unit | Program |
|---------------|-------------------------------------|--|---------------|------------------------|-----------|
| 342 | Critical area planting | Vegetation-normal tillage (Organic and Non-Organic) | Acre | \$ 223.26 | NRD/NSWCP |
| 362 | Diversion | Diversion | Cubic Yard | \$ 3.43 | NRD/NSWCP |
| 378 | Pond | Embankment Pond with less than 24" pipe | Cubic Yard | \$ 6.24 | NRD/NSWCP |
| 378 | Pond | Embankment Pond with greater than or equal to 24" pipe | Cubic Yard | \$ 5.47 | NRD/NSWCP |
| 380 | Windbreak/Shelterbelt Establishment | Hand Planted, Bare Root | Each | \$ 2.04 | NRD/NSWCP |
| 380 | Windbreak/Shelterbelt Establishment | Trees, machine planted | Foot | \$ 0.28 | NRD/NSWCP |
| 410 | Grade Stabilization Structure | Concrete Block Chute | SqFt | \$ 6.33 | NRD/NSWCP |
| 410 | Grade Stabilization Structure | Embankment, with less than 24" pipe | Cubic Yard | \$ 6.24 | NRD/NSWCP |
| 410 | Grade Stabilization Structure | Embankment, with greater than or equal to 24" pipe | Cubic Yard | \$ 5.47 | NRD/NSWCP |
| 410 | Grade Stabilization Structure | Rock Chute | Cubic Yard | \$ 78.25 | NRD/NSWCP |
| 412 | Grassed Waterway | Waterway with Side Dikes or Checks | Acre | \$ 3,618.84 | NRD/NSWCP |
| 412 | Grassed Waterway | Waterway, 25 to 50 sq. ft. | Acre | \$ 2,737.97 | NRD/NSWCP |
| 484 | Mulching | Natural Material - Straw | Acre | \$ 361.67 | NRD/NSWCP |
| 512 | Forage and Biomass Planting | Introduced Perennial & Native Grass Mix | Acre | \$ 83.30 | NRD/NSWCP |
| 550 | Range Planting | Native, Standard Prep | Acre | \$ 189.91 | NRD/NSWCP |
| 550 | Range Planting | Native, Wildlife or Pollinator (F1) | Acre | \$ 334.55 | NRD/NSWCP |
| 600 | Terrace | Broadbase, Non-Storage | Foot | \$ 1.81 | NRD/NSWCP |
| 600 | Terrace | Narrow Base - Non-Storage | Foot | \$ 3.15 | NRD/NSWCP |
| 600 | Terrace | Storage - Broadbase | Foot | \$ 3.37 | NRD/NSWCP |
| 600 | Terrace | Storage - Grass Back | Foot | \$ 4.69 | NRD/NSWCP |
| 600 | Terrace | Narrow Base - Storage | Foot | \$ 3.39 | NRD/NSWCP |
| 620 | Underground Outlet | PE or PVC, 6" or less | Foot | \$ 4.45 | NRD/NSWCP |
| 620 | Underground Outlet | PE or PVC, 8" or greater | Foot | \$ 5.10 | NRD/NSWCP |
| 620 | Underground Outlet | PVC or Dual Wall | Foot | \$ 8.28 | NRD/NSWCP |
| 638 | Water and Sediment Control Basin | WASCOB base | Cubic Yard | \$ 4.25 | NRD/NSWCP |
| 650 | Windbreak/Shelterbelt Renovation | Removal greater than 8". DBH with Dozer. | Foot | \$ 2.75 | NRD/NSWCP |

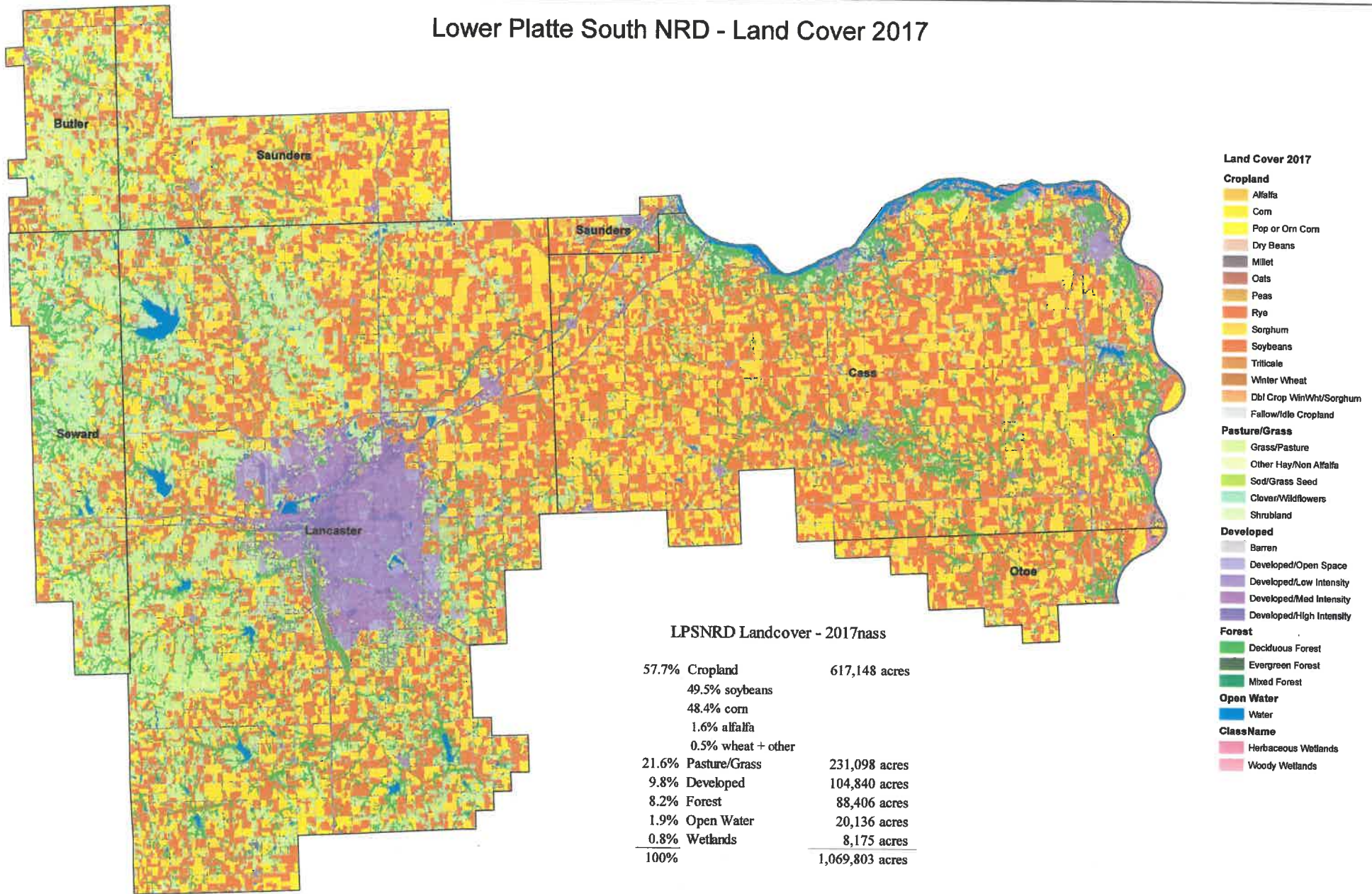
Updated and Approved: _____

Costs for additional eligible NSWCP practices can be found in the USDA / NRCS EQIP Practices Payment Ledger (Average cost = Payment x 2)

2019 - 2018 Docket Comparison

| Practice Code | Practice Name | Scenario | Scenario Unit | 2019 PPU | 2018 PPU | Difference |
|---------------|-------------------------------------|--|---------------|------------|------------|------------|
| 342 | Critical area planting | Vegetation-normal tillage (Organic and Non-Organic) | Acre | \$223.26 | \$226.70 | -\$3.44 |
| 362 | Diversion | Diversion | Cubic Yard | \$3.43 | \$3.40 | \$0.03 |
| 378 | Pond | Embankment Pond with less than 24" pipe | Cubic Yard | \$6.24 | \$6.04 | \$0.20 |
| 378 | Pond | Embankment Pond with greater than or equal to 24" pipe | Cubic Yard | \$5.47 | \$5.28 | \$0.19 |
| 380 | Windbreak/Shelterbelt Establishment | Hand Planted, Bare Root | Each | \$2.04 | \$1.89 | \$0.15 |
| 380 | Windbreak/Shelterbelt Establishment | Trees, machine planted | Foot | \$0.28 | \$0.26 | \$0.02 |
| 410 | Grade Stabilization Structure | Concrete Block Chute | SqFt | \$6.33 | \$6.48 | -\$0.15 |
| 410 | Grade Stabilization Structure | Embankment, with less than 24" pipe | Cubic Yard | \$6.24 | \$6.04 | \$0.20 |
| 410 | Grade Stabilization Structure | Embankment, with greater than or equal to 24" pipe | Cubic Yard | \$5.47 | \$5.29 | \$0.18 |
| 410 | Grade Stabilization Structure | Rock Chute | Cubic Yard | \$78.25 | \$75.51 | \$2.74 |
| 412 | Grassed Waterway | Waterway with Side Dikes or Checks | Acre | \$3,618.84 | \$3,498.01 | \$120.83 |
| 412 | Grassed Waterway | Waterway, 25 to 50 sq. ft. | Acre | \$2,737.97 | \$2,643.73 | \$94.24 |
| 484 | Mulching | Natural Material - Straw | Acre | \$361.67 | \$461.40 | -\$99.73 |
| 512 | Forage and Biomass Planting | Introduced Perennial & Native Grass Mix | Acre | \$83.30 | \$77.05 | \$6.25 |
| 550 | Range Planting | Native, Standard Prep | Acre | \$189.91 | \$245.72 | -\$55.81 |
| 550 | Range Planting | Native, Wildlife or Pollinator (F1) | Acre | \$334.55 | \$343.89 | -\$9.34 |
| 600 | Terrace | Broadbase, Non-Storage | Foot | \$1.81 | \$1.79 | \$0.02 |
| 600 | Terrace | Narrow Base - Non-Storage | Foot | \$3.15 | | \$3.15 |
| 600 | Terrace | Storage - Level or Flat Channel | Foot | | \$2.20 | -\$2.20 |
| 600 | Terrace | Storage - Broadbase | Foot | \$3.37 | \$3.35 | \$0.02 |
| 600 | Terrace | Storage - Grass Back | Foot | \$4.69 | \$4.67 | \$0.02 |
| 600 | Terrace | Narrow Base - Storage | Foot | \$3.39 | \$3.38 | \$0.01 |
| 620 | Underground Outlet | PE or PVC, 6" or less | Foot | \$4.45 | \$4.28 | \$0.17 |
| 620 | Underground Outlet | PE or PVC, 8" or greater | Foot | \$5.10 | \$5.06 | \$0.04 |
| 620 | Underground Outlet | PVC or Dual Wall | Foot | \$8.28 | \$8.07 | \$0.21 |
| 638 | Water and Sediment Control Basin | WASCOB base | Cubic Yard | \$4.25 | \$4.10 | \$0.15 |
| 650 | Windbreak/Shelterbelt Renovation | Removal greater than 8". DBH with Dozer. | Foot | \$2.75 | \$2.73 | \$0.02 |

Lower Platte South NRD - Land Cover 2017



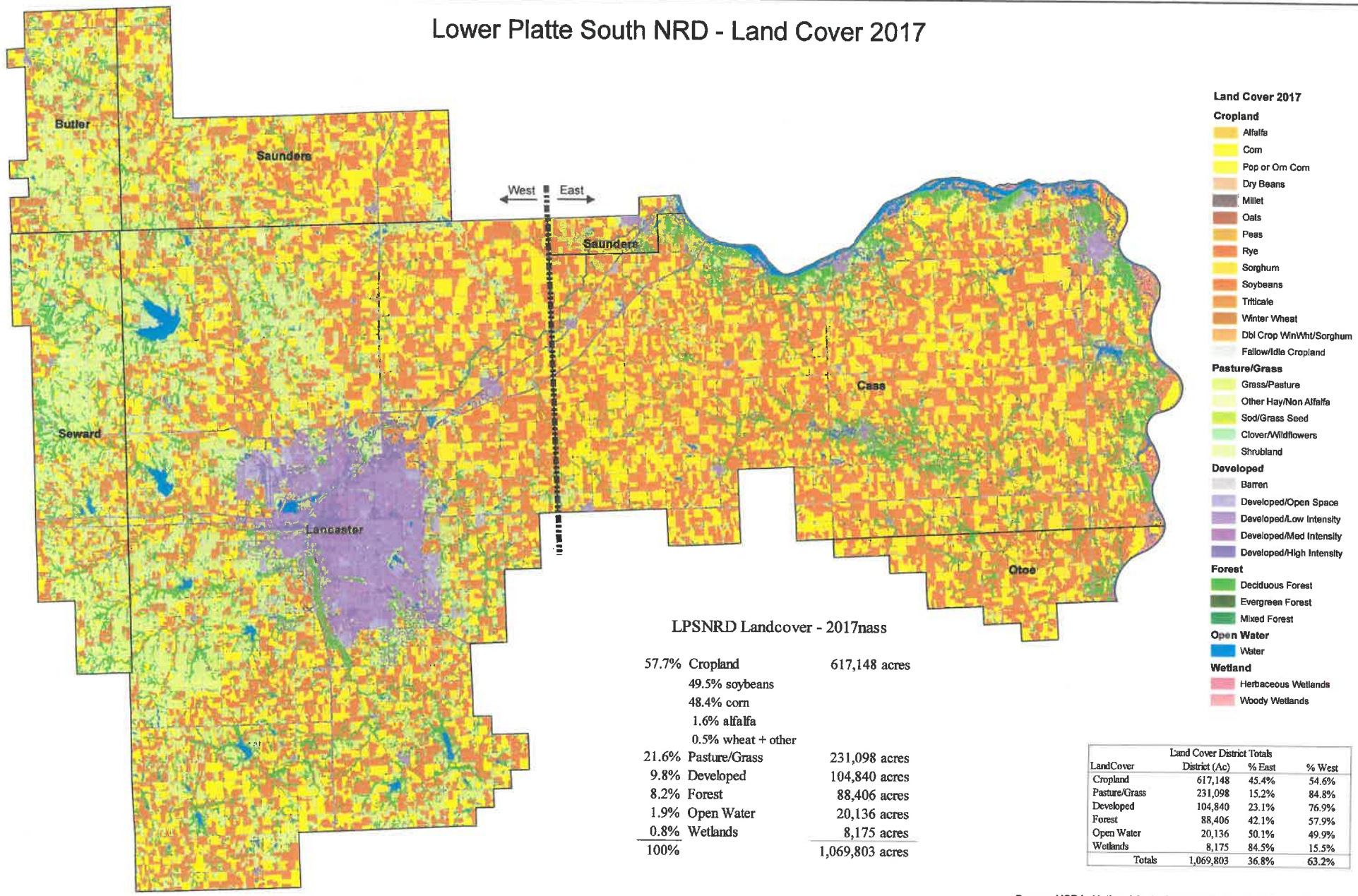
- Land Cover 2017**
- Cropland**
 - Alfalfa
 - Corn
 - Pop or Orn Corn
 - Dry Beans
 - Millet
 - Oats
 - Peas
 - Rye
 - Sorghum
 - Soybeans
 - Triticale
 - Winter Wheat
 - Dbf Crop WinWht/Sorghum
 - Fallow/Idle Cropland
 - Pasture/Grass**
 - Grass/Pasture
 - Other Hay/Non Alfalfa
 - Sod/Grass Seed
 - Clover/Wildflowers
 - Shrubland
 - Developed**
 - Barren
 - Developed/Open Space
 - Developed/Low Intensity
 - Developed/Med Intensity
 - Developed/High Intensity
 - Forest**
 - Deciduous Forest
 - Evergreen Forest
 - Mixed Forest
 - Open Water**
 - Water
 - ClassName**
 - Herbaceous Wetlands
 - Woody Wetlands

LPSNRD Landcover - 2017nass

| | | |
|-------|----------------------|-----------------|
| 57.7% | Cropland | 617,148 acres |
| | 49.5% soybeans | |
| | 48.4% corn | |
| | 1.6% alfalfa | |
| | 0.5% wheat + other | |
| 21.6% | Pasture/Grass | 231,098 acres |
| 9.8% | Developed | 104,840 acres |
| 8.2% | Forest | 88,406 acres |
| 1.9% | Open Water | 20,136 acres |
| 0.8% | Wetlands | 8,175 acres |
| 100% | | 1,069,803 acres |

Source: USDA, National Agricultural Statistics Service Cropland Data Layer

Lower Platte South NRD - Land Cover 2017



LPSNRD Landcover - 2017nass

| | | |
|-------|--------------------|-----------------|
| 57.7% | Cropland | 617,148 acres |
| | 49.5% soybeans | |
| | 48.4% corn | |
| | 1.6% alfalfa | |
| | 0.5% wheat + other | |
| 21.6% | Pasture/Grass | 231,098 acres |
| 9.8% | Developed | 104,840 acres |
| 8.2% | Forest | 88,406 acres |
| 1.9% | Open Water | 20,136 acres |
| 0.8% | Wetlands | 8,175 acres |
| 100% | | 1,069,803 acres |

- Land Cover 2017**
- Cropland**
 - Alfalfa
 - Corn
 - Pop or Orm Corn
 - Dry Beans
 - Millet
 - Oats
 - Peas
 - Rye
 - Sorghum
 - Soybeans
 - Triticale
 - Winter Wheat
 - Dbi Crop Win/Whit/Sorghum
 - Fallow/Idle Cropland
 - Pasture/Grass**
 - Grass/Pasture
 - Other Hay/Non Alfalfa
 - Sod/Grass Seed
 - Clover/Wildflowers
 - Shrubland
 - Developed**
 - Barren
 - Developed/Open Space
 - Developed/Low Intensity
 - Developed/Med Intensity
 - Developed/High Intensity
 - Forest**
 - Deciduous Forest
 - Evergreen Forest
 - Mixed Forest
 - Open Water**
 - Water
 - Wetland**
 - Herbaceous Wetlands
 - Woody Wetlands

| LandCover | Land Cover District Totals | | |
|---------------|----------------------------|--------------|--------------|
| | District (Ac) | % East | % West |
| Cropland | 617,148 | 45.4% | 54.6% |
| Pasture/Grass | 231,098 | 15.2% | 84.8% |
| Developed | 104,840 | 23.1% | 76.9% |
| Forest | 88,406 | 42.1% | 57.9% |
| Open Water | 20,136 | 50.1% | 49.9% |
| Wetlands | 8,175 | 84.5% | 15.5% |
| Totals | 1,069,803 | 36.8% | 63.2% |

Source: USDA, National Agricultural Statistics Service Cropland Data Layer

Land Cover 2017 Summary Information

| Land Cover District Totals | | |
|----------------------------|---------|---------------|
| Land Cover | % Total | District (Ac) |
| Cropland | 57.7% | 617,148 |
| Pasture/Grass | 21.6% | 231,098 |
| Developed | 9.8% | 104,840 |
| Forest | 8.2% | 88,406 |
| Open Water | 1.9% | 20,136 |
| Wetlands | 0.8% | 8,175 |
| Totals | 100% | 1,069,803 |

| Land Cover LPSNRD West Totals | | |
|-------------------------------|--------------|-----------|
| Land Cover | % West Total | West (Ac) |
| Cropland | 49.8% | 336,813 |
| Pasture/Grass | 29.0% | 195,887 |
| Developed | 11.9% | 80,651 |
| Forest | 7.6% | 51,214 |
| Open Water | 1.5% | 10,044 |
| Wetlands | 0.2% | 1,271 |
| Totals | 100.00% | 675,880 |

| Land Cover LPSNRD East Totals | | |
|-------------------------------|--------------|-----------|
| Land Cover | % East Total | East (Ac) |
| Cropland | 71.2% | 280,335 |
| Pasture/Grass | 8.9% | 35,211 |
| Developed | 6.1% | 24,189 |
| Forest | 9.4% | 37,192 |
| Open Water | 2.6% | 10,092 |
| Wetlands | 1.8% | 6,904 |
| Totals | 100.0% | 393,923 |

| Land Cover District Totals | | | |
|----------------------------|---------------|--------|--------|
| Land Cover | District (Ac) | % East | % West |
| Cropland | 617,148 | 45.4% | 54.6% |
| Pasture/Grass | 231,098 | 15.2% | 84.8% |
| Developed | 104,840 | 23.1% | 76.9% |
| Forest | 88,406 | 42.1% | 57.9% |
| Open Water | 20,136 | 50.1% | 49.9% |
| Wetlands | 8,175 | 84.5% | 15.5% |
| Totals | 1,069,803 | 36.8% | 63.2% |