



LOWER PLATTE SOUTH natural resources district

3125 Portia Street | P.O. Box 83581 • Lincoln, Nebraska 68501-3581
P: 402.476.2729 • F: 402.476.6454 | www.lpsnrd.org

Memorandum

TO: Board of Directors
DATE: August 10, 2020
FROM: David Potter, Assistant General Manager
SUBJECT: Integrated Management Subcommittee meeting minutes.

The Integrated Management Subcommittee met virtually on Thursday, August 6, 2020, at 5:30 p.m. via Go-To Meeting. Members present included Sarah Wilson, Bob Andersen, Gary Hellerich, Bruce Johnson, Chelsea Johnson, Greg Osborn, Luke Peterson and Mark Spangler. Others present were Larry Ruth, Paul Zillig, Dan Schulz, Dick Ehrman, and David Potter, all with LPSNRD; Melissa Mosier, Jennifer Schellpeper, Jesse Winter, and Beth Eckles, all with NeDNR; and Dustin Wilcox with the NARD serving as the liaison between NeDNR and the NRDs. The meeting was called to order at 5:33 by Chair Wilson.

The first agenda item was the 2019 Annual Integrated Management Plan Report. The Lower Platte South Natural Resources District (LPSNRD) and the Nebraska Department of Natural Resources (NeDNR) jointly adopted a voluntary Integrated Management Plan (IMP). The IMP became effective on May 15, 2014, with the goal of jointly managing groundwater and surface waters within the LPSNRD in order to sustain a balance between water uses and supplies for the long-term. This Annual Report covers the progress made towards Voluntary IMP implementation for both the LPSNRD and NeDNR in 2019. It is consistent with Chapter 9 of the IMP, which outlines the procedures for review and potential modification of the Voluntary IMP. In this review process, the LPSNRD and NeDNR provides an annual report on data collected, annual report on new groundwater or surface permits and uses, and reviews progress made toward achieving the goals and objectives. The Annual Report and power point presentation was provided to the subcommittee and the adopted IMP can be found on the LPSNRD website.

Melissa Mosier and David Potter presented a power point and briefly reviewed the contents of the draft IMP Report, noting the changes from last year, highlighting the joint actions, and stating the report will be made available to the public for review. It was noted that no amendments are needed to the Integrated Management Plan at this time but some potential amendments by NeDNR in the future were mentioned. All potential (and needed) amendments to the plan should be compiled and handled at the same time. With the subcommittee's recommendation, the 2019 Report will be provided to the Board and the public at the Board meeting on August 26st beginning at 7:00 p.m. Discussion was held on the draft report by staff and the Directors. A couple needed changes were noted and have been incorporated into the final report.

It was moved by Osborn, seconded by B. Johnson and unanimously approved to accept and present the 2019 Annual Integrated Management Plan Report to the Board of Directors.

The second item was consideration of an amendment to the Lower Platte River Consortium Interlocal Agreement. In August 2016, the District entered into an Interlocal Agreement with Lower Platte North NRD, Pappio-Missouri River NRD, City of Lincoln-water, Metropolitan Utilities District (MUD), and the Nebraska Department of Natural Resources (NeDNR) to form the Lower Platte River Consortium. The agreed upon purpose of the Consortium is to study the long-term water supplies available to the Lower Platte River sub-basin to enhance stream flows or aquifer storage to support during times of drought. The study conducted by the Consortium has led to the development of a Drought Contingency Plan. The Lower Platte River Drought Contingency Plan was approved by the U.S. Bureau of Reclamation (BOR) on September 30, 2019 as a requirement of their Water Smart Grand funding and approved by LPSNRD on December 18, 2019 on behalf of the Consortium. Funding was also obtained through the Water Sustainability Fund (WSF). The complete Plan can be found on the LPSNRD website at <https://www.lpsnrd.org/lower-platte-river-consortium>. A professional services agreement with HDR for a drought workshop was recently approved and is tentatively scheduled for September 2020.

The duration of the Consortium Interlocal Agreement was for three (3) years beginning September 27, 2016. In 2019, the agreement was amended to extend the duration to September 27, 2020. With more work planned by the Consortium, including a table-top exercise/workshop, the agreement needs to once again be amended. The purpose of the Amendment to the Lower Platte River Consortium is to extend the duration of the agreement for one (1) additional year, to September 2021. The proposed amendment was provided to the subcommittee.

It was moved by Andersen, seconded by Hellerich and unanimously approved to recommend the Board of Directors authorize the General Manager to approve an Amendment to the Interlocal Agreement for the Platte River Consortium with LPSNRD, LPNDR, PMRNRD, City of Lincoln, MUD, and NeDNR extending the agreement for one year, subject to legal counsel review.

The final agenda item was review of the FY20 measurable goal(s) and recommendation of the FY21 goal(s) for the subcommittee to Finance and Planning for inclusion in the FY21 LRIP. As directed in the LPSNRD 2019 Master Plan, a list of measurable goals is to be developed for each subcommittee for the fiscal year and then those goals are to be reviewed each year to see what has been accomplished. The measurable goal for the IM subcommittee for FY20 was to approve the Drought Contingency Study. The plan was approved by the Board in December 2019. The goal for FY21 is to complete the Drought Contingency Study Table Top Exercise/Workshop. This is tentatively scheduled for September 2020.

It was moved by Osborn, seconded by Andersen and unanimously approved to approve the identified measurable goal as part of the FY21 Long Range Implementation Plan.

With no further business, the subcommittee meeting adjourned at approximately 6:25 p.m.

**ANNUAL
INTEGRATED
MANAGEMENT
PLAN REPORT**

2019



**JOINTLY PREPARED BY
THE LOWER PLATTE
SOUTH NATURAL
RESOURCES DISTRICT
AND THE NEBRASKA
DEPARTMENT OF
NATURAL RESOURCES**

**Submitted at the Lower Platte South Board Meeting/IMP Annual Review
August 26, 2020**



LOWER PLATTE SOUTH
natural resources district

NEBRASKA

Good Life. Great Water.

DEPT. OF NATURAL RESOURCES

TABLE OF CONTENTS

LIST OF FIGURES	3
LIST OF TABLES	3
INTRODUCTION	4
MONITORING AND DATA COLLECTION	5
Surface Water Monitoring	5
Streamgaging	5
Surface Water Permitting Actions.....	10
Voluntary Surface Water Use Reporting	11
Surface Water Pump-Site Visits	12
Groundwater Monitoring	13
IMP Groundwater Management Area.....	13
Metering and Groundwater Level Monitoring.....	14
Groundwater Permitting Activities	16
Land Use and Land Cover (LULC) Monitoring and Actions	17
2019 IMP REGULATORY ACTIONS	20
LPSNRD Groundwater Acres Limitations	20
NeDNR Surface Water Acres Limitations.....	20
Future limits on water use	20
STUDIES AND PLANNING	21
Additional IMP Components.....	21
Stream Accretion and Depletion Calculator Expansion	22
Lower Platte Missouri Tributaries Model Development.....	22
WATER INVENTORY AND WATER USE/SUPPLY MANAGEMENT	24
LPSNRD Accomplishments	24
NeDNR’s INSIGHT Web Portal.....	24
EDUCATION/OUTREACH	25
NeDNR Activities	25
Events.....	25
Educational Interactive Web Applications	25
LPSNRD Activities	26
COLLABORATION WITH OTHER ENTITIES	28
Eastern Nebraska Water Resources Assessment.....	28
Lower Platte River Basin Coalition	28

Lower Platte River Consortium	28
Lower Platte River Corridor Alliance	29
Other Collaborations	29
JOINTLY IDENTIFIED ACTIONS FOR SUCCEEDING TWO YEARS.....	30

LIST OF FIGURES

FIGURE 1: LOCATION OF USGS STREAMGAGES IN THE LPSNRD.....	6
FIGURE 2: HISTORICAL ANNUAL DISCHARGE FOR SALT CREEK AT ROCA, NE (SOURCE: USGS-NWIS. SOME PROVISIONAL DATA USED).	7
FIGURE 3: HISTORICAL ANNUAL DISCHARGE SALT CREEK AT GREENWOOD, NE (SOURCE: USGS-NWIS. SOME PROVISIONAL DATA USED).	7
FIGURE 4: HISTORICAL ANNUAL DISCHARGE FOR LITTLE SALT CREEK NEAR LINCOLN, NE (SOURCE: USGS-NWIS. SOME PROVISIONAL DATA USED).	8
FIGURE 5: HISTORICAL ANNUAL DISCHARGE FOR STEVENS CREEK NEAR LINCOLN, NE (SOURCE: USGS-NWIS. SOME PROVISIONAL DATA USED).	8
FIGURE 6: HISTORICAL ANNUAL DISCHARGE FOR THE PLATTE RIVER AT LOUISVILLE, NE (SOURCE: USGS-NWIS. SOME PROVISIONAL DATA USED).	9
FIGURE 7: MAP SHOWING THE LOCATION OF SURFACE WATER PERMITTING ACTIONS IN 2019.	10
FIGURE 8: GRAPHIC SHOWING GENERAL REASONS FOR NON-USE OF SURFACE WATER PERMITS IN 2019.	12
FIGURE 9: GROUNDWATER USE IN THE HYDROLOGICALLY CONNECTED AREA (HCA) OF LPSNRD.	13
FIGURE 10: REGISTERED DOMESTIC AND PUBLIC SUPPLY WELLS IN THE HYDROLOGICALLY CONNECTED AREA (HCA) OF LPSNRD.	14
FIGURE 11: 2019 GROUNDWATER LEVEL COMPARISON OF SPRING 2018 TO SPRING 2019 MEASUREMENTS.	15
FIGURE 12: LPSNRD GROUNDWATER WELL PERMITS APPROVED OR COMPLETED IN 2019.	16
FIGURE 13: THREE LPSNRD GROUNDWATER WELL PERMIT WERE APPROVED IN THE HCA IN 2019.	17
FIGURE 14: 2019 HCA CERTIFIED GROUNDWATER IRRIGATED ACRES.	18
FIGURE 15: 2019 DISTRICT-WIDE CERTIFIED GROUNDWATER IRRIGATED ACRES.	19
FIGURE 16: GEOGRAPHIC AREAS OF THE LOWER PLATTE AND MISSOURI TRIBUTARIES MODELS.	23
FIGURE 17: SCREENSHOT OF NEDNR'S EDUCATIONAL INTERACTIVE WEB APPLICATIONS.	26

LIST OF TABLES

TABLE 1: LISTING OF USGS STREAMGAGES IN LPSNRD.	5
TABLE 2: IRRIGATED ACRES CHANGES ASSOCIATED WITH SURFACE WATER PERMITTING ACTIONS IN 2019.....	11
TABLE 3: SURFACE WATER PERMITS PARTIALLY OR FULLY CANCELLED IN 2019.	11
TABLE 4: AVERAGE WELL LEVEL CHANGE BY GROUNDWATER RESERVOIR, SPRING 2018 TO SPRING 2019.	15
TABLE 5: LPSNRD APPROVED OR COMPLETED GROUNDWATER WELLS IN 2019.....	16

2019 ANNUAL REPORT FOR LOWER PLATTE SOUTH NATURAL RESOURCES DISTRICT and NEBRASKA DEPARTMENT OF NATURAL RESOURCES INTEGRATED MANAGEMENT PLAN

Jointly prepared by the Lower Platte South NRD and the Nebraska Department of Natural Resources
Submitted on August 26, 2020

Introduction

The Lower Platte South Natural Resources District (LPSNRD) and the Nebraska Department of Natural Resources (NeDNR) jointly adopted a voluntary Integrated Management Plan (IMP), which became effective on May 15, 2014. The overarching purpose of the IMP is to jointly manage groundwater and surface waters within the LPSNRD in order to sustain a balance between water uses and supplies for the near and long term. An in-depth public involvement plan, which included focus groups, a 13-month stakeholder process, a virtual town hall, and outside agency outreach, was an integral part in developing goals and objectives for the IMP.

This Annual Report covers the progress made towards Voluntary IMP implementation for both the LPSNRD and NeDNR in 2019. It is consistent with Chapter 9 of the IMP, which outlines the procedures for review and potential modification of the Voluntary IMP. Here, LPSNRD and NeDNR will report on data collected, new groundwater or surface permits and uses, and will review progress made toward achieving the goals and objectives.

As a part of the process, the LPSNRD and NeDNR staff met to discuss progress made in 2019 towards the goals and objectives of the plan, action steps for the next two years (see the “Jointly Identified Actions” section), and whether modifications to the IMP were needed. The LPSNRD and NeDNR jointly decided that no modifications to the IMP were needed at the time of the 2019 annual review. The LPSNRD and NeDNR will continue to discuss the need for modifications to achieve consistency between the IMP and the Lower Platte Basin Water Management Plan, which was finalized in October 2017.

The LPSNRD and NeDNR worked collaboratively to write this report. Highlights from the report were presented to the LPSNRD Board and the public on August 26, 2020, at LPSNRD’s regularly scheduled Board meeting. Notice of the Board meeting was published in the Lincoln Journal Star on August 13, 2020, and a public announcement of the IMP review was posted on both the LPSNRD and NeDNR websites at least one week prior to the Board meeting.

As the LPSNRD regulates groundwater and the NeDNR regulates surface water, some sections were written individually. But wherever possible, sections were written jointly to reflect the partnership between LPSNRD and NeDNR in integrated groundwater and surface water management. This annual report provides transparency to each other, and to the public, about the progress made by LPSNRD and NeDNR in implementing the Voluntary IMP as a means to protect interconnected groundwater and surface water resources for the near and long term.

Monitoring and Data Collection

Surface Water Monitoring

Streamgaging

The U.S. Geological Survey (USGS) owns and operates 21 streamgages in LPSNRD. All but one (Weeping Water Creek at Union, NE) are located in the IMP surface water management area (Table 1, Figure 1). Streamflow data on these gages is available on the USGS's National Water Information System (NWIS) at <http://waterdata.usgs.gov/>. NeDNR regularly assesses the need for modifications to the network in the IMP area.

Table 1: Listing of USGS streamgages in LPSNRD.

Gage Name	Gage Number	Begin Date	LPSNRD assist in funding?
Salt Creek at Roca, Nebr.	06803000	5/14/1951	yes
Salt Creek at Pioneers Boulevard at Lincoln, Nebr.	06803080	6/20/1994	yes
Haines Branch at SW 56th St at Lincoln, Nebr.	06803093	6/20/1994	yes
Middle Creek at SW 63rd St at Lincoln, Nebr.	06803170	6/20/1994	yes
Oak Creek at Air Park Road at Lincoln, Nebr.	06803486	5/21/1987	yes
Salt Creek at Fairgrounds at Lincoln, Nebr.	06803495	6/20/1994	no
Salt Creek at 27 th ST, Lincoln, Nebr.	06803500	5/11/1942	yes
Little Salt Creek near Lincoln, Nebr.	06803510	5/11/1942	yes
Salt Creek at 70th Street at Lincoln, Nebr.	06803513	5/31/1994	yes
Stevens Creek near Lincoln, Nebr.	06803520	10/14/1968	yes
Rock Creek near Ceresco, Nebr.	06803530	4/1/1970	yes
Salt Creek at Greenwood, Nebr.	06803555	1/16/1952	no
Wahoo Creek at Ashland, Nebr.	06804700	2/22/1990	yes
Weeping Water Creek at Union, Nebr.	06806500	1/11/1950	yes
Antelope Creek at 27th St at Lincoln, Nebr.	06803300	3/14/2012	yes
Deadman's Run at 38th Street at Lincoln, Nebr.	06803502	08/27/2014	no
Salt Creek near Ashland, Nebr.	06805000	10/01/2007	yes
North Oak Creek at Valparaiso, Nebr.	06803430	8/12/2016	yes
North Oak Creek near Touhy, Nebr.	06803420	8/12/2016	yes
Platte River near Ashland, Nebr.	06801000	8/20/1928	no
Platte River at Louisville, Nebr.	06805500	5/15/1953	no

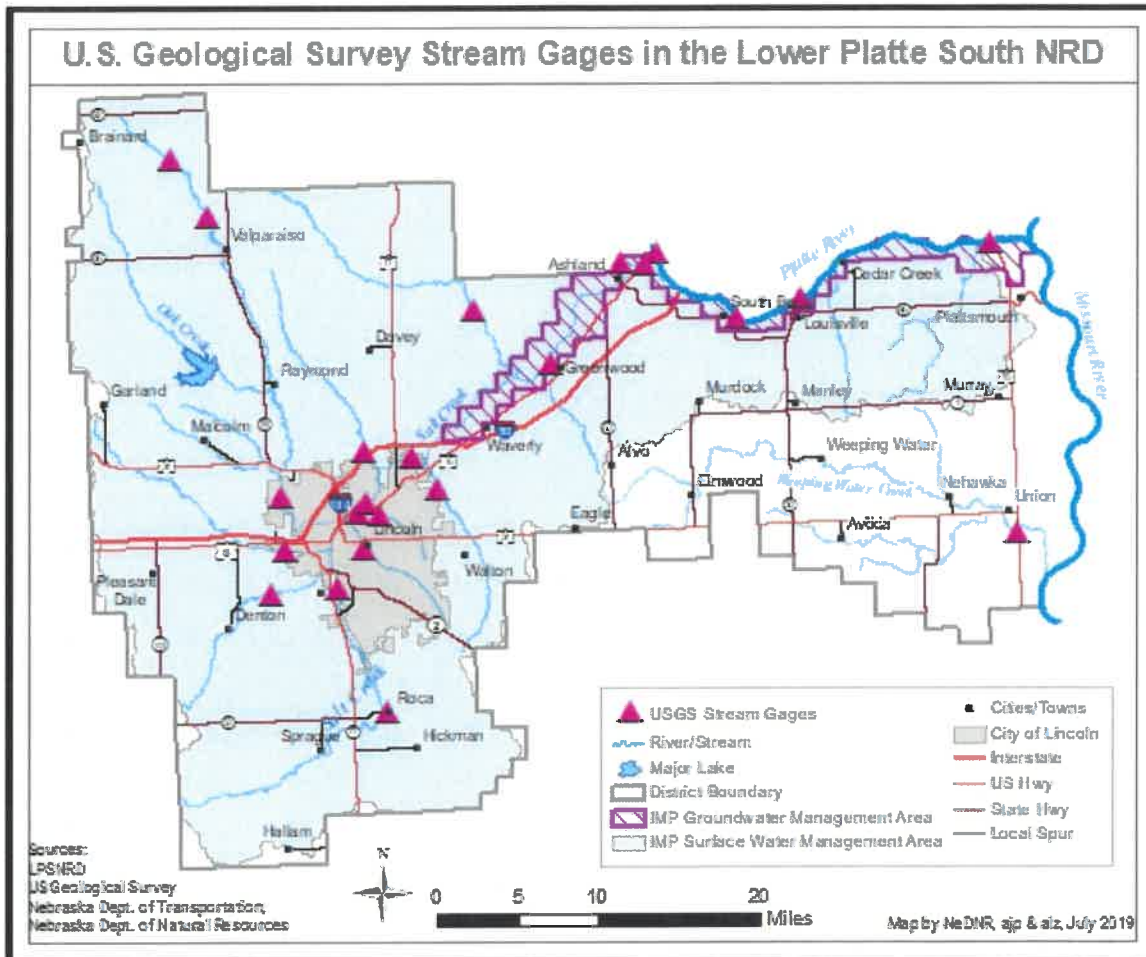


Figure 1: Location of USGS streamgages in the LPSNRD.

As a part of this report, NeDNR downloaded annual streamflow data from the USGS NWIS portal for select streamgages. These streamgages included two locations on the mainstem of the Salt Creek (Roca and Greenwood), two locations on tributaries to the Salt Creek (Little Salt Creek and Stevens Creek), and one location on the Platte River (Platte River at Louisville). These locations have long periods of record (near or over 50 years) and provide general insight to the overall water supply for a given year.

The average annual discharge over the period of record for the select streamgages is shown in the following figures (Figure 2 to Figure 6). The Platte River at Louisville recorded its highest annual average flow of 17,090 CFS per day and highest daily discharge at 219,000 CFS, due to the March 2019 flooding event.

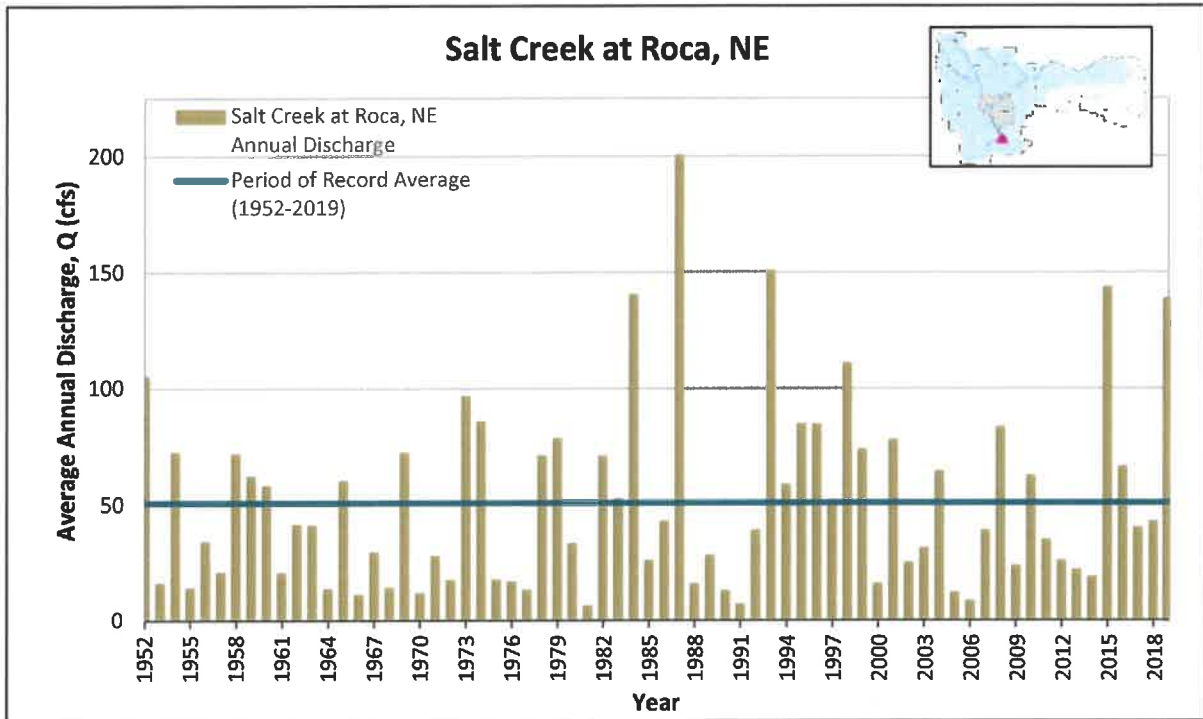


Figure 2: Historical annual discharge for Salt Creek at Roca, NE (source: USGS-NWIS. Some provisional data used).

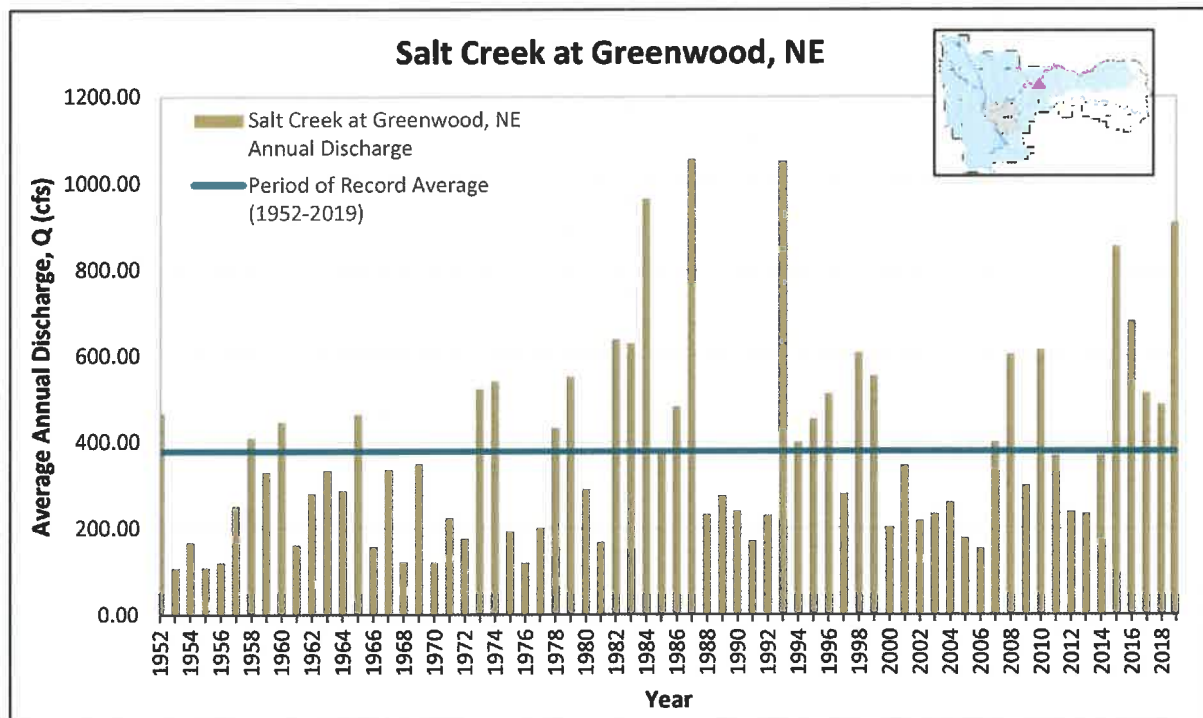


Figure 3: Historical annual discharge Salt Creek at Greenwood, NE (Source: USGS-NWIS. Some provisional data used).

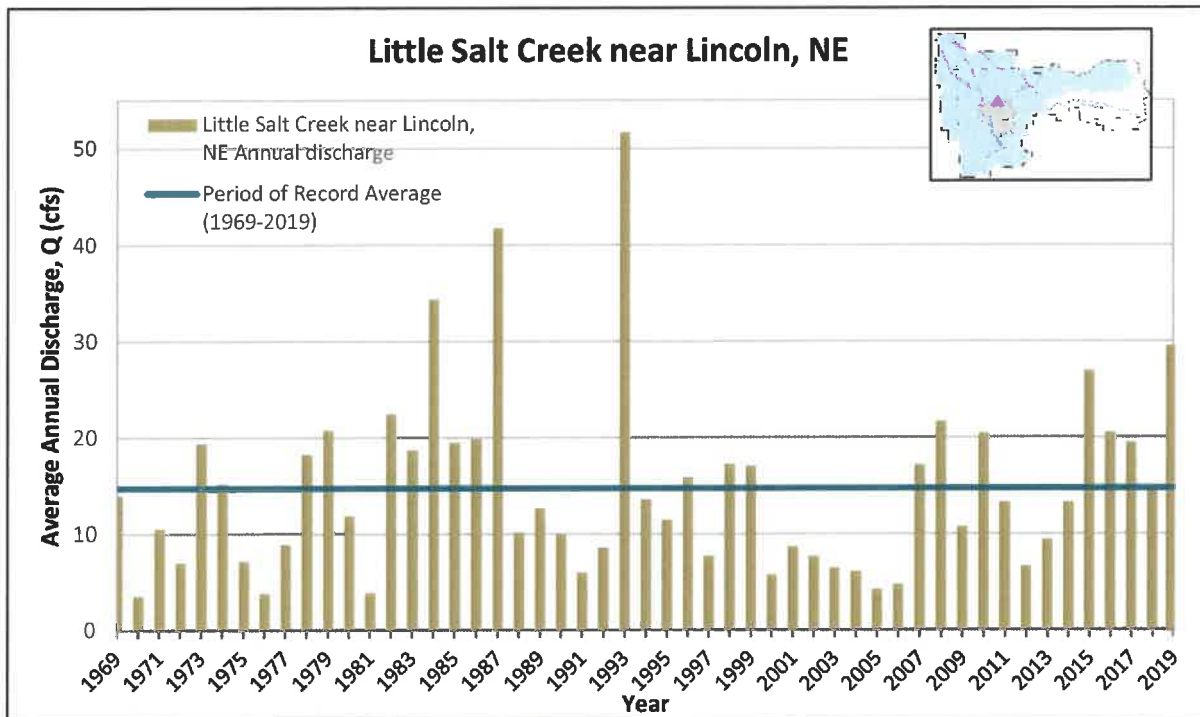


Figure 4: Historical annual discharge for Little Salt Creek near Lincoln, NE (Source: USGS-NWIS. Some provisional data used).

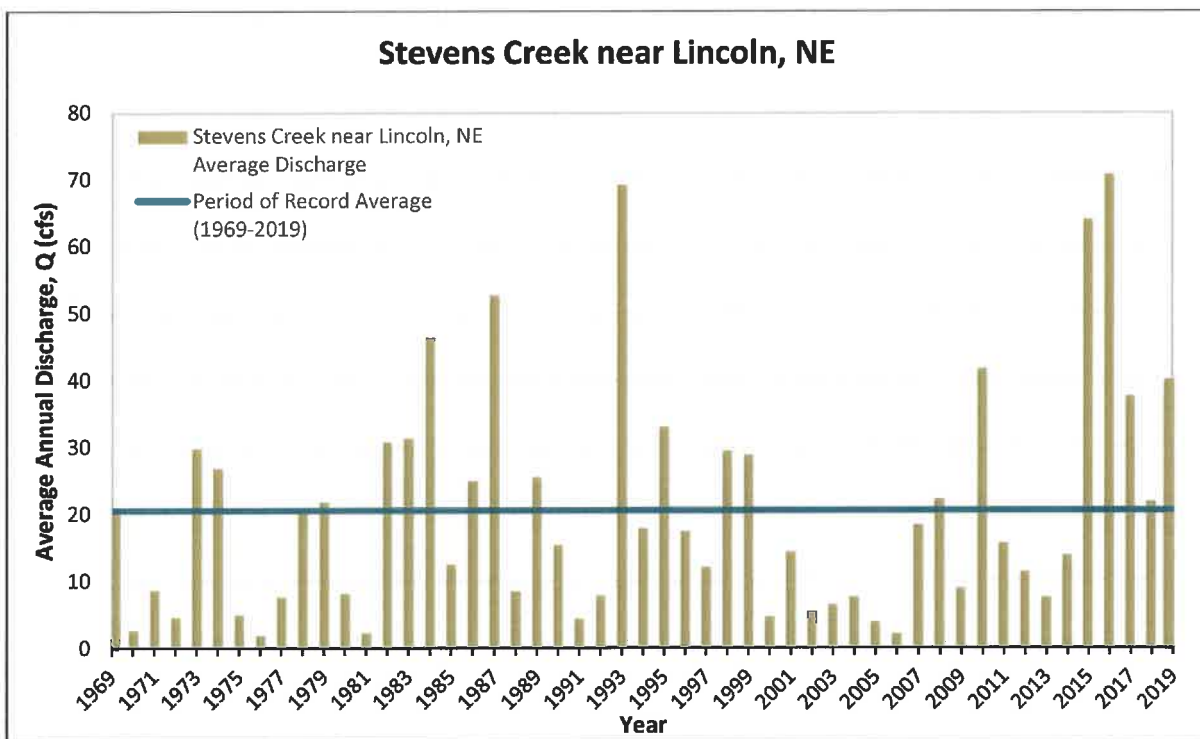


Figure 5: Historical annual discharge for Stevens Creek near Lincoln, NE (Source: USGS-NWIS. Some provisional data used).

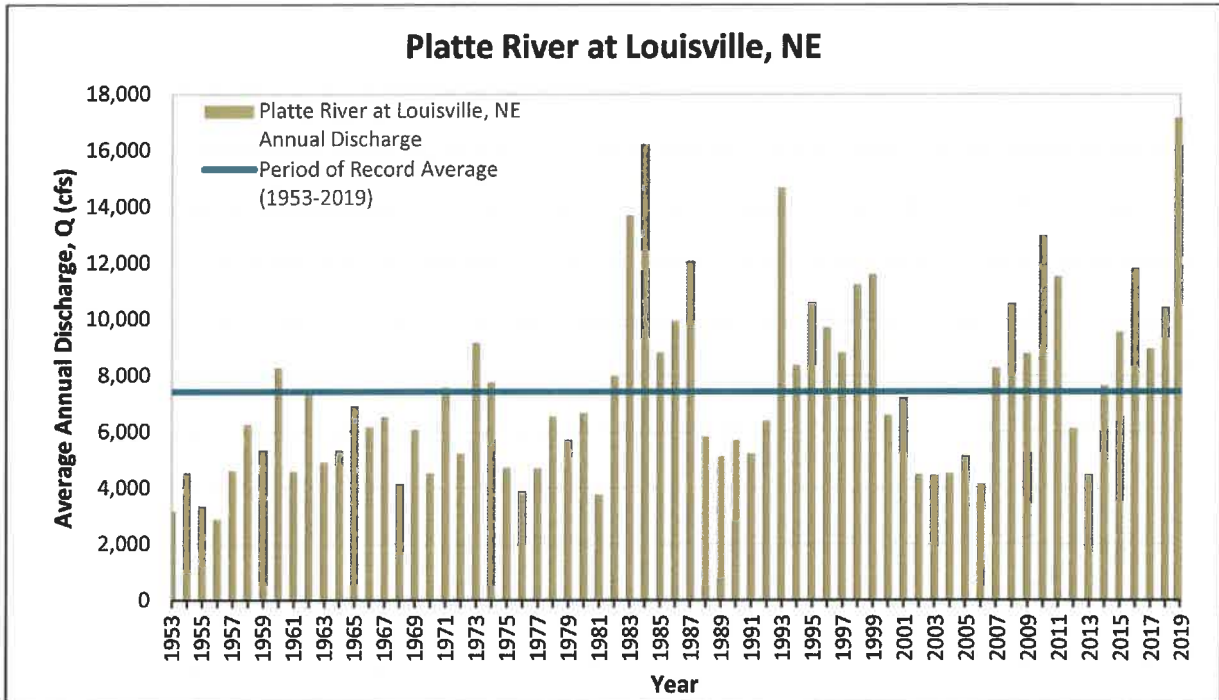


Figure 6: Historical annual discharge for the Platte River at Louisville, NE (Source: USGS-NWIS. Some provisional data used).

Surface Water Permitting Actions

NeDNR continued to monitor and administer surface water appropriations and maintain records for new, cancelled, or transferred surface water permits. Figure 7 shows the general location of the surface water permitting actions that resulted in a change in surface water irrigated acres. Table 2 provides a summary of the irrigated acres change from all surface water permitting actions in 2019.

No new surface water applications were approved in 2019 in the entire NRD. Two surface water permits were cancelled, one which resulted in 2.0 acres cancelled in the Lower Platte Basin portion of the District. Cancellations of surface water permits were due to a temporary permit to divert water for road construction expiring, and user relinquishment (Table 3). No surface water rights were transferred in 2019.

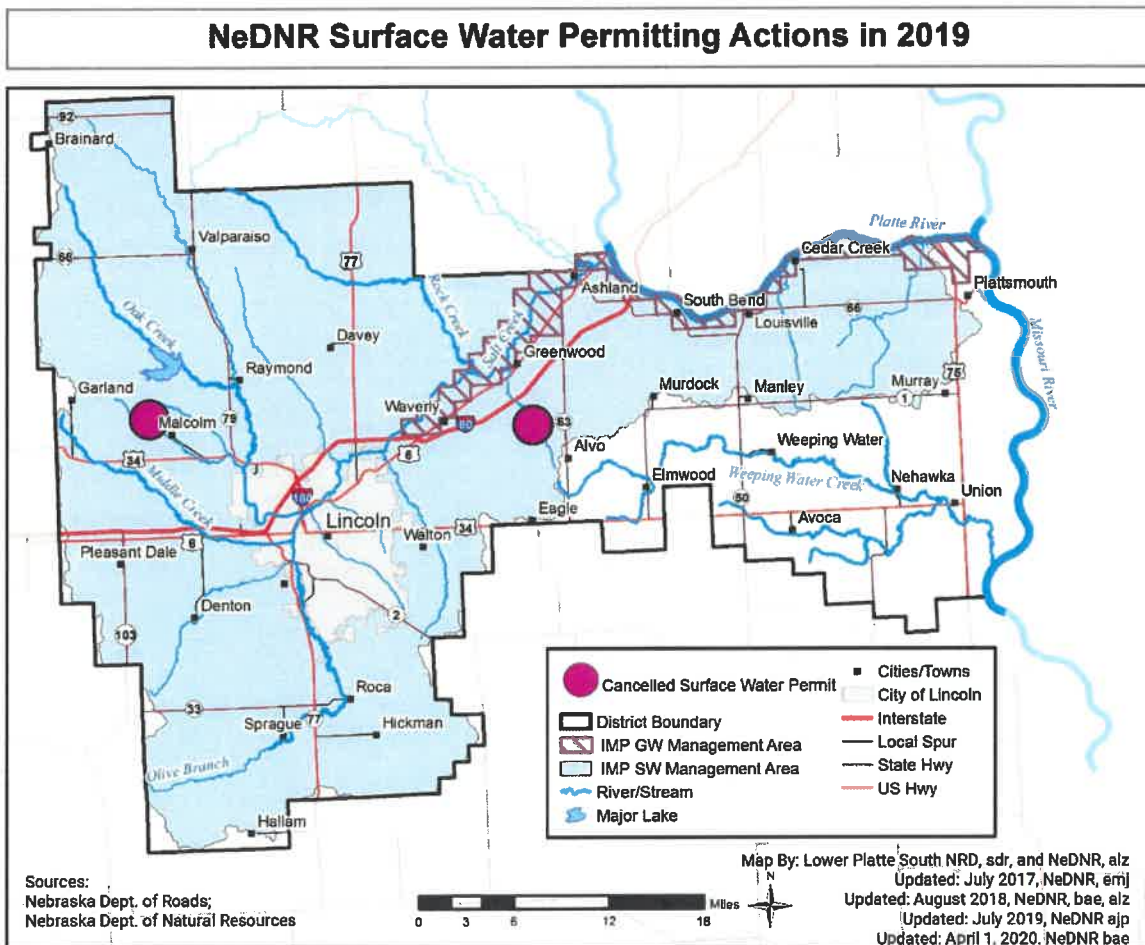


Figure 7: Map showing the location of surface water permitting actions in 2019.

Table 2: Irrigated acres changes associated with surface water permitting actions in 2019.

Irrigated Acres Changes Associated with Surface Water Permitting Actions in 2019		
Geographic Area	Newly Permitted Acres	Cancelled Acres
Lower Platte River Basin	0	2.0
Missouri River Tributaries Basin	0	0
Total (Whole NRD)	0	2.0

Table 3: Surface water permits partially or fully cancelled in 2019.

Surface Water Appropriations Cancelled in 2019							
Appropriation Number	Cancellation Date	Use	Source	NeDNR Action	Grant Cancelled	Acres Cancelled	Location of Diversion
A-11078	2/27/2019	Irrigation	Elk Creek	Cancelled in Part	0.03 cfs	2.0	S18-T11-R5E
A-19598	6/7/2019	Manufacturing ¹	Dee Creek	Cancelled in Full	10 af	NA	S21-T11-R9E

Voluntary Surface Water Use Reporting

2019 was NeDNR’s sixth year of implementing a voluntary water use reporting program in LPSNRD to estimate water use in areas where reporting is not currently required. To do this, NeDNR sent out postcards and letters to surface water irrigation permit holders within LPSNRD, inviting them to participate in the voluntary reporting program. Participants could submit information via a hardcopy form, an online form, or by calling-in to NeDNR. In 2019, 34 reports were received out of 207 potential water rights, resulting in a 16 percent response rate. This response rate is lower than the 28 and 29 percent response rates in 2018 and 2017, likely due to the excess moisture received in 2019. The 2015 and 2016 response rates were 30 percent and 22 percent, respectively.

The data collected through the voluntary water use reporting program includes information about whether a surface water permit holder irrigated that year, what types of crops were grown, and reasons for not irrigating (if applicable). In 2019, 100% of surface water appropriators who voluntarily reported on water use did not utilize their surface water permit. Figure 8 provides a graphic with general reasons for non-use of a surface water permit for irrigation. Primary reasons for non-use of a surface water permit in 2019 were adequate precipitation (67%) and land use change from cropland (12%). Other reasons for non-use were flooding (6%), no equipment set up to irrigate (6%), and not economical to irrigate (6%).

¹ A-19598 was a temporary permit to divert water for road construction and has expired

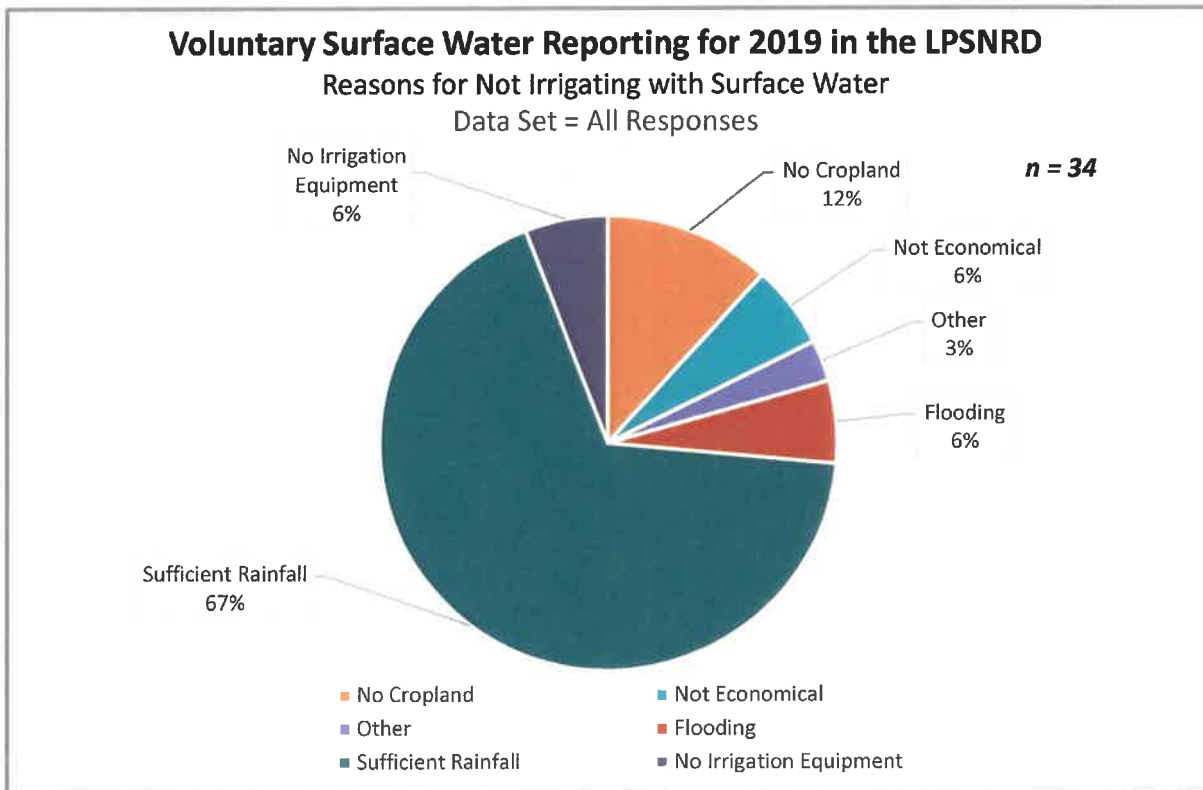


Figure 8: Graphic showing general reasons for non-use of surface water permits in 2019.

Surface Water Pump-Site Visits

The NeDNR Field Office staff has been conducting surface water pump-site inspections across Nebraska for the past six years. Pump-site inspections complement the voluntary water use reporting program and provide further information about surface water use. It is the goal of the field office staff to inspect each pump site at least once every two years.

In 2019, 140 surface water pump-sites in LPSNRD (68%), out of 207 total, were inspected by NeDNR Field Office staff. Twenty-five pumpsites were set up at the time of inspection and three of those pumps were running at the time of inspection. The number of possible pumpsites is fewer than the number of water rights due to the possibility that multiple rights may be utilizing one pump.

Groundwater Monitoring

IMP Groundwater Management Area

There are a total of 397 wells in the Hydrologically Connected Area (HCA). Flow measurement meters and water use reports are required for any well with the capacity to pump 50 gallons per minute or greater. Of these, there are 28 irrigation wells, 5 commercial wells, and 3 other wells which, when combined, account for 574 million gallons of groundwater pumped (Figure 9). Also in the HCA area, there are 214 registered domestic wells, and 70 registered public water supply wells. (Figure 10). Municipal water wells in the HCA include wells for Waverly, Ashland, Louisville, Lincoln, Metropolitan Utilities District, Omaha Fish & Wildlife Club, Cass SID #5, and Cass Rural Water District #1.

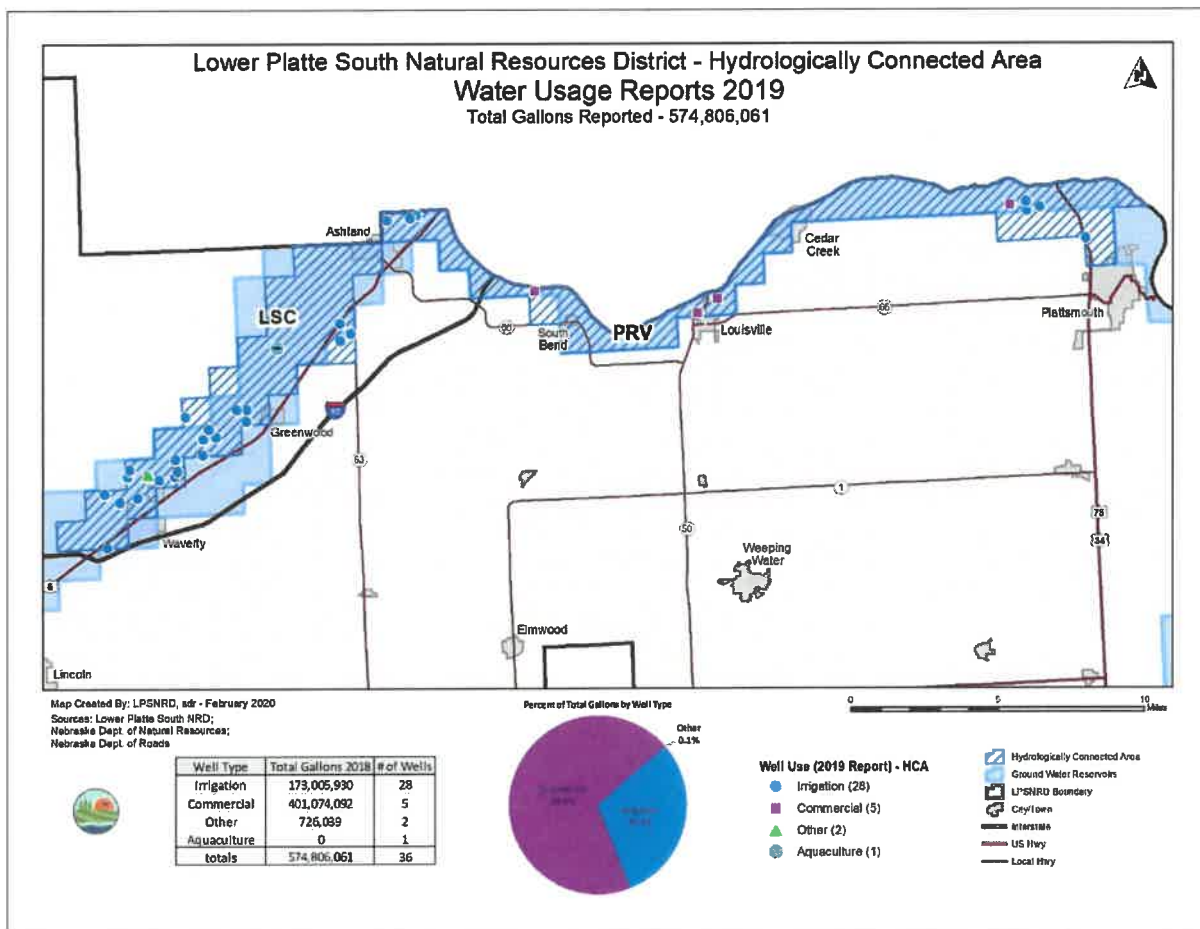


Figure 9: Groundwater use in the hydrologically connected area (HCA) of LPSNRD.

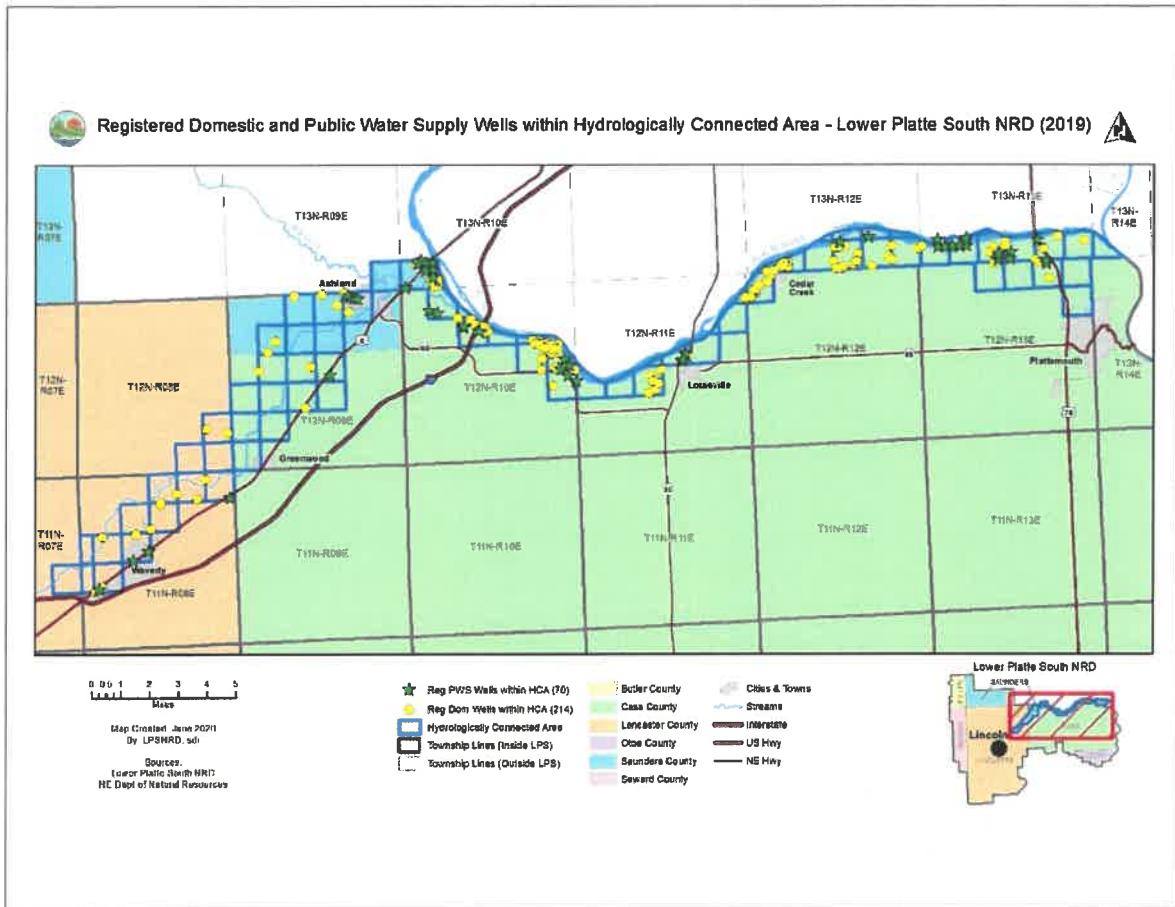


Figure 10: Registered domestic and public supply wells in the hydrologically connected area (HCA) of LPSNRD.

Metering and Groundwater Level Monitoring

All wells with capacity to pump over 50 gallons per minute (gpm) are metered, which numbered 418 in LPSNRD at the close of 2019. LPSNRD collected records of usage from these wells and all public supply wells. The calculated total pumping for 2019 from these metered wells was 2.5 billion gallons, with 268 irrigation wells accounting for 53.33 percent of the total measured pumping. This total pumping volume did not include the public supply wells. In addition, LPSNRD inspected and read 126 groundwater well meters during 2019.

LPSNRD also collected groundwater level data from 138 wells in the spring and fall of 2019 and 128 of those wells are part of LPSNRD’s official water level network. Of those, 123 wells showed an increase and 5 wells showed a decline from spring 2018 to spring 2019; the maximum decline was 1.75 feet while the maximum increase was 12.29 feet, with an average static water level increase of 1.62 feet. Figure 11 shows a spatial representation of groundwater level changes. The average change by groundwater reservoir is shown in Table 4: Average well level change by groundwater reservoir, spring 2018 to spring 2019..

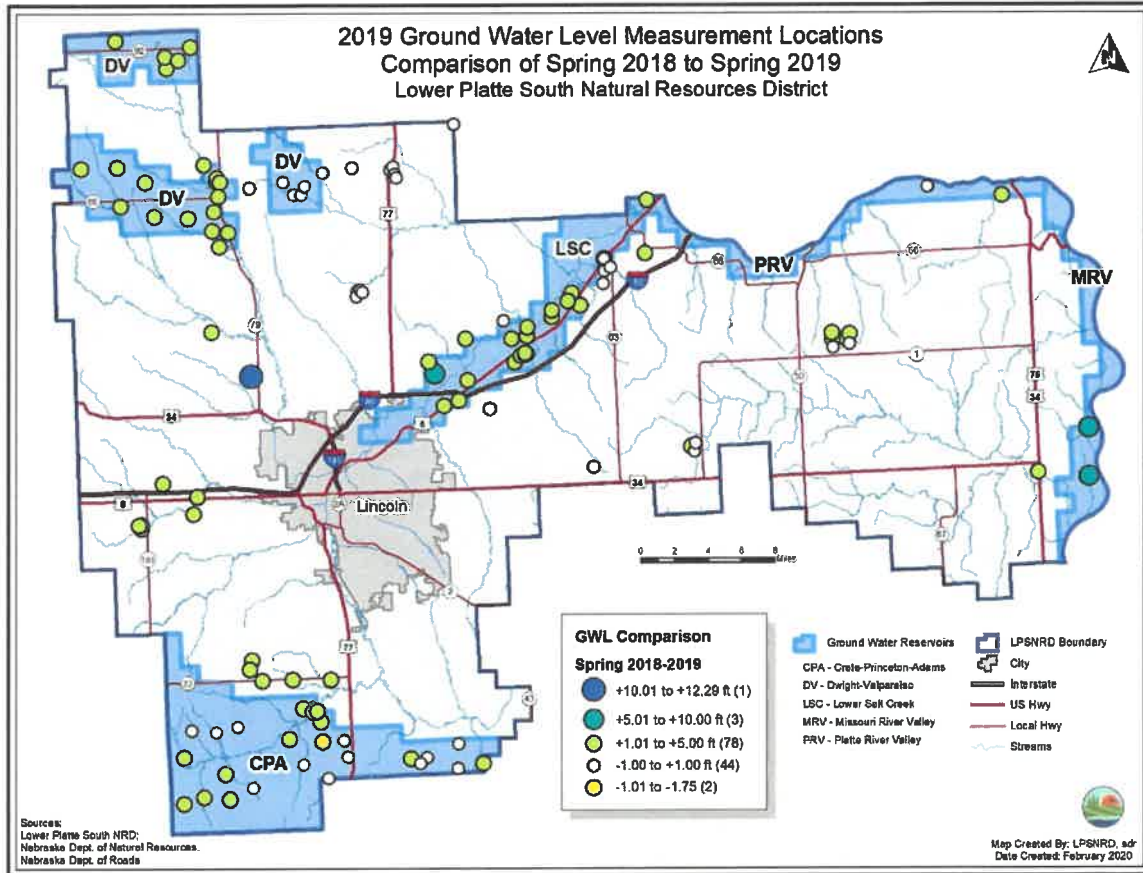


Figure 11: 2019 groundwater level comparison of spring 2018 to spring 2019 measurements.

Table 4: Average well level change by groundwater reservoir, spring 2018 to spring 2019.

Average Well Level Change by Groundwater Reservoir	
GW Reservoir	Spring '18 to Spring '19 (ft)
Crete-Princeton-Adams	1.38
Dwight-Valparaiso	1.99
Lower Salt Creek	1.64
Missouri River Valley	7.1
Platte River Valley	1.47
Remaining Area	1.39

Groundwater Permitting Activities

LPSNRD issued 7 well permits in 2019 for varied uses, as reported in Table 5, and the locations of which are shown in Figure 12. Figure 13 shows the permitting activities for the hydrologically connected area; there, no water well permits were completed in 2019. All statutory well-spacing minimum requirements were followed for all new and replacement wells.

Table 5: LPSNRD approved or completed groundwater wells in 2019.

Approved GW Well Permits in 2019	Number of Permits	Completed wells in 2019	
Irrigation	4		1
Commercial	0	From 2018 Permits	1
Domestic	0		0
Geothermal	0		0
Livestock	3		1
Other	0		0
Total	7	Total	3

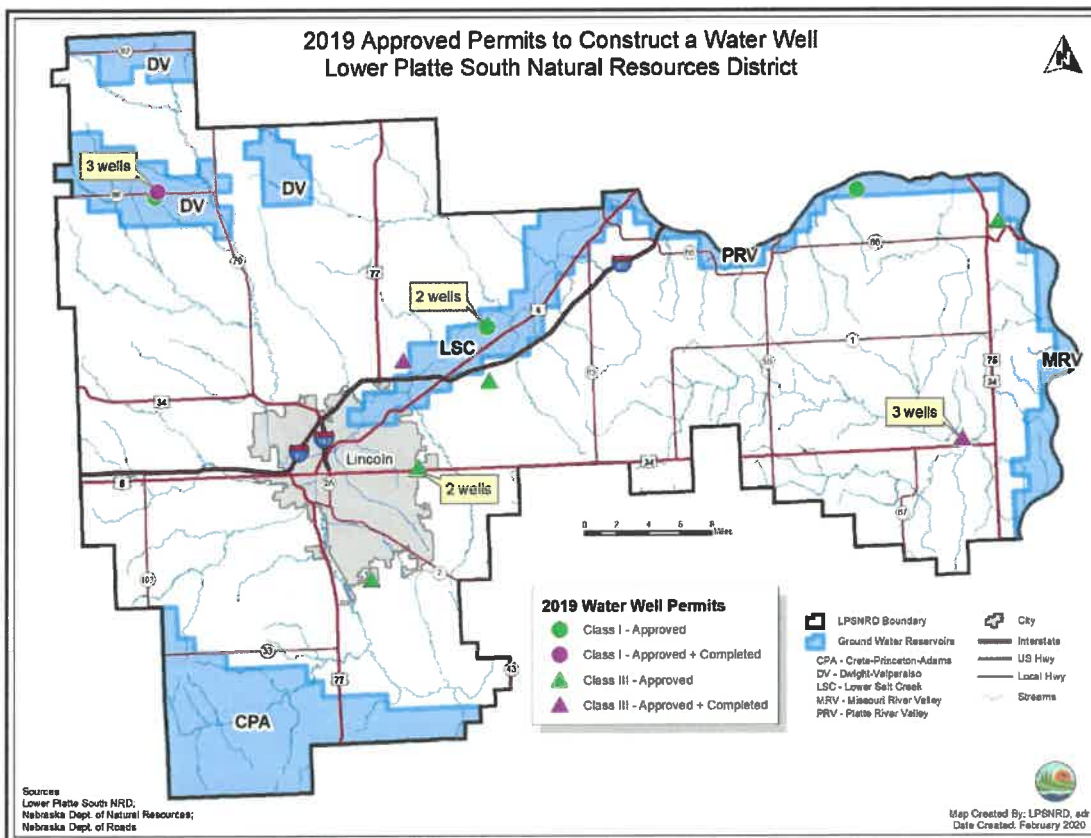


Figure 12: LPSNRD groundwater well permits approved or completed in 2019.

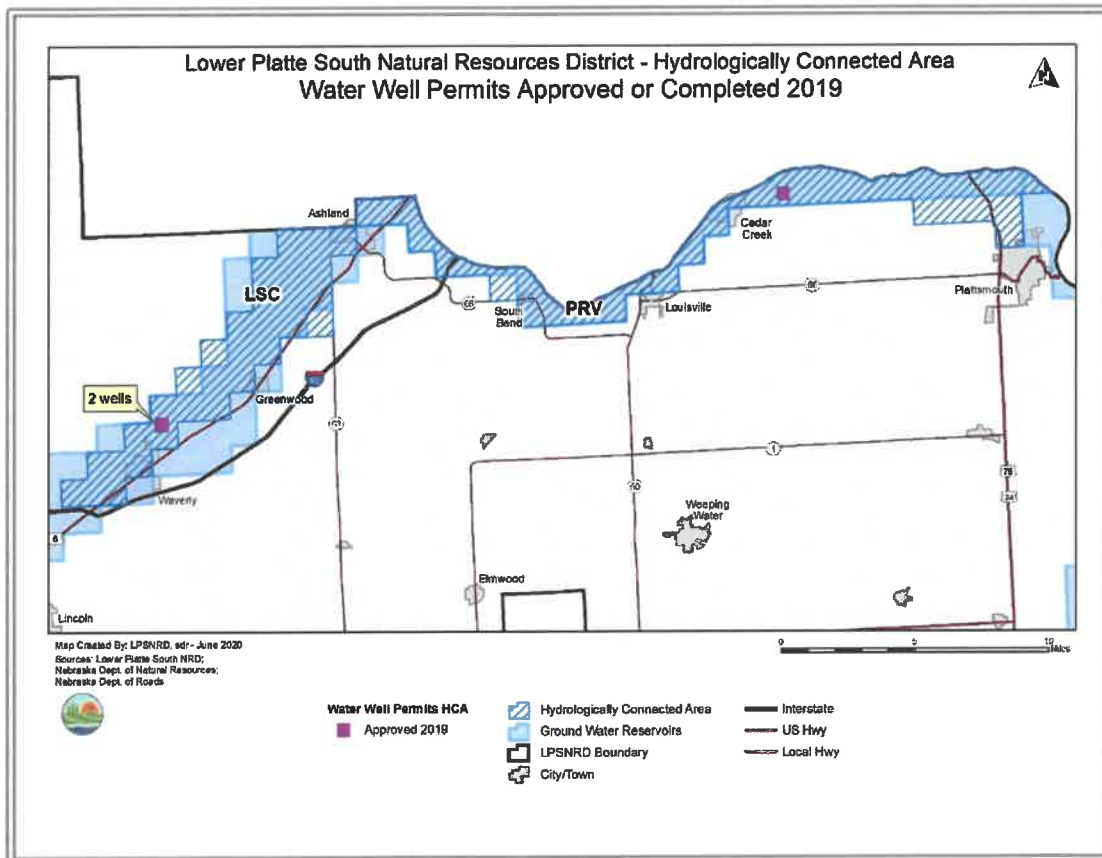


Figure 13: Three LPSNRD groundwater well permit were approved in the HCA in 2019.

Land Use and Land Cover (LULC) Monitoring and Actions

In 2019, LPSNRD did not certify any additional groundwater irrigated acres within the HCA. As specified in the IMP, newly certified groundwater irrigated acres within the HCA did not exceed 20 percent (593 acres) of the total certified groundwater irrigated acres in the same area. The total number of certified acres in the HCA is 3,268 and the extent of these acres is shown in Figure 14. In the remainder of LPSNRD, an additional 186.81 groundwater irrigated acres were certified in 2019, for a total of 27,843.59 acres district-wide. The district-wide extent of certified acres is shown in Figure 15. There were no requests for variances in 2019.

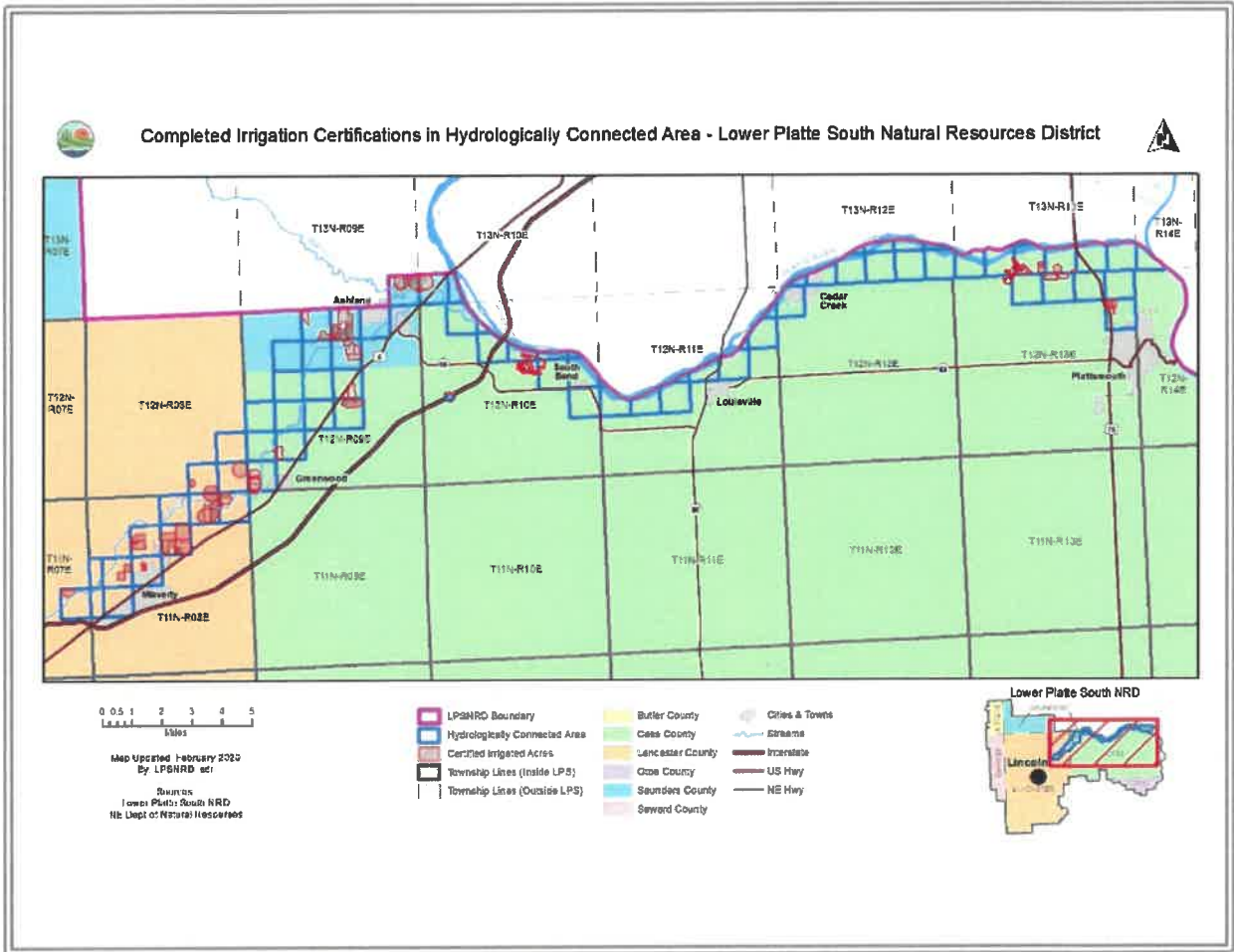


Figure 14: 2019 HCA certified groundwater irrigated acres.

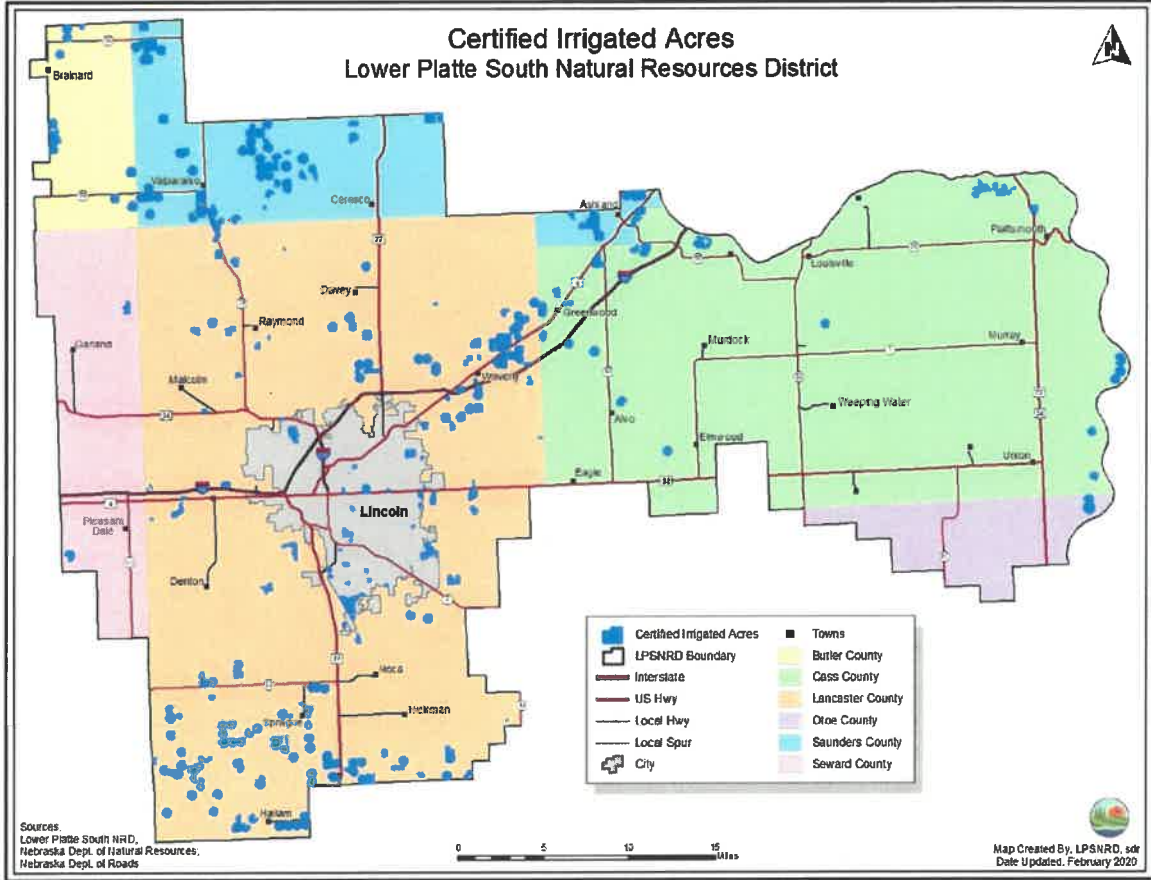


Figure 15: 2019 District-wide certified groundwater irrigated acres.

2019 IMP Regulatory Actions

LPSNRD Groundwater Acres Limitations

An annual limitation of 593 additional certified irrigated acres continues to be in place on hydrologically connected areas within the LPSNRD. A temporary moratorium on the Dwight-Valparaiso area was lifted in 2014 following designation of Dwight-Valparaiso-Brainard Special Management Area (Figure 12), but a rule to not allow an increase in irrigated acres and pumping allocations for irrigated land continues to be in effect.

NeDNR Surface Water Acres Limitations

Pursuant to the IMP, NeDNR sets its surface water limitations to 1/3 the amount of acres that the LPSNRD allows for new groundwater irrigated acres, as of January 1 for each year. A limit of 198 surface water acres has and continues to be in place for the surface water management area in LPSNRD. This limit has remained consistent since the IMP was adopted, as the LPSNRD groundwater acres limit (593 acres) has stayed consistent throughout this time.

Future limits on water use

The LPSNRD and NeDNR have been and will continue to hold discussions about the method of limiting water development, in light of the adoption of the Lower Platte Basin Water Management Plan (Basin Plan). The Basin Plan has established limits on new water development basin-wide and by individual NRD for a five-year increment that ends in 2021; these limits are based on stream depletions rather than irrigated acres limitations. The LPSNRD and NeDNR will continue to work together to ensure compliance with the Basin Plan, as well as assess the need to incorporate new language in the IMP to be consistent with the Basin Plan.

Studies and Planning

The following studies were continued or completed recently by the LPSNRD and NeDNR, to gather and evaluate data, information, and methodologies that could be used to increase understanding of the surface water and groundwater supplies and uses within, and, as appropriate, outside LPSNRD. These studies help to meet the goals and objectives that were developed through the IMP stakeholder process.

Additional IMP Components

In 2014, LPSNRD retained HDR, Inc. to provide professional services to address the following additional components for the IMP. These specific IMP components were completed in 2015 and will be added to the IMP. In general, the tasks were to develop:

- A process to collect and record water use data from all municipalities and rural water districts and from all major non-municipal industrial water users. (LPSNRD IMP, Chapter 7: I(e)(i) and I(f)(i), page 8),
- Procedures to track depletions and gains to streamflows resulting from new, retired, or other changes to water uses within LPSNRD. (LPSNRD IMP, Chapter 8: II(d), page 11),
- An Emergency Response/Drought Mitigation Plan, which included holding a Drought Tournament, in which 30 stakeholders participated. (LPSNRD IMP, Chapter 7: V(a), page 11).

LPSNRD contracted with HDR, Inc. again in 2016 to perform additional services associated with LPSNRD's IMP Planning Components. The purpose of the project was to build on the planning components provided in the LPSNRD IMP Planning Components Methodology Report, finalized in November 2015. This amendment is used for developing and completing tools and recommendations from the original contract for use by the LPSNRD to help implement the IMP. These will continue to help LPSNRD to observe, quantify, and manage the water resources within LPSNRD's boundary. Specifically, the methodologies developed as part of this project include the following:

- Implement the GIS database recommendations made during the first phase of the project,
- Review and analyze drought response plans of the public water suppliers within LPSNRD,
- Research conservation programs for water use management, and
- Develop science-based protocols for estimating unmeasured water uses.

In addition, LPSNRD and NeDNR partnered with Lower Platte North NRD, Papio-Missouri River NRD, Metropolitan Utilities Department (MUD), and the Lincoln Water System (LWS) to form the Lower Platte River Consortium (LPRC) in 2016. The Consortium contracted with HDR, Inc. to develop a Drought Contingency Plan. The primary focus of the plan will be to further refine the Consortium's collective understanding of drought vulnerabilities while developing more robust monitoring and forecasting tools coupled with timely triggers, new mitigation strategies and responsive actions to create a sound operational framework, and improve critical water supply needs of the area through drought periods. The planning area includes the Lower Platte River

upstream of the Platte River at Louisville and downstream of the Platte River at Duncan. This Plan was completed in October 2019.

Stream Accretion and Depletion Calculator Expansion

NeDNR has expanded the stream accretions/depletions calculator to the Lower Platte River Basin. The calculator utilizes stream depletion factors derived from NeDNR's Lower Platte Missouri Tributaries model and CENEB model. The calculator allows users to calculate consumptive use resulting from land use changes and estimate the impacts to streamflow as a result of the land use change. This provides a uniform platform for tracking water use changes and estimating streamflow and consumptive use impacts within the Lower Platte River Basin.

Lower Platte Missouri Tributaries Model Development

NeDNR has completed the development of a regional numerical groundwater model for the Lower Platte and northern Missouri River Tributaries basins (i.e. "Northern Model") (Figure 16). The model may be used for future updates to NeDNR's Annual Evaluation of Availability of Hydrologically Connected Water Supplies. A future refinement to this model is being considered as the Lower Platte Basin NRDs discuss how AEM data will be incorporated into this model. The first step in evaluation of the AEM data for use in the model is occurring through a study with the Lower Elkhorn NRD. The first phase of this work with the Lower Elkhorn NRD concluded in FY 2019 and the second phase was initiated in early FY 2020 and will continue through FY 2021.

Once work on the northern portion of the model concludes, NeDNR will continue development of the southern portion of the model (Nemaha Model) (Figure 16). Upon completion, the Nemaha model will also be incorporated into the INSIGHT and FAB analyses. NeDNR will also continue to support efforts of ENWRA to evaluate whether the coupling of groundwater modeling tools and airborne geophysical studies will help improve understanding of hydrologic connections between aquifers and streams.

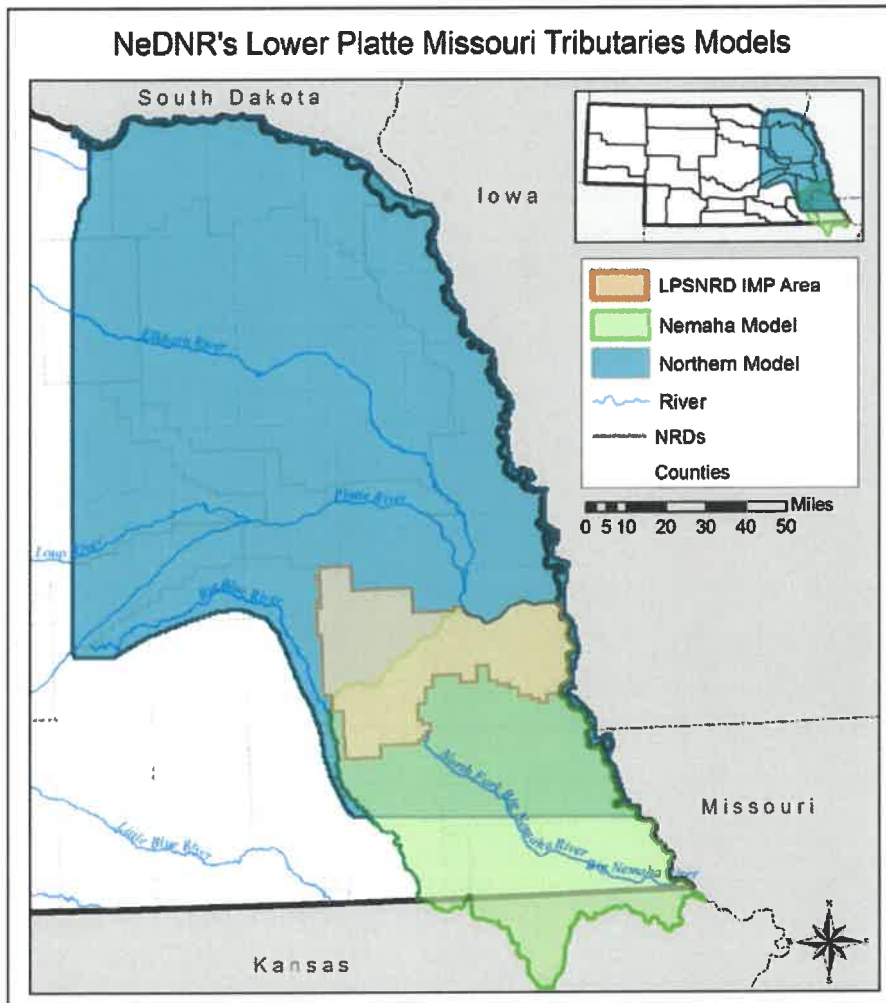


Figure 16: Geographic areas of the Lower Platte and Missouri Tributaries models.

Water Inventory and Water Use/Supply Management

LPSNRD Accomplishments

LPSNRD has continued collection and sharing of data and has worked to improve the database that houses this information. LPSNRD further reviewed groundwater well permits relative to aquifer capacity and sustainability. LPSNRD also continued the open dialogue with public water suppliers on current and future water supplies and supported storm water capture and reuse projects in the district. LPSNRD previously contracted with JEO to conduct a preliminary study on alternatives and estimated costs to provide a potable water supply to the Interstate 80-Exit 426 interchange area in Cass County, supplied by the City of Ashland wellfield. There has been additional discussion regarding a similar study at the Interstate 80-Exit 420 interchange area. LPSNRD has continued to participate with the Lower Platte River Weed Authority and the Lancaster County Weed Authority on invasive species control relative to water supply.

NeDNR's INSIGHT Web Portal

The Integrated Network of Scientific Information and Geohydrologic Tools (INSIGHT) web portal at <https://nednr.nebraska.gov/INSIGHT/> is a water use, supply, and balance tool that was developed by NeDNR and was released in 2014. INSIGHT aids water managers and other interested parties in better understanding current and future water demands, effectiveness of water management strategies, and critical areas of water shortage. The user can access information pertaining to water supplies and demands (precipitation, irrigation, hydropower, etc.), as well as view maps with associated charts that show overall water balance (current, near-term, or long-term) at a subbasin scale. A valuable feature of INSIGHT is that all the datasets that are used to compile the water balance analyses are also stored within the web portal and are available for download.

NeDNR will continue to update the current INSIGHT analysis and add other basins to the web portal as new data become available. At this time, NeDNR has compiled data for the Lower Platte River, from North Bend, NE, to Louisville, NE, which covers a large portion of the LPSNRD IMP area. It does not include the portion of LPSNRD that is a part of the Nemaha River Basin, but this area will be added to INSIGHT subsequent to the completion of the Lower Platte Missouri Tributaries models. The last major update for INSIGHT was the addition of data for the Upper Platte River Basin in 2019.

Education/Outreach

NeDNR Activities

Events

NeDNR's statewide public outreach activities are broadly focused and intended to provide all interested citizens with a better understanding of how integrated water management affects them. In 2019, NeDNR participated in the following statewide or regional events:

- Husker Harvest Days,
- Nebraska State Fair,
- Nebraska Women in Agriculture conference,
- Nebraska Association of Resource Districts conferences,
- Nebraska State Irrigation Association/Nebraska Water Resources Association joint convention, and
- American Water Resources Association regional conference.

In 2019, NeDNR also engaged with stakeholders and local partnering agencies at the following community events:

- Various, locally-sponsored water tours, and
- World O! Water in Papillion.

Educational Interactive Web Applications

In 2018, NeDNR released the second application in a series of new educational applications, called Stream Simulations (Figure 17). This interactive application illustrates the relationship between groundwater pumping and stream depletions under different hydrologic systems—a gaining stream, a losing stream, and a disconnected stream—as well as how pumping can change the connectivity of a stream to its adjacent aquifer. Depending on which simulation they are exploring, users can change well location or pumping intensity. The application also features a tutorial and optional voice narration. Also in 2018, NeDNR updated and added some additional features to the first application in the Stream Simulations series, which introduces users to basic interactions between surface water and groundwater, such as how water flows between a stream and an adjacent aquifer and how precipitation and soil texture affect runoff, recharge, and streamflow.

Both applications can be accessed on NeDNR's website, at <https://dnr.nebraska.gov/water-planning/education>. There is also an offline, portable version of each application that NeDNR takes to public outreach events. NeDNR will provide a copy of the offline version to an NRD for its own outreach use upon request.

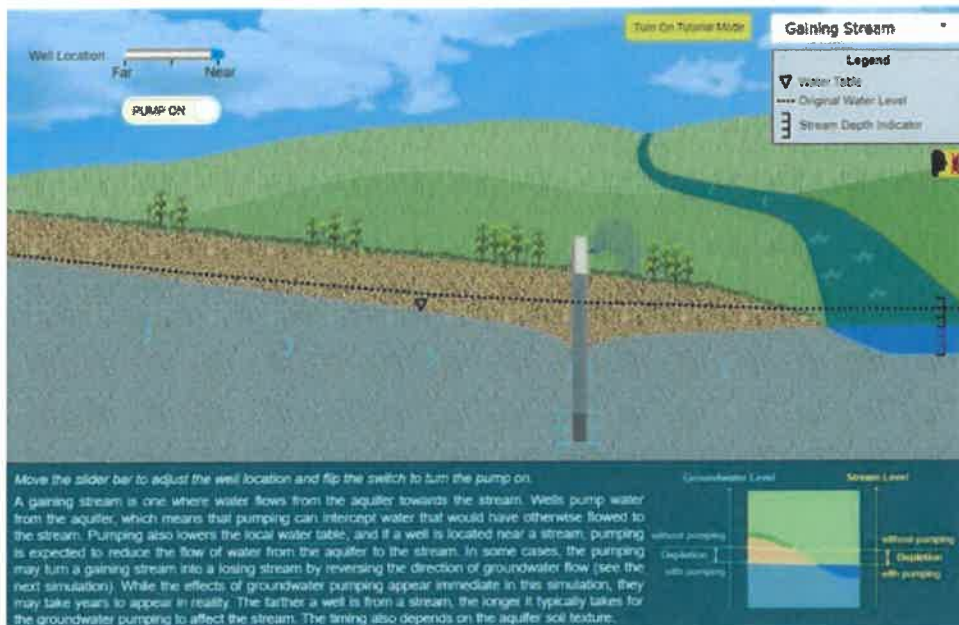


Figure 17: Screenshot of NeDNR's educational interactive web applications.

LPSNRD Activities

Each February, LPSNRD compiles a Ground Water Management Plan Review; a report of all groundwater activities completed in the previous calendar year. The report includes results of well sampling and measuring, progress made in ongoing groundwater programs, the status of each groundwater management area, and more. The review is presented as a summary to the LPSNRD Board of Directors and the complete review is posted on LPSNRD's website, <http://www.lpsnrd.org>. The posted review is promoted on the LPSNRD website home page and in LPSNRD's newsletter.

As noted on the following page under Collaboration with Other Entities, LPSNRD has completed a collection of airborne electromagnetic (AEM) data for the NRD. Information and reports on the AEM flights can be accessed and downloaded from the Eastern Nebraska Water Resources Assessment (ENWRA) website at www.enwra.org/aem2016.html.

The NRD has continued to host "Test Your Well Nights" events for specific areas each year. Private well owners are able to bring water samples in to be tested for nitrates and LPSNRD worked with local FFA chapters and science students to test the water.

The LPSNRD worked with UNL Extension to implement a Certification Program for irrigators and continued to provide cost-share and educational support for irrigation best management practices.

LPSNRD also promoted its groundwater activities through social media platforms Instagram and Facebook. Information was shared about groundwater levels, samples, data loggers, and monitoring wells.

The stakeholder advisory group for the Dwight-Valparaiso-Brainard Special Management Area (DVB) was kept updated on DVB activities. The group held annual meetings in December 2014, January 2016, March 2017, and in March 2018, where they were updated by LPSNRD staff and contributed their own input. The group also met back in February 2015 to be updated on aerial electromagnetic imaging activity in DVB.

LPSNRD continually seeks to maintain public awareness to information about groundwater levels, available cost-sharing and conservation best management practices through its publications, website, and through LPSNRD media.

Collaboration with Other Entities

Eastern Nebraska Water Resources Assessment

Both LPSNRD and NeDNR participated in the Eastern Nebraska Water Resources Assessment (ENWRA) program in 2019 to cooperate on hydrogeologic data research and modeling. ENWRA's participants include six NRDs in eastern Nebraska and NeDNR. As a part of that study effort, LPSNRD continued both the interlocal cooperative agreement with ENWRA and the Water Sustainability Fund (WSF) contract no. 5189 with NeDNR for additional helicopter based-geophysical remote sensing, termed Airborne Electromagnetic Survey (AEM), to determine aquifer locations and thicknesses.

LPSNRD has continued to cooperate with the other ENWRA NRDs on the \$1.968 million WSF application no. 5189 project award to further the AEM mapping of eastern Nebraska. Through the award allocations LPSNRD received \$510,000 of these WSF funds and budgeted \$340,000 of its own funds to complete the AEM data collection efforts in LPSNRD. This final effort collected AEM data over the western portion of the LPSNRD, and concentrated on Community Water System Protection Areas (CWSPAs) for the communities of Ceresco, Davey, Raymond, Malcolm, Emerald, Garland, Pleasant Dale, and Denton. Additional grid transect flights provided data on the rural areas of the western portion of LPSNRD, especially the areas around Branched Oak and Pawnee Lakes, where residential acreage development is increasing. The final report for the 2018 AEM flights in LPSNRD was completed in December 2019 and is now available from the ENWRA website at <https://www.enwra.org/aem2018.html>.

Lower Platte River Basin Coalition

Both the LPSNRD and NeDNR are active participants in the Lower Platte River Basin Coalition (LPRBC), a group comprised of the seven Lower Platte River Basin NRDs and NeDNR. The purpose of this group was to develop, and now implement, a voluntary water management plan for the Lower Platte River Basin. Plan components are subsequently be incorporated into individual IMPs to provide consistency in water management actions across NRD boundaries. Both NeDNR and LPSNRD have representatives that serve on the managers and technical committees. For more information about the Coalition, please see <https://lprbc.nebraska.gov/>.

Lower Platte River Consortium

LPSNRD and NeDNR are participating members of the Lower Platte River Consortium (LPRC). The LPRC was formed through an interlocal agreement in 2016 and also includes Lower Platte North NRD, Papio-Missouri River, MUD, and LWS as members. The Consortium is working together to develop regional solutions to improve the water supply reliability and drought resiliency of the Lower Platte River.

The Lower Platte River Drought Contingency Plan (LPRDCP) is a collaborative project among these six water management agencies, along with the Bureau of Reclamation. The LPRDCP had been submitted to the Bureau of Reclamation for review and was finalized in October 2019. The LPRDCP will analyze the available water in the area and develop a plan to retain or acquire water

for this part of the state and its population in years of drought.

Lower Platte River Corridor Alliance

Both the LPSNRD and NeDNR are active members of the Lower Platte River Corridor Alliance (LPRCA), which is a group comprised of the eight agencies, including the LPSNRD, Papio-Missouri River NRD, NeDNR, Nebraska Department of Environment and Energy, Nebraska Department of Health and Human Services, Nebraska Game and Parks Commission, Nebraska State Military Department, and the University of Nebraska Institute of Agriculture and Natural Resources. The LPRCA is dedicated to working with people to protect the long-term vitality of the Lower Platte River Corridor. The mission of the LPRCA is to foster the development and implementation of locally-drawn strategies, actions, and practices to protect, enhance, and restore the vitality of the Lower Platte River's resources. Created in 1996 through an interlocal agreement, the Alliance uses a variety of "tools" to assist counties, communities, governments, resource management organizations, and the general public to meet Lower Platte River Corridor management challenges. These "tools" include public awareness events, educational workshops, recreation studies, water quality studies, floodplain studies, land-use planning assistance, and a variety of other projects. For more information about the LPRCA, please see www.lowerplatte.org.

Other Collaborations

The LPSNRD cooperated with the USGS on collection of surface water/streamflow data. In 2015, LPSNRD staff initiated contact with USGS personnel to begin identification of new streamgage locations in the Oak Creek drainage of the Dwight-Valparaiso-Brainard Special Management Area, and two new gages were installed in 2016 near the village of Valparaiso and the unincorporated community of Touhy. This effort utilized the AEM data from 2013, and will ultimately be aimed at further defining the relationship between groundwater and surface water in this area. The LPSNRD also cooperated with UNL, USGS, adjoining NRDs, and NeDNR on groundwater data sharing.

Jointly Identified Actions for Succeeding Two Years

As stated in the IMP, LPSNRD and NeDNR will jointly identify action steps for the succeeding two years as a part of annual reviews. The following actions were identified by the LPSNRD and NeDNR as priorities for the next two years. These actions will help ensure that progress is continued towards meeting the goals and objectives of the IMP.

1. Continue to participate in basin-wide or regional groups such as ENWRA, the Lower Platte River Consortium, Lower Platte River Basin Coalition, and the Lower Platte River Corridor Alliance. (LPSNRD and NeDNR)
2. Continue to assess the need to amend the IMP to achieve consistency with the Lower Platte Basin Water Management Plan, specifically with stream depletion-based limits on new groundwater and surface water uses. (LPSNRD and NeDNR)
3. Continue respective public outreach activities and participate in one joint public outreach activity per year, as time and resources permit. (LPSNRD and NeDNR)
4. Continue to evaluate the need for modifications to the LPSNRD streamgauge network. (LPSNRD and NeDNR)
5. Conduct quarterly coordination meetings with LPSNRD and NeDNR staff to discuss IMP and related action items. Include the LPSNRD Integrated Management Subcommittee members on coordination meetings twice per year (LPSNRD and NeDNR)
6. Continue to monitor groundwater level changes through its network of groundwater monitoring wells. (LPSNRD)
7. Continue to meter and require annual pumping reports for groundwater wells that have capacity to pump over 50 gpm, as well as public supply wells, and assimilate the data into a comprehensive dataset. (LPSNRD)
8. Continue to collect information on municipal, rural water, and non-municipal industrial water use, land use and population changes, and changes in climate. (LPSNRD)
9. Develop recommendations for the development and management of geographic areas with limited aquifers. (LPSNRD)
10. Conduct discussions with municipalities and rural water districts on coordinating services with regional systems and on water shortage action plans. (LPSNRD)
11. Continue surface water monitoring activities including tracking surface water permit changes, pumpsite inspections and the voluntary surface water use reporting program. (NeDNR)
12. Continue technical analyses and development of tools (INSIGHT, SUSTAIN) for water management, expanding the network to eastern Nebraska as data become available. (NeDNR)
13. Continue development of the Lower Platte Missouri Tributaries models and convey progress and outcomes to LPSNRD. (NeDNR)

2019 ANNUAL INTEGRATED MANAGEMENT PLAN REPORT



LOWER PLATTE SOUTH
natural resources district

David Potter, Assistant General Manager

NEBRASKA
DEPT. OF NATURAL RESOURCES

Melissa Mosier, Integrated Water Management Coordinator

LPSNRD Integrated Management Subcommittee Meeting, August 6, 2020
LPSNRD Board Meeting, August 26, 2020



Voluntary IMP

- LPSNRD and NeDNR jointly adopted a voluntary IMP which became effective May 15, 2014
- Plan consists of Goals, Objectives and Actions
- The IMP shall be reviewed annually by the District's Board of Directors and the Department to ensure that the plan continues to meet the needs of the District and Department and to identify Action steps for the next two years.



IMP VISION

“Water uses and water supplies are in a managed balance, supporting economic viability, environmental sustainability and safe living conditions.”

The plan will be instrumental in identifying available water supplies and managing water quantity to meet the future water needs in the District.



Water Inventory

Water Inventory includes the inflow, precipitation, and water storage available to the District along with the water use and outflows from the District.

Goal: Ensure the District has sufficient data to enable the achievement of a water supply that is in balance with current and future water demands in the District.

Water Supply Management

Water Supply Management is the management of water supply, both in and out of the District, through human efforts.

Goal: Ensure a sustainable water supply is available in the amounts and location of the demands through management actions to meet the District's short and long term needs.

Water Use Management

Water Use Management is the management of how water is used and consumed while meeting current and future demands.

Goal: Encourage all water users to minimize water use while optimizing benefits.



IMP Annual Report/Review

- Annual Report covers progress made towards IMP action items for both the LPSNRD and NeDNR in 2019
- LPSNRD and NeDNR jointly decided that no modifications to the IMP are needed at the time of the 2019 annual review



IMP Annual Report/Review

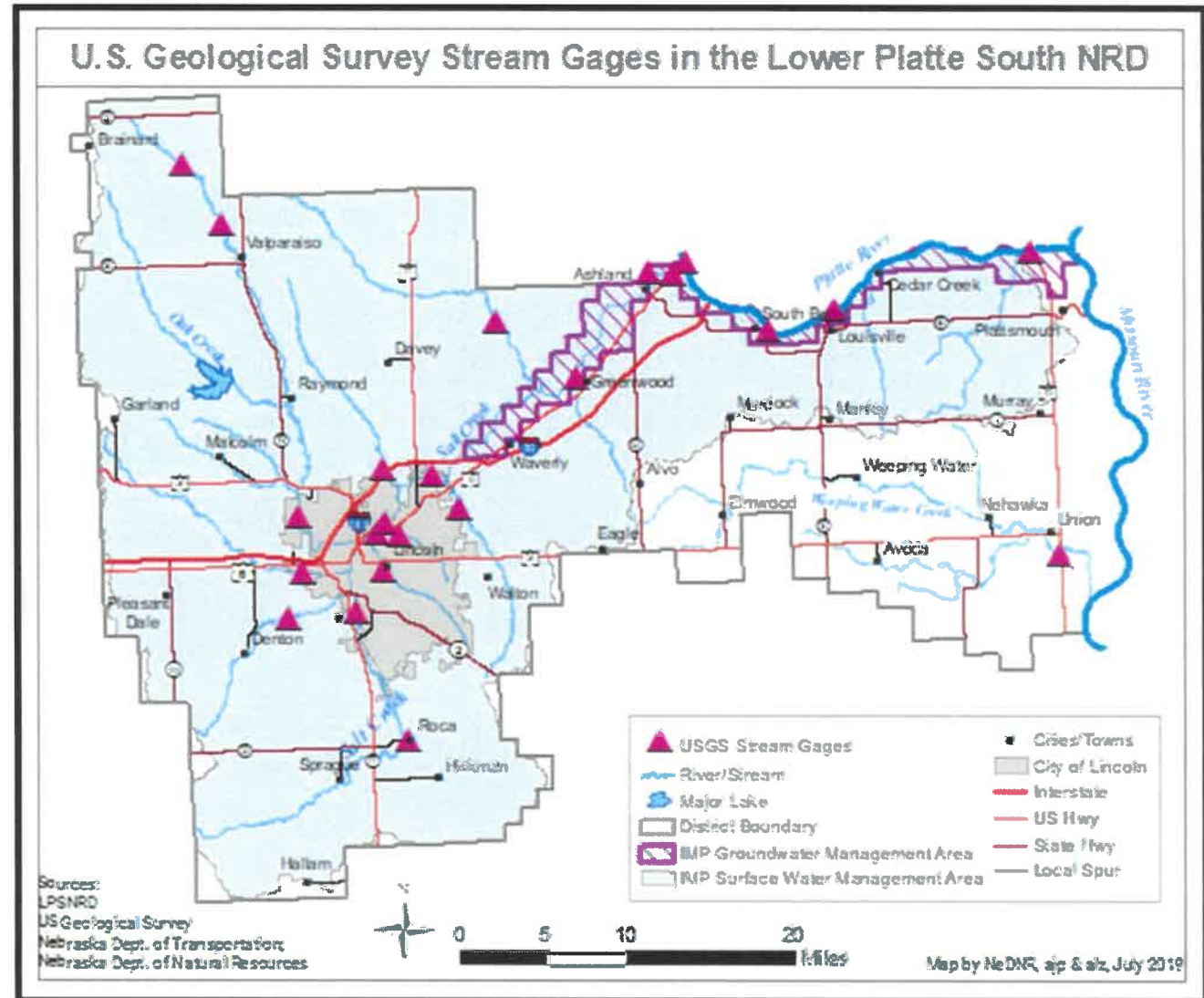
- Monitoring and data collection (groundwater and surface water)
- Studies and planning
- Education/Outreach
- Collaboration (Lower Platte Basin, ENWRA, etc.)

NeDNR's Surface Water Monitoring

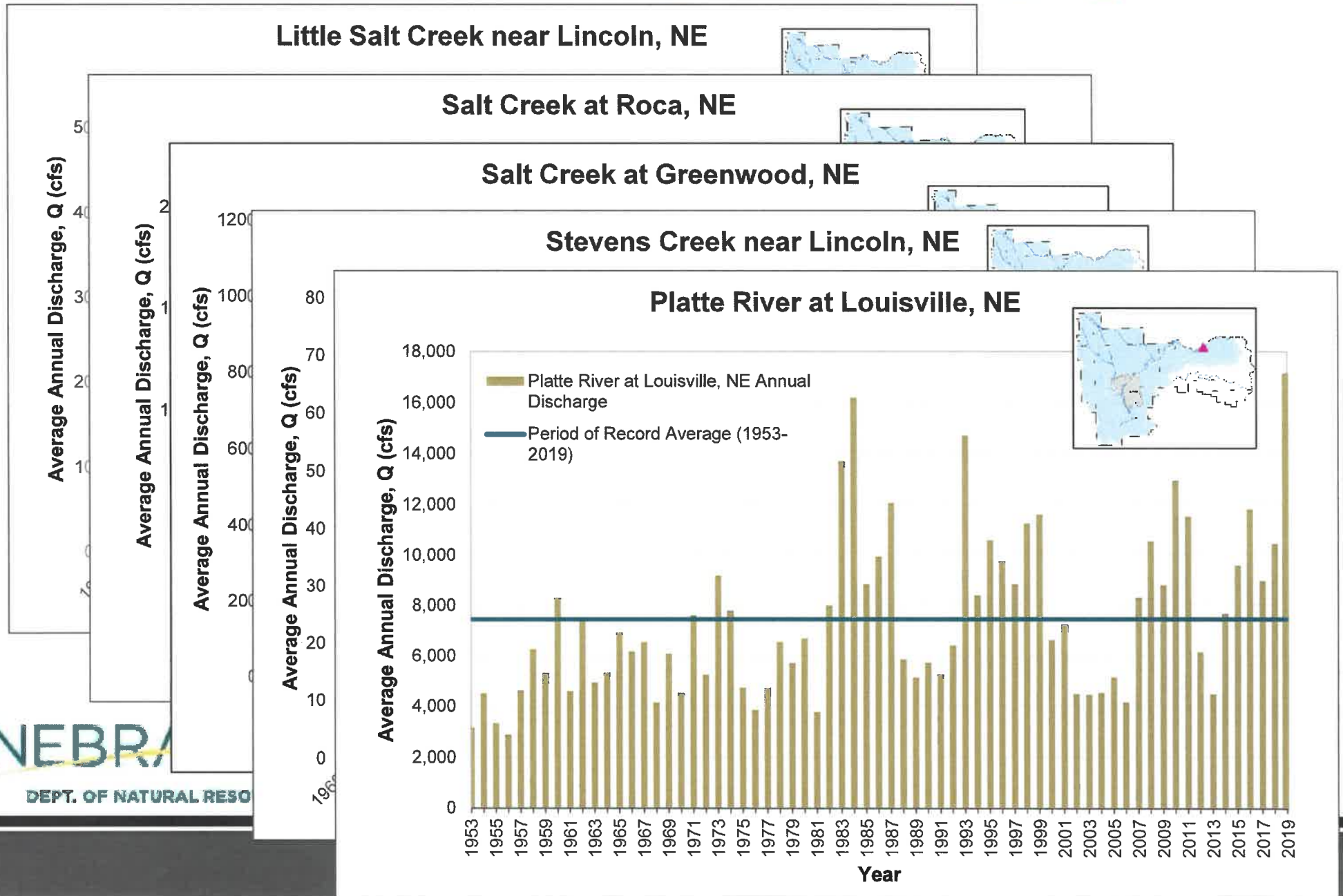
- Streamgaging
- Surface water permitting activities
- Voluntary surface water use reporting

Surface water monitoring: Streamgaging

- 21 USGS streamgages
- Installed 1950's to 2016
- NRD assists in funding of 16 gages

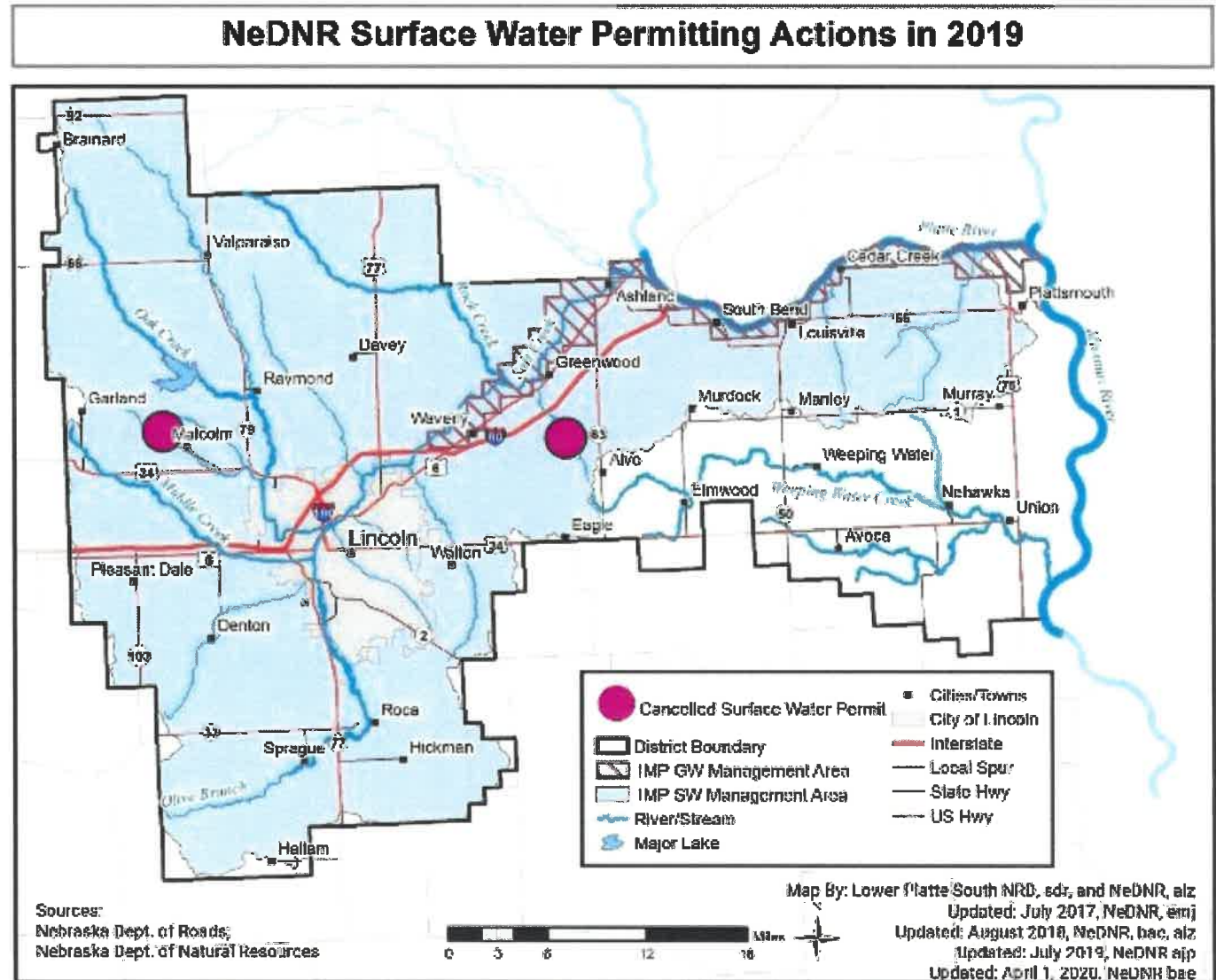


Surface water monitoring: Streamgaging



Surface water monitoring: permitting activities

- 0 new permits
- 2 canceled permits
- 0 permits transferred



Surface water monitoring: 2019 permitting activities

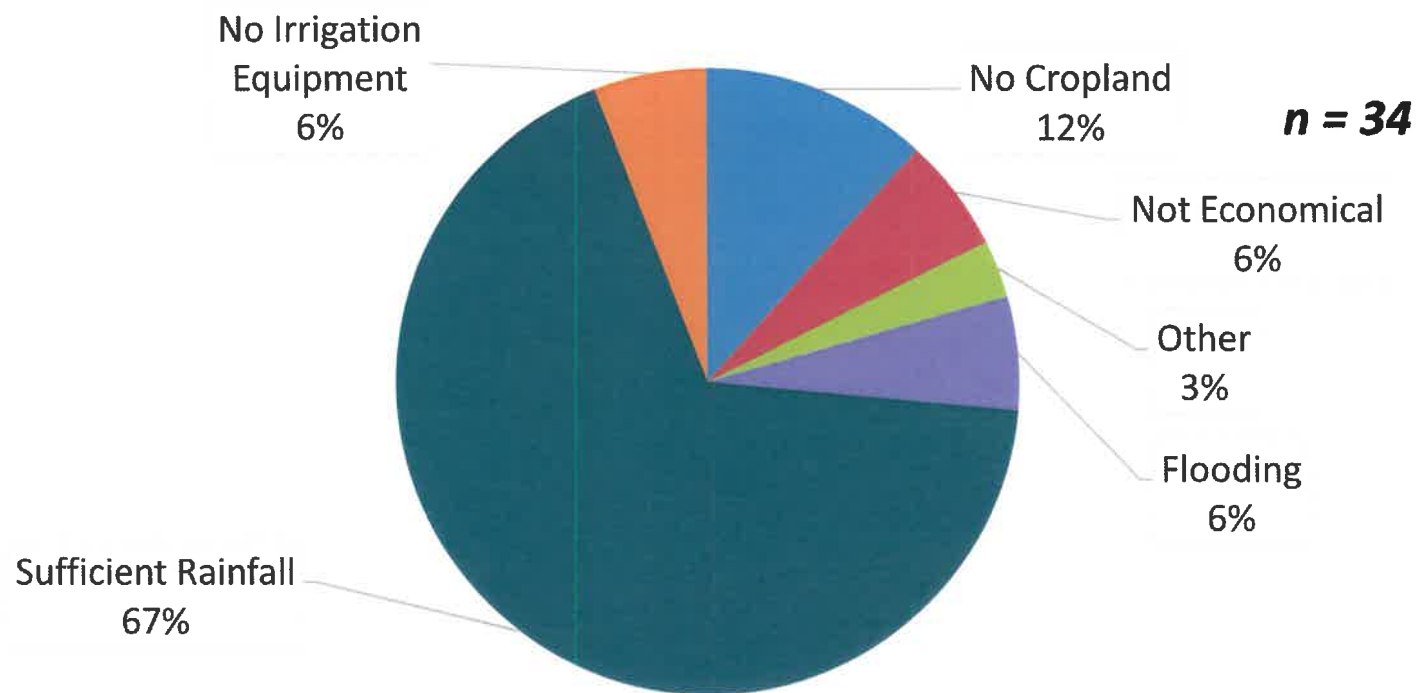
Acres Changes Associated with Surface Water Permitting Actions		
Geographic Area	Newly Permitted Acres	Cancelled Acres
Lower Platte River Basin	0	2.0
Missouri River Tributaries Basin	0	0
Total (Whole NRD)	0	2.0

Surface water voluntary water use reporting

- NeDNR's 6th year of implementation
- Sent out postcards/letters for 207 surface water rights
- 16% response rate for 2019 effort
 - 2018 (28%)
 - 2017 (29%)
 - 2016 (22%)
- Information collected includes:
 - Water use
 - Types of crops
 - Reasons for not irrigating

Voluntary Surface Water Reporting for 2019 in the LPSNRD

Reasons for Not Irrigating with Surface Water



- No Cropland
- Other
- Sufficient Rainfall
- Not Economical
- Flooding
- No Irrigation Equipment

NeDNR/NRD studies and research activities

- Stream accretion/depletion calculator for Lower Platte River Basin (development underway)
 - Calculate consumptive use from land cover/use change
 - Section (1 mile by 1 mile) scale
- Regional groundwater model for the Lower Platte Missouri Tributaries region
 - Initial model development complete
 - Incorporation and evaluation of AEM data
 - Studies have begun in LENRD, and P-MRNRD & LPNNRD
- INSIGHT web tool for water supply, demand and balance
 - Updated to include Republican River & Upper Platte River Basins

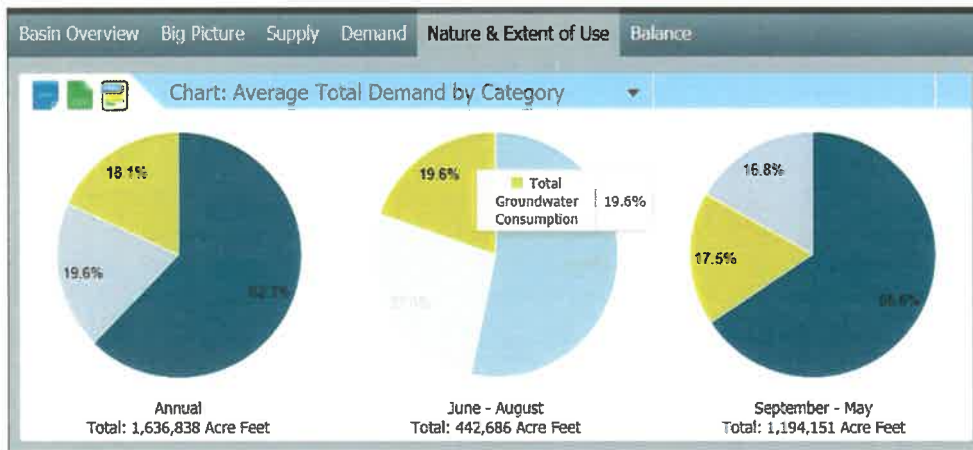
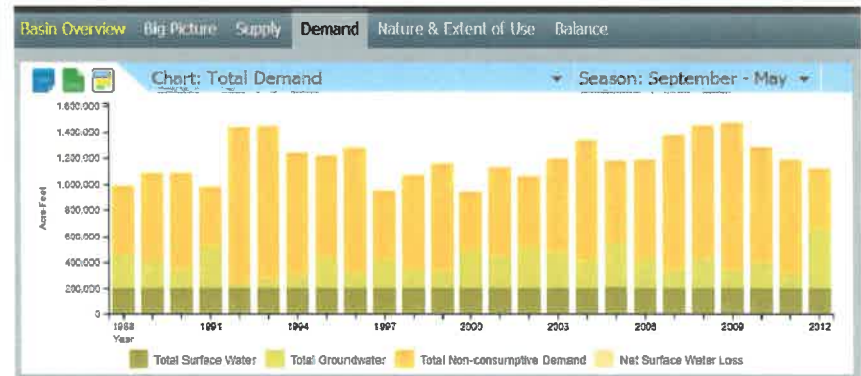
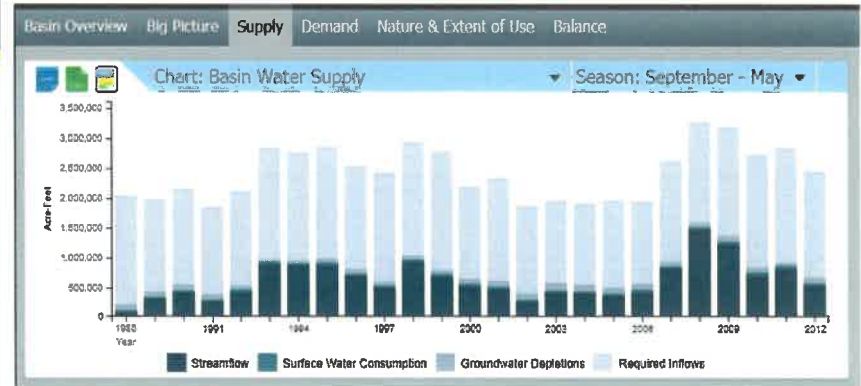
INSIGHT
An Integrated Network of Scientific Information & Geohydrologic Tools

NEBRASKA
Good Life. Great Water.
DEPT. OF NATURAL RESOURCES

HOME ABOUT MODELING DATA STREAM GAGING

Welcome to INSIGHT! We've updated our interface and added data for the Republican River Basin. Click on the map to learn how to interact with the site. You can read about the analysis behind the charts in the methodology document and access the data through the blanketing data page. **DISCLAIMER:** The Republican River Basin analyses are made in conformance with the Republican River Compact and the Final Settlement stipulation and do not strictly adhere to the INSIGHT methodology.

SELECT REGION ▼





2019 ACTIONS & PROGRESS

- **Groundwater monitoring and data collection**
 - 7 well permits/3 completed in 2019
 - One well completed from 2018 permit
 - Water level monitoring in 138 wells, spring & fall, with average static water increase of 1.62 feet
 - Meters and water use reporting from 418 wells
 - 2.5 billion gallons pumped from 418 metered wells, with 268 irrigation wells





2019 ACTIONS & PROGRESS

- **Groundwater monitoring and data collection (cont.)**
 - **Certified irrigated acres-approved in 2019**
 - HCA + 0 for same 3,268 acres
 - Remainder + 186.81 to 27,843.59 acres
 - **Groundwater rules variances (no variances requested)**
 - **Water Banking / Transfers (no activity)**



2019 ACTIONS & PROGRESS

- **Groundwater Moratoriums**
 - HCA limitation on increasing irrigated acres
 - DVB Special Management Area
 - Allocations
 - Moratorium on new or increasing irrigated acres
 - Area boundary northeast of Valparaiso changed in 2016
- **Groundwater Allocations**
 - DVB SMA
 - Sprinkler Irrigation (currently)
 - » 21 inches/3 years/acre, not to exceed 9 inches/year
 - Gravity Irrigation (currently)
 - » 30 inches/3 years/acre, not to exceed 12 inches/year



Regional and Basin collaboration

Both LPSNRD and NeDNR participated in...

- **Eastern Nebraska Water Resources Assessment**
 - Aquifer mapping via airborne electromagnetic (AEM) imaging
- **Lower Platte Corridor Alliance**
 - Local protection and management of River's Resources, streamgaging
- **Lower Platte River Basin Consortium**
 - Water supply resiliency, drought planning
 - Drought Contingency Plan adopted October 2019
- **Lower Platte River Basin Coalition**
 - Coordination and consistency across the Basin
 - Basin-wide Plan approved October 2017
 - First data exchange in April 2018
 - First increment expires in 2021 / Planning for second increment upcoming



Education/Outreach

2019 Activities

- Groundwater Mgt Plan
- AEM data posted online
- 2 Test Your Well nights
- School activities
- Irrigation certification
- BMP promotion
- Media, Social Media, Web
- Publications



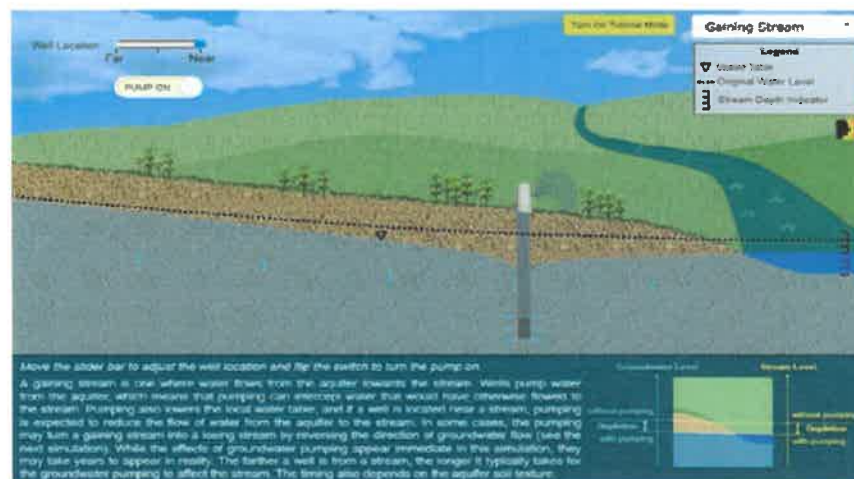
NeDNR education/outreach

▪ 2019 Events

- Nebraska State Fair
- Husker Harvest Days
- NE State Irrigation Association/NE Water Resources Association (joint convention)
- Nebraska Women in Agriculture
- American Water Resources Association regional conference
- World-O-Water (Omaha)
- Sandhills Ranch Expo

▪ Internet-based

- Interactive education applications
- <https://dnr.nebraska.gov/water-planning/education>



NEBRASKA
DEPT. OF NATURAL RESOURCES



2020 & 2021 ACTIONS

Jointly Identified Actions for Succeeding Two Years

NeDNR Actions

- Monitoring of surface water permits & water use
 - Mapping and tracking of acres
 - Pump-site inspections
 - Voluntary water use reporting program
- Continue education and outreach
 - State and local events
 - INSIGHT web portal
 - Interactive educational applications
- Continued development of Lower Platte River/Missouri Tributaries models



2020 & 2021 ACTIONS

Jointly Identified Actions for Succeeding Two Years

LPSNRD Actions

- Monitoring of groundwater levels
- Meter wells & require water use reports
- Continue to track changes in water use, land use, population and climate
- Recommendations for areas with limited aquifer areas
- Discuss coordination of regional water systems and water shortage action plans



2020 & 2021 ACTIONS

Jointly Identified Actions for Succeeding Two Years

Joint LPSNRD/NeDNR Actions

- Continued participation in regional planning groups (LPRCA, ENWRA, LPR Coalition, and Lower Platte Consortium)
 - Drought contingency table-top exercise planned for fall 2020
 - Coalition moving forward with updating INSIGHT data for Basin Plan
- Jointly participate in one public outreach event, as available
- Review, with the Advisory Committee, the need to update the IMP (consistent with Basin Plan)
- Evaluate the need for modifications to the LPSNRD streamgauge network
- LPSNRD/NeDNR quarterly coordination meetings moving forward
 - Update to Integrated Management Subcommittee 2x/year



LOWER PLATTE SOUTH
natural resources district

NEBRASKA

DEPT. OF NATURAL RESOURCES

QUESTIONS OR COMMENTS?

Melissa Mosier, Integrated Water Management Coordinator
Nebraska Department of Natural Resources

David Potter, Assistant General Manager
Lower Platte South Natural Resources District

LOWER PLATTE RIVER CONSORTIUM AMENDMENT

DNR Contract # 918

This Amendment to the original agreement is entered into by and between the following members, all of which are political subdivisions of and are situated in the State of Nebraska or an Agency of the State of Nebraska, and are collectively referred to as "Parties".

The Parties to this Amendment are identified as follows:

Nebraska Department of Natural Resources
Lower Platte South Natural Resources District
Lower Platte North Natural Resources District
Papia-Missouri River Natural Resources District
City of Lincoln
Metropolitan Utilities District

WHEREAS, the Lower Platte River Basin is geographically large and diverse in its geology, land use, ground and surface water supplies, and water uses. Each of the parties is charged with responsibilities for planning, managing, and/or supplying water resources. These Parties are located and carry out their functions in the lower sub-basin of the Lower Platte River Basin, but much of the water supplies that support these functions are derived from the upper sub-basins of the Lower Platte River Basin. The Parties desire to work together to evaluate the water supplies available to the Lower Platte River subbasin during times of shortages.

WHEREAS the original three-year term of this Interlocal Agreement was amended to extend an additional year and may be extended further by mutual agreement of the Parties pursuant to Provision 8 of the original Agreement, the Parties wish to extend the term again.

Therefore, in consideration of the mutual covenants expressed herein, good and valuable consideration, the receipt and sufficiency of which is hereby acknowledged, the Parties agree to Amendment of the original Agreement as follows:

1. DURATION:

This Agreement to extend the term shall become effective and binding upon its approval by appropriate action of all of the Parties. The term of this Interlocal Agreement shall be one (1) year from the effective date of this amendment, unless further extended by the mutual agreement of all Parties.

2. All other provisions of the original Agreement remain in force.

LOWER PLATTE RIVER CONSORTIUM AMENDMENT

DNR Contract # 918

3. DUPLICATE COUNTERPARTS

This Agreement may be executed in any number of counterparts, each of which shall be an original, but all such counterparts shall constitute one and the same instrument. This Agreement Is hereby approved and executed by the following Parties on the dates shown below.

NEBRASKA DEPARTMENT OF NATURAL RESOURCES

BY: _____

DATE: _____

METROPOLITAN UTILITIES DISTRICT

BY: _____

DATE: _____

CITY OF LINCOLN

BY: _____

DATE: _____

LOWER PLATTE SOUTH NATURAL RESOURCES DISTRICT

BY: _____

DATE: _____

LOWER PLATTE NORTH NATURAL RESOURCES DISTRICT

BY: _____

DATE: _____

PAPIO-MISSOURI RIVER NATURAL RESOURCES DISTRICT

BY: _____

DATE: _____