



LOWER PLATTE SOUTH
natural resources district

3125 Portia Street | P.O. Box 83581 • Lincoln, Nebraska 68501-3581 | P: 402.476.2729 • F: 402.476.6454 | www.lpsnrd.org

TO: Board of Directors

FROM: Dan Schulz, Resources Coordinator 

DATE: April 10, 2019

SUBJECT: Recreation, Forestry & Wildlife Subcommittee Meeting Minutes

On Tuesday, April 9, 2019, the Recreation, Forestry and Wildlife Subcommittee met in the District conference room at 5PM. Subcommittee members present were Chair-Anthony Schutz, Gary Aldridge, Tom Green, Ray Stevens and Sarah Wilson. Others present were Ariana Kennedy, Larry Ruth, Dan Schulz and Paul Zillig.

The first agenda item was consideration of a seeding proposal from Prairie Plains Resource Institute to seed the Petersen tract for the Prairie Corridor on Haines Branch Project. Schulz reviewed the attached proposal along with a project map showing the location of the Petersen tract. Schulz indicated the cost for the seeding proposal was \$3,780.00 and that the District will be reimbursed by the City of Lincoln the cost for the seeding with project funds.

It was moved by Aldridge, seconded by Stevens and unanimously approved to recommend that the Board of Directors approve the seeding proposal from Prairie Plains Resource Institute to seed the Petersen tract located in the NE ¼ of Section 34, and the NW ¼ of Section 35, Township 9 North, Range 5 East of the 6th PM, Lancaster County, Nebraska at a cost not to exceed \$3,780.00.

The second agenda item was consideration of a pasture lease agreement with Tom Donahue to graze the Allen tract of the Little Salt Fork Marsh Preserve

Wildlife Management Area. Schulz reviewed the attached agreement. It was noted by the subcommittee that the grazing term shown on the balance sheet should be for three months instead of four months (change was made on the attached copy of the agreement). Schulz indicated Donahue will remove and install new fencing on the north boundary of the Allen tract in exchange for the grass grazed by his cattle (see attached).

It was moved by Wilson and seconded by Stevens to recommend the Board of Directors enter into the pasture lease agreement with Tom Donahue to graze the Allen tract.

Voting in favor of the motion – Green, Schutz, Stevens and Wilson.

Not voting – Aldridge.

The third agenda item was consideration of a pasture lease agreement with Clint Ratkovec to graze the southern portion of the Warner Community Wetland Management Area (see attached). Schulz explained the fencing work to be done by Ratkovec was in exchange for the grass grazed by his cattle (see attached).

It was moved by Wilson and seconded by Stevens to recommend that the Board of Directors enter into the pasture lease agreement with Clint Ratkovec to graze the southern portion of the Warner Community Wetland Management Area.

It was noted by the subcommittee and questioned under Rent, 5(e), removal date of fencing and grazing equipment. A friendly amendment to the motion to change the date was accepted. This date was changed in the attached copy of the agreement from June 1, 2019, to November 15, 2019.

Voting in favor of the motion – Green, Schutz, Stevens and Wilson.

Not voting – Aldridge.

The next agenda item was an update on the flood damage to the Lied Platte River Bridge. Kennedy presented information on site visits by staff, the Game & Parks Commission and the Papio-Missouri River NRD. She showed videos and pictures of the flooding, damage to the bridge and the trail on the Papio side of the bridge.

Staff also mentioned the status of the bridge closure; steps needed to evaluate the damage; and the application for FEMA cost-share funds for repairs. The bridge is expected to be closed for several months.

The next agenda item was an update by Aldridge on his efforts to promote the District's Community Forestry Program. He went through a list of communities and various organizations he's contacted to encourage them to consider applying for the program's funding. He suggested information in the program brochure and the District's website to be harmonized.

The last item was a report by Zillig on a letter received by three Directors concerning two incidents of dogs being injured at Cottontail Wildlife Management Area. He indicated legal counsel was preparing a memo for the Board.

Schutz adjourned the meeting at 6:18PM.



Petersen Tract HDLE Prairie Restoration Proposal

March 20, 2019

Prairie Plains Resource Institute (PPRI) has been providing high-diversity/local ecotype (HDLE) prairie restoration services in central and eastern Nebraska since 1980. Our work includes multiple examples in Lancaster County, including 9 plantings within the Haines Branch corridor and 6 plantings at Spring Creek Prairie.

PPRI has partnered with Lincoln Parks & Recreation and Lower Platte South NRD in the past, and is again offering ecological restoration services in the effort to establish examples of high-quality prairie within the corridor. Specifically, this seeding project will be implemented on the Petersen Tract located in the NE $\frac{1}{4}$ of S34 and the NW $\frac{1}{4}$ of S35, T9N, R5E, Lancaster County, Nebraska.

Geographic Information System (GIS) analysis shows the project site is 7.6 acres in size, with over 45 feet of relief sloping to the west. The soils range from clay loam to silt loam and are moderately well drained to well drained (Appendix D; figure 2). Thus, although somewhat small, the site's variance in topography and soil types call for over 200 species to be seeded, which will result in a rich prairie plant community restoration (figure 1).



Figure 1. Petersen Tract seeding units derived from SSURGO soil unit boundaries and LIDAR data.

With myriad wildflower species blooming throughout the growing season, these diverse native plant communities provide superior butterfly and pollinator habitat while preserving some of the local native plant genetic material that has been lost to years of agricultural conversion and urban development. Furthermore, HDLE restorations are resilient to drought and other extreme climatic and weather events because they are populated with the progeny of the very plants that evolved in Nebraska over centuries of such harsh conditions.

These newly restored acres will enhance stream buffering capabilities, slowing runoff and providing increased filtering services. The site will also provide excellent upland game and non-game habitat, as well as expanding education and recreation opportunities in the area.

Project Specifics:

- An upland prairie seed mix will be broadcast onto the eastern portion of the site no later than May 15th, 2019, at a cost of \$500.00 per acre, for a total of \$1,500.00.
- A mesic (lowland tallgrass) prairie seed mix will be broadcast onto the western portion of the site no later than May 15th, 2019, at a cost of \$500.00 per acre, for a total of \$2,280.00.
- The upland seed mix will contain no less than 117 species (Appendix A).
- The mesic seed mix will contain no less than 149 species (Appendix B).
- Additionally, a wetland mix (139 species) will be sown (at no extra charge) in the lowest spots on 0.52 acres of Nodaway series soils (Appendix D).
- The upland and mesic seed mixes will be planted at no less than 8 gallons of combine harvested grass seed per acre, 2.0 gallons of hand-collected forb mix per acre.
- 100% of this seed mix was harvested from wild populations of native plants within 150 miles of the project site.
- PPRI will use an EZ Flow drop spreader pulled by an ATV to broadcast the seed.
- Any GPS/GIS data generated by PPRI during the restoration process will be made available to LPSNRD and/or the City of Lincoln.
- This seed mix will provide high quality monarch/pollinator habitat, enhancing the overall conservation value of the area.
- The established native plant community will provide high quality upland game and non-game habitat.
- The established native plant community will provide educational and recreational opportunities to the public.

Appendix A: HDLE Upland Seeding Species List (117 spp.)

Grasses (19)

Andropogon gerardii	Big Bluestem
Bouteloua curtipendula	Side-oats Grama
Digitaria cognata	Fall Witchgrass
Elymus canadensis	Canada Wildrye
Elymus virginicus	Virginia Wildrye
Eragrostis spectabilis	Purple Lovegrass
Hesperostipa spartea	Porcupine Grass
Koeleria macrantha	June Grass
Panicum acuminatum	Tapered Rosette Grass
Panicum oligosanthos	Scribner's Panicum
Panicum virgatum	Switchgrass
Pascopyrum smithii	Western Wheatgrass
Paspalum stramineum	Slender Paspalum
Schizachyrium scoparium	Little Bluestem
Sorghastrum nutans	Indiangrass
Sphenopholis obtusata	Prairie Wedgegrass
Sporobolus asper	Tall Dropseed
Sporobolus heterolepis	Prairie Dropseed
Tridens flavus	Purpletop

Sedges/Rushes (6)

Carex brevior	Fescue Sedge
Carex gravida	Heavy Sedge
Carex mesochorea	Midland Sedge
Carex molesta	Troublesome Sedge
Juncus dudleyi	Dudley Rush
Juncus tenuis	Tenuis Rush

Legumes (18)

Amorpha canescens	Leadplant
Astragalus canadensis	Canada Milkvetch
Astragalus crassicaulis	Buffalo Bean
Cassia chamaecrista	Partridge Pea
Dalea candidum	White Prairieclover
Dalea leporina	Foxtail Dalea
Dalea purpurea	Purple Prairieclover
Desmanthus illinoensis	Illinois Bundleflower
Desmodium canadense	Canada Tickclover
Desmodium canescens	Hoary Tickclover
Desmodium illinoense	Illinois Tickclover
Glycyrrhiza lepidota	Wild licorice
Lespedeza capitata	Roundhead Bushclover
Lotus purshianus	Deervetch
Psoralea argophylla	Silver-leaf Scurf Pea
Psoralea tenuiflora	Wild Alfalfa
Schrankia nuttallii	Sensitivebriar
Strophostyles leiosperma	Wild Bean

Composites (37)

<i>Achillea millefolium</i>	Yarrow
<i>Artemisia ludoviciana</i>	Sagewort
<i>Aster ericoides</i>	Heath Aster
<i>Aster oblongifolius</i>	Aromatic Aster
<i>Brickellia eupatoroides</i>	False Boneset
<i>Chrysopsis villosa</i>	Golden Aster
<i>Cirsium altissimum</i>	Tall Thistle
<i>Cirsium flodmanii</i>	Flodman Thistle
<i>Echinacea angustifolia</i>	Purple Coneflower
<i>Erigeron philadelphicus</i>	Marsh Fleabane
<i>Eupatorium altissimum</i>	Tall Joe Pye Weed
<i>Euthamia graminifolia</i>	Grassleaf Goldenrod
<i>Gnaphalium obtusifolium</i>	Fragrant Cudweed
<i>Grindelia squarrosa</i>	Gumweed
<i>Helianthus maximiliani</i>	Maximillian Sunflower
<i>Helianthus rigidus</i>	Stiff Sunflower
<i>Heliopsis helianthoides</i>	False Sunflower
<i>Lactuca canadensis</i>	Canada Lettuce
<i>Lactuca ludoviciana</i>	Wild Lettuce
<i>Liatris aspera</i>	Rough Gayfeather
<i>Liatris punctata</i>	Dotted Gayfeather
<i>Liatris squarrosa</i>	Scaly Blazing Star
<i>Prenathes aspera</i>	Rough Rattlesnake Root
<i>Ratibida columnifera</i>	Upright Prairie Coneflower
<i>Rudbeckia hirta</i>	Black-eyed Susan
<i>Senecio plattensis</i>	Prairie Ragwort
<i>Silphium integrifolium</i>	Entire-leaf Rosinweed
<i>Silphium laciniatum</i>	Compass Plant
<i>Silphium perfoliatum</i>	Cup Plant
<i>Solidago canadensis</i>	Canada Goldenrod
<i>Solidago gigantea</i>	Giant Goldenrod
<i>Solidago missouriensis</i>	Missouri Goldenrod
<i>Solidago mollis</i>	Western Goldenrod
<i>Solidago rigida</i>	Stiff Goldenrod
<i>Solidago speciosa</i>	Showy Goldenrod
<i>Vernonia baldwinii</i>	Western Ironweed
<i>Vernonia fasciculata</i>	Ironweed

Misc. Forbs (37)

<i>Agalinis aspera</i>	Tall False Foxglove
<i>Allium canadense</i>	Canada Garlic (Seed)
<i>Allium canadense</i>	Canada Garlic (Sets)
<i>Anemone cylindrica</i>	Candle Anemone
<i>Apocynum cannabinum</i>	Prairie Dogbane
<i>Asclepias speciosa</i>	Showy Milkweed
<i>Asclepias sullivantii</i>	Sullivant's Milkweed
<i>Asclepias syriaca</i>	Common Milkweed
<i>Asclepias tuberosa</i>	Butterfly Milkweed
<i>Asclepias verticillata</i>	Whorled Milkweed
<i>Callirhoe alcaeoides</i>	Pale Poppy Mallow
<i>Callirhoe involucrata</i>	Purple Poppy Mallow

<i>Calylophus serrulatus</i>	Serrate-leaf Primrose
<i>Ceanothus herbaceus</i>	New Jersey Tea
<i>Euphorbia marginata</i>	Snow-On-The-Mountain
<i>Gaura parviflora</i>	Velvety Guara
<i>Gentiana puberulenta</i>	Downy Gentian
<i>Linum sulcatum</i>	grooved Flax
<i>Mirabilis nyctaginea</i>	Wild Four O'clock
<i>Monarda fistulosa</i>	Wild Bergamot
<i>Oenothera villosa</i>	Common Evening Primrose
<i>Onosmodium molle</i>	Marbleseed
<i>Penstemon gracilis</i>	Slender Penstemon
<i>Penstemon grandiflorus</i>	Shell-leaf Penstemon
<i>Physalis longifolia</i>	Common Ground-cherry
<i>Plantago patagonica</i>	Wooly Plantain
<i>Potentilla arguta</i>	Prairie Cinquefoil
<i>Pycnanthemum virginianum</i>	Mountain Mint
<i>Rosa arkansana</i>	Wild Rose
<i>Rosa woodsii</i>	Wood's Rose
<i>Salvia azurea</i>	Pitcher Sage
<i>Silene anterrhina</i>	Sleepy Catchfly
<i>Sisyrinchium campestre</i>	Prairie Blue-eyed Grass
<i>Symphoricarpos orbiculatus</i>	Coralberry
<i>Tradescantia bracteata</i>	Bracted Spiderwort
<i>Verbena stricta</i>	Hoary Vervain
<i>Verbena urticifolia</i>	Elm-leaf Verbena

Appendix B: HDLE Mesic (Lowland Tallgrass) Seeding Species List (149 spp.)

Grasses (20)

Andropogon gerardii	Big Bluestem
Calamagrostis stricta	Northern Reedgrass
Digitaria cognata	Fall Witchgrass
Elymus canadensis	Canada Wildrye
Elymus trachycaulus	Slender Wheatgrass
Elymus virginicus	Virginia Wildrye
Eragrostis spectabilis	Purple Lovegrass
Hordeum jubatum	Foxtail Barley
Hordeum pusillum	Little Barley
Koeleria macrantha	June Grass
Panicum acuminatum	Tapered Rosette Grass
Panicum oligosanthes	Scribner's Panicum
Panicum virgatum	Switchgrass
Pascopyrum smithii	Western Wheatgrass
Schizachyrium scoparium	Little Bluestem
Sorghastrum nutans	Indiangrass
Spartina pectinata	Prairie Cordgrass
Sphenopholis obtusata	Prairie Wedgegrass
Sporobolus asper	Tall Dropseed
Tridens flavus	Purpletop

Sedges/Rushes (21)

Carex brachyglossa	Yellowfruit Sedge
Carex brevior	Fescue Sedge
Carex crawei	Crawe's Sedge
Carex cristatella	Crested Sedge
Carex gravida	Wetland Gravida
Carex gravida	Heavy Sedge
Carex laeviconica	Smooth Cone Sedge
Carex mesochorea	Midland Sedge
Carex molesta	Troublesome Sedge
Carex molesta	Troublesome Sedge
Carex pellita	Woolly Sedge
Carex scoparia	Broom Sedge
Carex tribuloides	Blunt Broomsedge
Carex vulpinoidea	Fox Sedge
Fimbristylis puberula	Hairy Fimbry
Juncus dudleyi	Dudley Rush
Juncus interior	Interior Rush
Juncus tenuis	Tenuis Rush
Schoenoplectus pungens	Common Threesquare
Scirpus pallidus	Pale Bulrush
Scirpus pendulus	Rufous Bulrush

Legumes (17)

Amorpha canescens	Leadplant
Astragalus canadensis	Canada Milkvetch
Cassia chamaecrista	Partridge Pea
Dalea candidum	White Prairieclover
Dalea leporina	Foxtail Dalea
Dalea purpurea	Purple Prairieclover
Desmanthus illinoensis	Illinois Bundleflower
Desmodium canadense	Canada Tickclover
Desmodium canescens	Hoary Tickclover
Desmodium illinoense	Illinois Tickclover

Glycyrrhiza lepidota
Lespedeza capitata
Lotus purshianus
Psoralea argophylla
Psoralea tenuiflora
Schranksia nuttallii
Strophostyles leiosperma

Wild licorice
Roundhead Bushclover
Deervetch
Silver-leaf Scurf Pea
Wild Alfalfa
Sensitivebriar
Wild Bean

Composites (46)

Achillea millefolium
Arnoglossum plantagineum
Artemisia ludoviciana
Aster ericoides
Aster novae-angliae
Aster prealtus
Aster simplex
Boltonia asteroides
Brickellia eupatoroides
Cirsium altissimum
Cirsium flodmanii
Coreopsis tinctoria
Echinacea angustifolia
Erigeron philadelphicus
Erigeron strigosus
Eupatorium altissimum
Euthamia graminifolia
Gnaphalium obtusifolium
Grindelia squarrosa
Helenium autumnale
Helianthus grosseserratus
Helianthus maximilianii
Helianthus rigidus
Helianthus tuberosus
Heliopsis helianthoides
Hieracium longipilum
Iva annua
Lactuca canadensis
Lactuca ludoviciana
Liatris lancifolia
Liatris punctata
Prenathes aspera
Ratibida columnifera
Rudbeckia hirta
Rudbeckia laciniata
Senecio plattensis
Silphium integrifolium
Silphium laciniatum
Silphium perfoliatum
Solidago canadensis
Solidago gigantea
Solidago missouriensis
Solidago rigida
Solidago speciosa
Vernonia baldwinii
Vernonia fasciculata

Yarrow
Pale Indian Plantain
Sagewort
Heath Aster
New England Aster
Blue Willowleaf Aster
Tall White Aster
False Aster
False Boneset
Tall Thistle
Flodman Thistle
Plains Coreopsis
Purple Coneflower
Marsh Fleabane
Daisy Fleabane
Tall Joe Pye Weed
Grassleaf Goldenrod
Fragrant Cudweed
Gumweed
Sneezeweed
Sawtooth Sunflower
Maximillian Sunflower
Stiff Sunflower
Jerusalem Artichoke
False Sunflower
Longbeard Hawkweed
Small Marsh Elder
Canada Lettuce
Wild Lettuce
Thickspike Gayfeather
Dotted Gayfeather
Rough Rattlesnake Root
Upright Prairie Coneflower
Black-eyed Susan
Cutleaf Coneflower
Prairie Ragwort
Entire-leaf Rosinweed
Compass Plant
Cup Plant
Canada Goldenrod
Giant Goldenrod
Missouri Goldenrod
Stiff Goldenrod
Showy Goldenrod
Western Ironweed
Ironweed

Misc. Forbs (45)

Allium canadense	Canada Garlic (Sets)
Allium canadense	Canada Garlic (Seed)
Anemone canadensis	Meadow Anemone
Anemone cylindrica	Candle Anemone
Apocynum cannabinum	Prairie Dogbane
Asclepias speciosa	Showy Milkweed
Asclepias sullivantii	Sullivant's Milkweed
Asclepias syriaca	Common Milkweed
Asclepias verticillata	Whorled Milkweed
Callirhoe alcaeoides	Pale Poppy Mallow
Callirhoe involucrata	Purple Poppy Mallow
Calylophus serrulatus	Serrate-leaf Primrose
Euphorbia marginata	Snow-On-The-Mountain
Gaura parviflora	Velvety Guara
Gentiana puberulenta	Downy Gentian
Linum sulcatum	Grooved Flax
Lobelia siphilitica	Blue Cardinal Flower
Lobelia spicata	Palespike Lobelia
Mirabilis nyctaginea	Wild Four O'clock
Monarda fistulosa	Wild Bergamot
Oenothera villosa	Common Evening Primrose
Onosmodium molle	Marbleseed
Penstemon digitalis	Smooth Penstemon
Penstemon gracilis	Slender Penstemon
Penstemon grandiflorus	Shell-leaf Penstemon
Physalis longifolia	Common Ground-cherry
Plantago patagonica	Wooly Plantain
Polygonum pennsylvanicum	Pennsylvania smartweed
Polytaenia nuttallii	Prairie Parsley
Potentilla arguta	Prairie Cinquefoil
Potentilla norvegica	Norwegian Cinquefoil
Prunella vulgaris	Self-heal
Pycnanthemum virginianum	Mountain Mint
Rosa arkansana	Wild Rose
Rosa woodsii	Wood's Rose
Salvia azurea	Pitcher Sage
Sisyrinchium campestre	Prairie Blue-eyed Grass
Sisyrinchium montanum	Strict Blue-eyed Grass
Teucrium canadense	American Germander
Thalictrum dasycarpum	Purple Meadow Rue
Tradescantia bracteata	Bracted Spiderwort
Verbena hastata	Blue Vervain
Verbena stricta	Hoary Vervain
Verbena urticifolia	Elm-leaf Verbena
Symphoricarpos orbiculatus	Coralberry

Appendix C: HDLE Wetland Overseeding Species List (139 spp.)

Grasses (15)

Alopecurus	aequalis	Shortawn Foxtail
Calamagrostis	canadensis	Bluejoint
Calamagrostis	stricta	Northern Reedgrass
Elymus	trachycaulus	Slender Wheatgrass
Elymus	virginicus	Virginia Wildrye
Glyceria	grandis	Large Manna Grass
Glyceria	striata	Manna grass
Hordeum	jubatum	Foxtail Barley
Leersia	oryzoides	Rice Cut Grass
Muhlenbergia	racemosa	Marsh Muhly
Panicum	acuminatum	Tapered Rosette Grass
Panicum	oligosanthes	Scribner's Panicum
Pascopyrum	smithii	Western Wheatgrass
Spartina	pectinata	Prairie Cordgrass
Sphenopholis	obtusata	Prairie Wedgegrass

Sedges/Rushes (34)

Carex	bebbii	Bebb's Sedge
Carex	brachyglossa	Yellowfruit Sedge
Carex	brevior	Fescue Sedge
Carex	crawei	Crawe's Sedge
Carex	crisatella	Crested Sedge
Carex	emoryi	Emory's Sedge
Carex	gravida	Heavy Sedge
Carex	gravida	Wetland Gravida
Carex	hystericina	Bottlebrush Sedge
Carex	interior	Interior Sedge
Carex	laeviconica	Smooth Cone Sedge
Carex	molesta	Troublesome Sedge
Carex	pellita	Wooly Sedge
Carex	praegracilis	Clustered Field Sedge
Carex	sartwellii	Sartwell's Sedge
Carex	scoparia	Broom Sedge
Carex	stipata	Saw-beak Sedge
Carex	tribuloides	Blunt Broomsedge
Carex	vulpinoidea	Fox Sedge
Eleocharis	palustris	Common Spikerush
Eleocharis	erythropoda	Bald Spikerush
Fimbristylis	puberula	Hairy Fimbry
Juncus	balticus	Baltic Rush
Juncus	dudleyi	Dudley Rush
Juncus	interior	Interior Rush
Juncus	marginatus	Grassleaf Rush
Juncus	tenuis	Tenuis Rush
Juncus	torreyi	Torrey's Rush
Schoenoplectus	acutus	Chairmaker's Rush
Schoenoplectus	pungens	Common Threesquare
Scirpus	atrovirens	Dark Green Bulrush
Scirpus	maritimus	Prairie Bulrush
Scirpus	pallidus	Pale Bulrush

Scirpus pendulus Rufous Bulrush

Legumes (6)

Astragalus	canadensis	Canada Milkvetch
Cassia	chamaecrista	Partridge Pea
Dalea	leporina	Foxtail Dalea
Desmanthus	illinoensis	Illinois Bundleflower
Glycyrrhiza	lepidota	Wild licorice
Lotus	purshianus	Deervetch

Composites (32)

Achillea	millefolium	Yarrow
Aster	ericoides	Heath Aster
Aster	novae-angliae	New England Aster
Aster	prealtus	Blue Willowleaf Aster
Aster	simplex	Tall White Aster
Bidens	comosa	Threelobe Beggarticks
Boehmeria	cylindrica	False Nettle
Boltonia	asteroides	False Aster
Coreopsis	tinctoria	Plains Correopsis
Erigeron	philadelphicus	Marsh Fleabane
Erigeron	strigosus	Daisy Fleabane
Eupatorium	maculatum	Spotted Joe Pye Weed
Eupatorium	perfoliatum	Boneset
Euthamia	graminifolia	Grassleaf Goldenrod
Grindelia	squarrosa	Gumweed
Helenium	autumnale	Sneezeweed
Helenium	autumnale	Sneezeweed (Fertig)
Helianthus	grosseserratus	Sawtooth Sunflower
Helianthus	tuberosus	Jerusalem Artichoke
Iva	annua	Small Marsh Elder
Lactuca	canadensis	Canada Lettuce
Lactuca	ludoviciana	Wild Lettuce
Liatris	lancifolia	Thickspike Gayfeather
Ratibida	columnifera	Upright Prairie Coneflower
Rudbeckia	hirta	Black-eyed Susan
Rudbeckia	laciniata	Cutleaf Coneflower
Senecio	plattensis	Prairie Ragwort
Silphium	integrifolium	Entire-leaf Rosinweed
Silphium	perfoliatum	Cup Plant
Solidago	canadensis	Canada Goldenrod
Solidago	gigantea	Giant Goldenrod
Vernonia	fasciculata	Ironweed

Misc. Forbs (52)

Agalinis	tenuifolia	Slender False Foxglove
Alisma	trivale	American Water Plantain
Allium	canadense	Canada Garlic (Sets)
Allium	canadense	Canada Garlic (Seed)
Ammania	coccinea	Tooth Cup
Anemone	canadensis	Meadow Anemone
Anemone	cylindrica	Candle Anemone
Apocynum	cannabinum	Prairie Dogbane

Asclepias	incarnata	Swamp Milkweed
Asclepias	speciosa	Showy Milkweed
Asclepias	sullivantii	Sullivant's Milkweed
Asclepias	syriaca	Common Milkweed
Asclepias	verticillata	Whorled Milkweed
Epilobium	coloratum	Cinnamon Willow Herb
Gentiana	andrewsii	Bottle Gentian
Impatiens	capensis	Spotted Touch-me-not
Lippia	lanceolata	Fog Fruit
Lobelia	cardinalis	Cardinal Flower
Lobelia	siphilitica	Blue Cardinal Flower
Lobelia	spicata	Palespike Lobelia
Lycopus	americanus	American Bugleweed
Lycopus	asper	Rough Bugleweed
Lysimachia	ciliata	Fringed Loosestrife
Lythrum	alatum	Winged Lythrum
Mentha	arvensis	Field Mint
Oenothera	villosa	Common Evening Primrose
Penstemon	digitalis	Smooth Penstemon
Penstemon	gracilis	Slender Penstemon
Penthorum	sedoides	Ditch Stonecrop
Physalis	longifolia	Common Ground-cherry
Polygonum	coccineum	Swamp Smartweed
Polygonum	hydropiperoides	Mild Water Pepper
Polygonum	laphathifolium	Pale Smartweed
Polygonum	pennsylvanicum	Pennsylvania smartweed
Polytaenia	nuttallii	Prairie Parsley
Potentilla	arguta	Prairie Cinquefoil
Potentilla	norvegica	Norwegian Cinquefoil
Prunella	vulgaris	Self-heal
Pycnanthemum	virginianum	Mountain Mint
Ranunculus	sceleratus	Cursed Crowfoot
Sagittaria	brevirostra	Shortbeak Arrowhead
Sagittaria	calycina	Hooded Arrowhead
Sagittaria	latifolia	Broadleaf Arrowhead
Scutellaria	galericulata	Marsh Skullcap
Sisyrinchium	montanum	Strict Blue-eyed Grass
Teucrium	canadense	American Germander
Thalictrum	dasycarpum	Purple Meadow Rue
Tradescantia	bracteata	Bracted Spiderwort
Tradescantia	occidentale	Western Spiderwort
Verbena	hastata	Blue Vervain
Verbena	stricta	Hoary Vervain
Verbena	urticifolia	Elm-leaf Verbena

Appendix D: Non-technical Soil Descriptions

Judson C series (27.4%) 2.07 acres: "Nontechnical description"|"SOI"|"461"|"This gently sloping, moderately well drained soil formed in colluvium and alluvium on foot slopes and alluvial fans. It has a silt loam surface layer and moderately permeable silty clay loam subsoil."|"98120"|"98120:m:65417"

Kennebec series (32.5%) 2.46 acres: "Nontechnical description"|"SOI"|"462"|"This nearly level, moderately well drained soil formed in alluvium on bottom land. It has a silt loam surface layer and moderately permeable silt clay loam underlying material. It is occasionally flooded."|"98121"|"98121:m:65418"

Shelby series (33.2%) 2.51 acres: "Nontechnical description"|"SOI"|"479"|"This deep, strongly sloping, moderately well drained soil formed in glacial till on uplands. It has a clay loam surface layer and moderately slowly permeable clay loam subsoil."|"98145"|"98145:m:65443"

Nodaway series (6.9%) 0.52 acres: "Nontechnical description"|"SOI"|"120"|"This deep, nearly level, moderately well drained soil formed in alluvium on bottom land. It has a silt loam surface layer and moderately permeable, silt loam underlying material. It has many entrenched, meandering stream channels and is frequently flooded."|"98132"|"

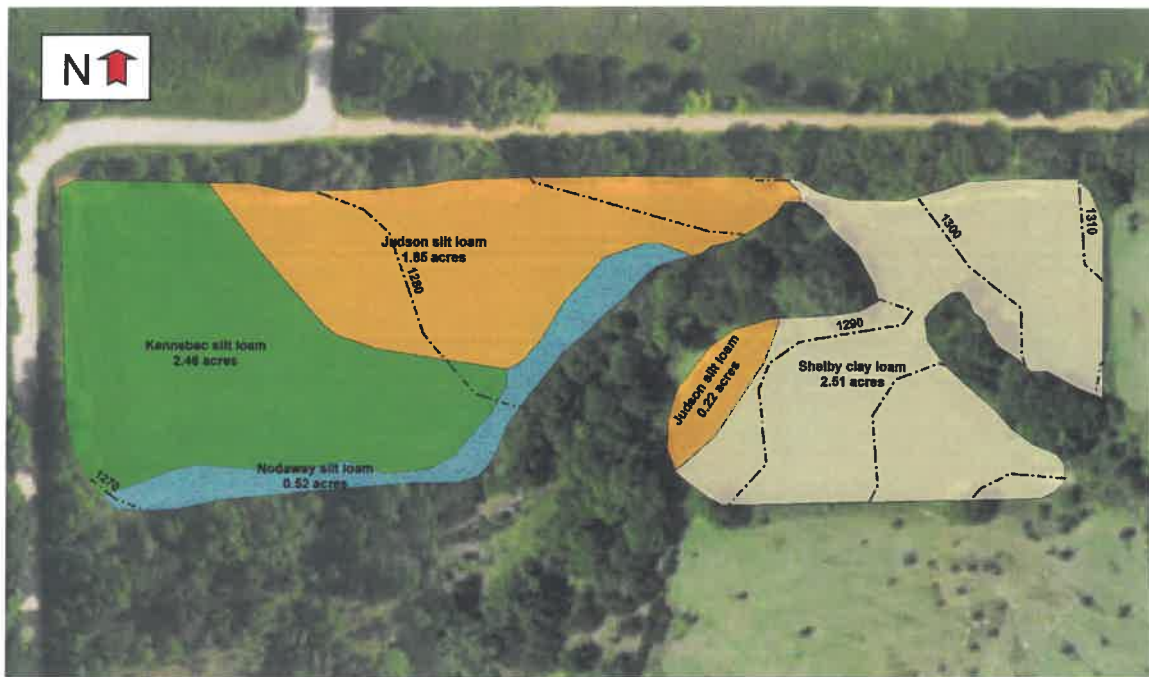
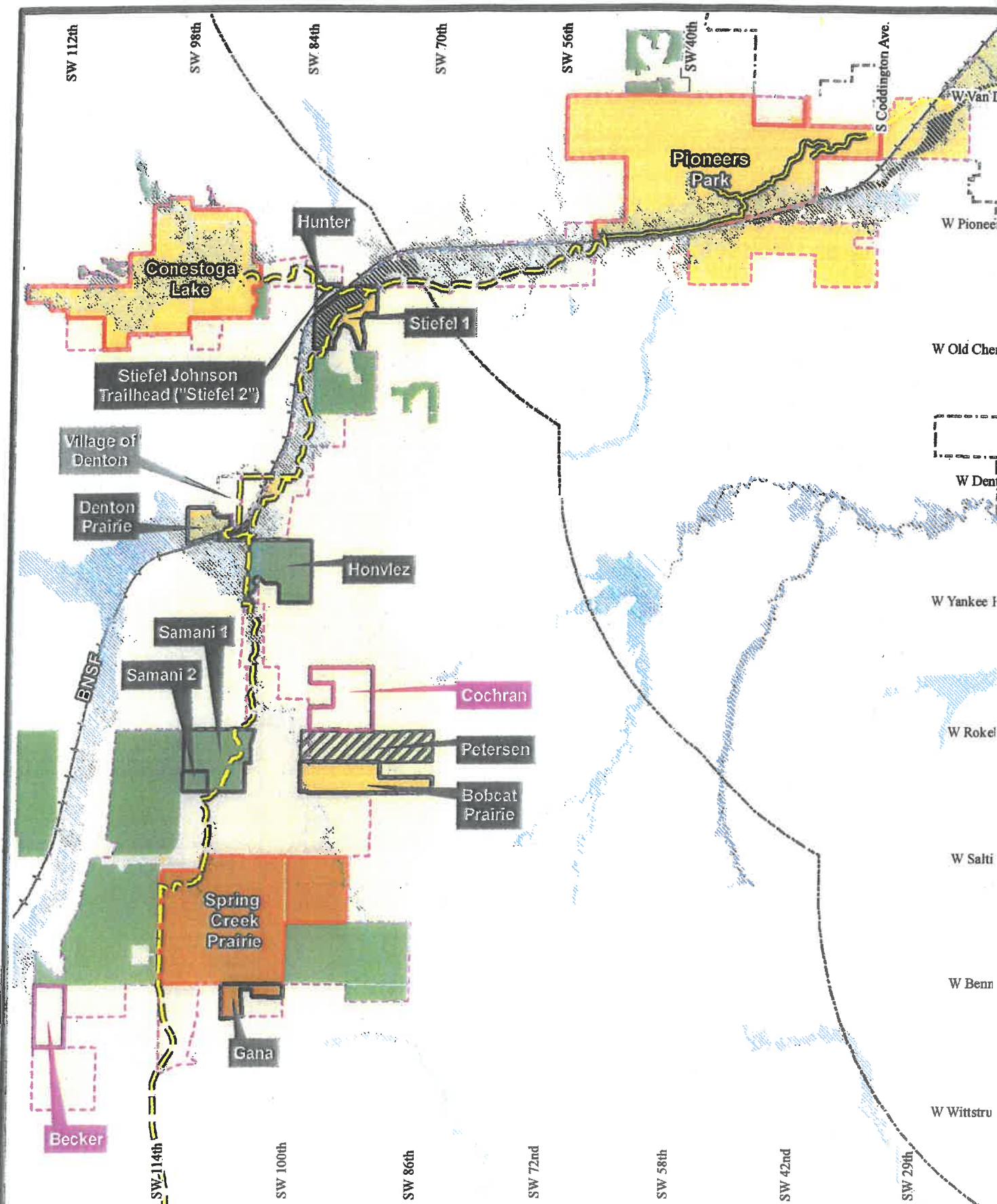


Figure 2. Petersen Tract SSURGO soil unit boundaries with elevation contours.



Prairie Corridor on Haines Branch



- City Limits
- Priority Area
- Destination Areas
- BNSF ROW
- Conservation Easement
- Public Land
- Spring Creek Prairie
- Conservation Easement (Addition)
- Public Land (Addition)
- Spring Creek Prairie (Addition)
- Under Contract
- Floodway
- 100 Year Flood
- Existing Trail
- Future Trails
- 3-Mile Jurisdiction

PASTURE LEASE AGREEMENT

This Agreement made and entered into effective as of the dated executed by both parties by and between **LOWER PLATTE SOUTH NATURAL RESOURCES DISTRICT**, a political subdivision of the State of Nebraska, 3125 Portia, PO Box 83581, Lincoln, Nebraska 68501-3581, referred to in this Agreement as “the District” and **TOM DONAHUE**, 670 Raymond Road, Lincoln, Nebraska 68428, referred to in this Agreement as “Donahue”, collectively referred to in this Agreement as “the Parties.”

WITNESSETH:

RECITALS

- A. The District is the owner a certain tract of land containing 66 acres, more or less, located in the South Half of the Northeast Quarter (S1/2NE1/4) Section 34, Township 12 North, Range 6 East of the 6th P.M., Lancaster County, Nebraska, commonly referred to as “the Allen Saline Wetland”, as further described and shown on Exhibit “A” attached hereto and incorporated herein by this reference, and referred to in this Agreement as “the Property.”
- B. Donahue wishes to lease the Property as pasture for the purpose of grazing cattle and the District is willing to lease the Property to Donahue for that purpose, under the terms and conditions as set forth in this Agreement.

NOW, THEREFORE, in consideration of the above Recitals and the mutual promises and covenants contained in this Agreement, the Parties agree as follows:

1. **Lease Premises.** The District leases the Property to Donahue as a pasture for cattle and Donahue leases the Property from the District to graze cattle.
2. **Term.** The term of the Pasture Lease shall be for a period beginning June 1, 2019, and shall terminate on September 1, 2019, unless sooner terminated by the District pursuant to paragraph 3 below, or mutually extended by the Parties.
3. **Early Termination.** The District, in its sole discretion, may terminate this Agreement at any time, upon five (5) days written notice, if a condition or conditions exist that in the opinion of the District will permanently or severely damage the viability of the Property as a saline wetland or if Donahue violates the grazing limitation provided in paragraph 7 below.
4. **Occupancy and Use.** Donahue shall occupy and use the Property only as pasture for grazing cattle, as further described and provided for in this Agreement. Donahue shall not use the Property for any other purpose without the prior written consent of the District.

5. **Rent.** There is no cash rent due to the District for the rental of the Property by Donahue. In lieu of cash rent; however, Donahue shall, at his sole cost and expense, provide certain services and furnish certain equipment and materials, as follows:
- (a) Remove approximately 590 feet of existing fence and replace such fence with a new four (4) strand wire fence with top and bottom strands of smooth wire and middle two (2) strands of barbed wire, to be completed by November 1, 2019;
 - (b) Provide one or more electric fence chargers and install and maintain a suitable electric fence, fencers, fence posts and all other materials or equipment suitable for grazing cattle, all of which shall be removed from the Property no later than September 30, 2019; and
 - (c) Provide adequate watering devises, tanks, mineral blocks and all other equipment, material, and supplies necessary for the proper feeding and care of the cattle to be pastured on the Property, all of which shall be removed from the Property no later than October 15, 2019.
6. **Grazing and Haying.** Donahue may graze cattle on the Property beginning on June1, 2019 provided however that all cattle shall be removed from the Property no later than September, 1, 2019. The anticipated grazing schedule is part of a rotation of 18 cow/calf pairs on the properties of the District, and the Nebraska Game & Parks Commission. This herd will be allowed onto the District's property and the Game and Parks Commission during the lease period. Violation of this provision shall constitute grounds for early termination of this Agreement pursuant to paragraph 3 above, unless Donahue first obtains in writing the consent of the District. The District may request Donahue to reduce the number of cattle on the Property, if adequate hay is not available for feed and Donahue shall promptly comply with such request.

THE DISTRICT MAKES NO WARRANTY IN THIS AGREEMENT, EXPRESSED OR IMPLIED AND SPECIFICALLY DISCLAIMS ANY WARRNTY THAT SUITABLE GRASS FOR GRAZING CATTLE WILL BE AVAILABLE ON THE PROPERTY DURING THE ENTIRE GRAZING PERIOD.

7. **Inspection.** The District shall have the right to inspect the Property at all reasonable times without notice.
8. **Improvements.** Donahue shall make no improvements to the Property other than what is required in paragraph 5 above, without the prior written consent of the District.
9. **Insurance.** Donahue shall obtain and keep in full force during the term of this Agreement, commercial liability insurance and automobile liability insurance covering his actions under this Agreement, each in the minimum amount of \$1,000,000.00. Donahue shall include the District as a name insured on the policy of

insurance, waive the right of subrogation, and furnish a certificate of insurance to the District prior to the commencement of this Agreement.

10. **Indemnification.** Donahue shall indemnify, defend, and hold harmless the District and its officers, directors, agents, and employees, from and against all claims, damages, liabilities, and court awards, including expenses, and reasonable attorney fees if allowed under Nebraska law, to the extent caused by the negligence or any wrongful act, error, or omission of Donahue or his agents or employees, resulting from or related to Donahue's actions as set forth in this Agreement. Donahue shall provide the District with prompt notice of any claim for which he or the District may be liable. The District shall provide Donahue with prompt notice of any claim for which indemnification may be sought under this paragraph.
 11. **Dispute Resolution.** Before either party to the Agreement may bring suit in any court concerning any issue relating to this Agreement, such Party must first seek in good faith to resolve the issue through negotiation or other form of nonbinding alternate dispute resolution mutually acceptable to the Parties.
 12. **Assignment.** No Party to this Agreement may assign this Agreement to any other person or entity without the prior written consent of the other party.
 13. **No Waiver.** No assent, express or implied, by either party to any breach of the other Party shall be deemed to be a waiver or any succeeding or continuing breach.
 14. **Amendments.** No amendment or other modification to this Agreement shall be effective unless it is in writing and approved by the Parties. Such amendment shall become effective only after it has been executed by the Parties.
 15. **Notice.** Any Notice or other communication required to be given to either party under this Agreement shall be in writing and shall be given in person, by overnight courier, or by certified mail return receipt requested to other party as follows:

LOWER PLATTE SOUTH NATURAL RESOURCES DISTRICT, 3125
Portia, PO Box 83581, Lincoln, Nebraska 68501-3581, Attention Dan Schulz.
TOM DONAHUE, 670 Raymond Road, Lincoln, Nebraska 68428,
- Either party may amend this notice provision in writing addressed to the other party.
16. **Governing Law.** This Agreement shall be governed by the laws of the State of Nebraska.
 17. **Counterparts.** This Agreement may be executed in one or more counterparts, each of which shall be deemed an original but all of which shall constitute one and the same instrument.
 18. **Severability.** Whenever possible, each provision of this Agreement will be interpreted in such a manner as to be effective and valid under applicable law, but if any provision is held to be invalid, illegal, or unenforceable in any respect under applicable law or rule in any jurisdiction, such invalidity, illegality, or unenforceability will not affect any other provision or any other jurisdiction, but this Agreement will be reformed, construed

and enforced in such jurisdiction as if such invalid, illegal, or unenforceable provision had never been contained herein.

19. **Entire Agreement.** This Agreement constitutes the final, complete and exclusive statement of the Agreement of the Parties with respect to the subject matter in this Agreement, and supersedes any and all other prior and contemporaneous agreements and understandings, both written and oral, between the Parties.
20. **Headings.** Headings used in this Agreement are provided for convenience only and shall not be used to construe meaning or intent.
22. **Binding Effect.** This Agreement shall be binding upon and shall inure to the benefit of the Parties, their heirs, personal representatives and successors and permitted assigns.

IN WITNESS WHEREOF, the Parties have executed this Agreement as of the effective date first above stated.

LOWER PLATTE SOUTH NATURAL RESOURCES DISTRICT, a political subdivision of the State of Nebraska,

Executed _____, 2019

BY: _____

Paul D. Zillig, General Manager

Executed _____, 2019

TOM DONAHUE

Signature

Exhibit A: Allen Parcel



2018 Aerials

 Wetland Management Areas - Public Owned  Sections

BALANCE SHEET

PASTURE LEASE - DONAHUE

ALLEN SALINE WETLAND TRACT

2019

Pasture rent on 68 acres for 3 months - \$26/acre for 18 cow/calf pairs \$1,768.00 LPSNRD

Fence project – remove & replace approximately 590 feet of fence

Cost at \$3.00/foot \$1,770.00 Permittee

PASTURE LEASE AGREEMENT

This Agreement made and entered into effective as of the dated executed by both parties, by and between **LOWER PLATTE SOUTH NATURAL RESOURCES DISTRICT**, a political subdivision of the State of Nebraska, 3125 Portia, PO Box 83581, Lincoln, Nebraska 68501-3581, referred to in this Agreement as “the District” and Clint Ratkovec, 2420 31st Road, Brainard, Nebraska 68626, referred to in this Agreement as “Ratkovec”, collectively referred to in this Agreement as “the Parties.”

WITNESSETH:

RECITALS

- A. The District is the owner of a certain tract of land containing approximately 130 acres, more or less, located south of Interstate 80 in the Southeast Quarter of the Northwest Quarter (SE1/4NW1/4) and the South Half of the Northeast Quarter (S1/2NE1/4) Section 26, Township 11 North, Range 7 East of the 6th P.M., Lancaster County, Nebraska, commonly referred to as “the Warner Saline Wetland”, as further described and shown on Exhibit “A” attached hereto and incorporated herein by this reference, and referred to in this Agreement as “the Property.”
- B. Ratkovec wishes to lease the Property as pasture for the purpose of grazing cattle and the District is willing to lease the Property to Ratkovec for that purpose, under the terms and conditions as set forth in this Agreement.

NOW, THEREFORE, in consideration of the above Recitals and the mutual promises and covenants contained in this Agreement, the Parties agree as follows:

1. **Lease Premises.** The District leases the Property to Ratkovec as a pasture for cattle and Ratkovec leases the Property from the District to graze cattle.
2. **Term.** The term of the Pasture Lease shall be for a period beginning June 1, 2019 and shall terminate on November 1, 2019, unless sooner terminated by the District pursuant to paragraph 3 below, or mutually extended by the Parties.
3. **Early Termination.** The District, in its sole discretion, may terminate this Agreement at any time, upon five (5) days written notice, if a condition or conditions exist that in the opinion of the District will permanently or severely damage the viability of the Property as a saline wetland or if Ratkovec violates the grazing limitation provided in paragraph 7 below.
4. **Occupancy and Use.** Ratkovec shall occupy and use the Property only as pasture for grazing cattle, as further described and provided for in this Agreement. Ratkovec shall not use the Property for any other purpose without the prior written consent of the District.

5. **Rent.** There is no cash rent due to the District for the rental of the Property by Ratkovec. In lieu of cash rent; however, Ratkovec shall, at his sole cost and expense, provide certain services and furnish certain equipment and materials, as follows:
- (a) Remove and dispose of 20-8 inch diameter by 8 feet long treated wooden fence posts in existing south fence line as shown on Exhibit A, wood post replacement and fence repair.
 - (b) Provide and install 22-8 inch diameter by 8 feet long treated wooden fence posts four of which shall be used to build or rebuild three “H” braces with three treated wooden supports. The location of the H braces will be field directed by the District.
 - (c) Upon installation of new treated wooden posts, Ratkovec will repair and tighten fence wire as shown on Exhibit A, fence repair.
 - (d) Remove and replace 750 feet of existing fence with new four strand barbed wire fence to be completed no later than June 1, 2019.
 - (e) Provide if necessary, one or more electric fence chargers and install and maintain a suitable electric fence, fencers, fence posts and all other materials or equipment suitable for grazing cattle, all of which shall be removed from the Property no later than November 15, 2019; and
 - (f) Provide adequate watering devises, tanks, mineral blocks and all other equipment, material, and supplies necessary for the proper feeding and care of the cattle to be pastured on the Property, all of which shall be removed from the Property no later than November 15, 2019.
6. **District’s Obligations.** The District shall provide the use of a well for livestock watering located in the southeast corner of the property as shown on Exhibit A.
7. **Grazing.** Ratkovec may graze AND WATER cattle on the Property beginning on June 1, 2019, provided however that all cattle shall be removed from the Property no later than November 1, 2019. No more than 28 cow/calf pairs shall be allowed to be kept on the Property at any one time. Violation of this provision shall constitute grounds for early termination of this Agreement pursuant to paragraph 3 above, unless Ratkovec first obtains in writing the consent of the District. The District may request Ratkovec to reduce the number of cattle on the Property, if adequate forage is not available for feed and Ratkovec shall promptly comply with such request. Ratkovec may use horses or motor vehicles and fencing equipment to perform fence work and to work cattle during the term of the lease

THE DISTRICT MAKES NO WARRANTY IN THIS AGREEMENT, EXPRESSED OR IMPLIED AND SPECIFICALLY DISCLAIMS ANY WARRNTY THAT SUITABLE GRASS AND WATER FOR GRAZING CATTLE WILL BE AVAILABLE ON THE PROPERTY DURING THE ENTIRE GRAZING PERIOD.

8. **Inspection.** The District shall have the right to inspect the Property at all reasonable times without notice.

9. **Improvements.** Ratkovec shall make no improvements to the Property other than what is required in paragraph 5 above, without the prior written consent of the District.

10. **Insurance.** Ratkovec shall obtain and keep in full force during the term of this Agreement, commercial liability and automobile liability insurance covering his actions under this Agreement, each in the minimum amount of \$1,000,000.00. Ratkovec shall include the District as a name insured on the policy of insurance, waive the right of subrogation, and furnish a certificate of insurance to the District prior to the commencement of this Agreement.

11. **Indemnification.** Ratkovec shall indemnify, defend, and hold harmless the District and its officers, directors, agents, and employees, from and against all claims, damages, liabilities, and court awards, including expenses, and reasonable attorney fees, to the extent caused by the negligence or any wrongful act, error, or omission of Ratkovec or his agents or employees, resulting from or related to Ratkovec's actions as set forth in this Agreement. Ratkovec shall provide the District with prompt notice of any claim for which he or the District may be liable. The District shall provide Ratkovec with prompt notice of any claim for which indemnification may be sought under this paragraph.

12. **Dispute Resolution.** Before either party to the Agreement may bring suit in any court concerning any issue relating to this Agreement, such Party must first seek in good faith to resolve the issue through negotiation or other form of nonbinding alternate dispute resolution mutually acceptable to the Parties.

13. **Assignment.** No Party to this Agreement may assign this Agreement to any other person or entity without the prior written consent of the other party.

14. **No Waiver.** No assent, express or implied, by either party to any breach of the other Party shall be deemed to be a waiver or any succeeding or continuing breach.

15. **Amendments.** No amendment or other modification to this Agreement shall be effective unless it is in writing and approved by the Parties. Such amendment shall become effective only after it has been executed by the Parties.

16. **Notice.** Any Notice or other communication required to be given to either party under this Agreement shall be in writing and shall be given in person, by overnight courier, or by certified mail return receipt requested to other party as follows:

LOWER PLATTE SOUTH NATURAL RESOURCES DISTRICT, 3125
Portia, PO Box 83581, Lincoln, Nebraska 68501-3581, Attention Dan Schulz.

Clint Ratkovec, 2420 31st Road, Brainard, Nebraska.

Either party may amend this notice provision in writing addressed to the other party.

17. **Governing Law.** This Agreement shall be governed by the laws of the State of Nebraska.

18. **Counterparts.** This Agreement may be executed in one or more counterparts, each of which shall be deemed an original but all of which shall constitute one and the same instrument.

19. **Severability.** Whenever possible, each provision of this Agreement will be interpreted in such a manner as to be effective and valid under applicable law, but if any provision is held to be invalid, illegal, or unenforceable in any respect under applicable law or rule in any jurisdiction, such invalidity, illegality, or unenforceability will not affect any other provision or any other jurisdiction, but this Agreement will be reformed, construed and enforced in such jurisdiction as if such invalid, illegal, or unenforceable provision had never been contained herein.

20. **Entire Agreement.** This Agreement constitutes the final, complete and exclusive statement of the Agreement of the Parties with respect to the subject matter in this Agreement, and supersedes any and all other prior and contemporaneous agreements and understandings, both written and oral, between the Parties.

21. **Headings.** Headings used in this Agreement are provided for convenience only and shall not be used to construe meaning or intent.

22. **Binding Effect.** This Agreement shall be binding upon and shall inure to the benefit of the Parties, their heirs, personal representatives and successors and permitted assigns.

IN WITNESS WHEREOF, the Parties have executed this Agreement as of the effective date first above stated.

**LOWER PLATTE SOUTH NATURAL RESOURCES
DISTRICT**, a political subdivision of the State of Nebraska,

Executed _____ 2019

BY: _____

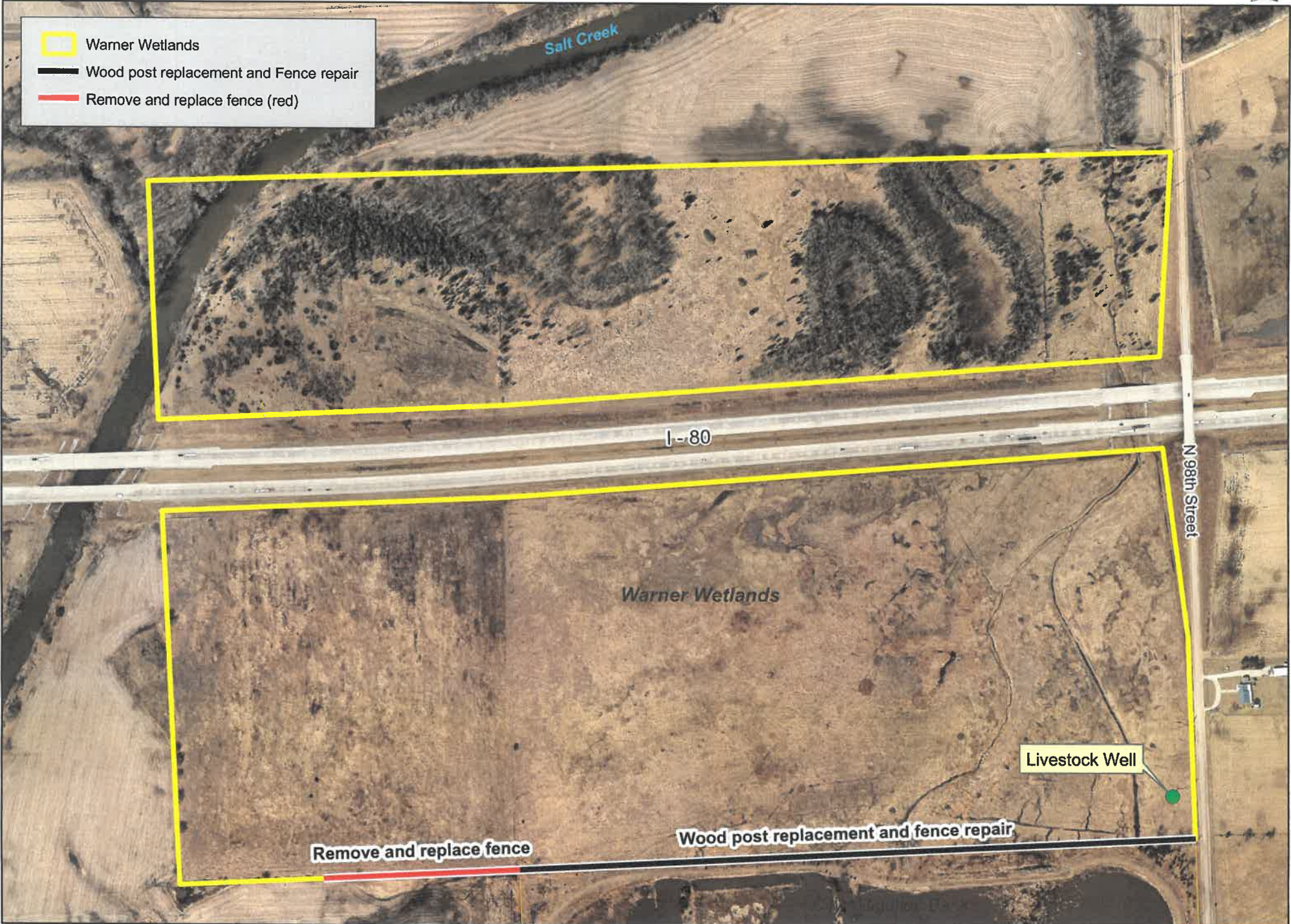
Paul D. Zillig, General Manager

Executed _____ 2019

Clint Ratkovec

Signature

Exhibit A: Warner Wetlands



- Warner Wetlands
- Wood post replacement and Fence repair
- Remove and replace fence (red)

Salt Creek

I-80

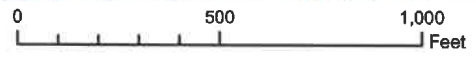
N 98th Street

Warner Wetlands

Livestock Well

Remove and replace fence

Wood post replacement and fence repair



BALANCE SHEET

PASTURE LEASE – RATKOVEC

WARNER SOUTH SALINE WETLAND

2019

Pasture rent on 130 acres for 5 months - \$32/acre for 28 cow/calf pairs \$4,160 LPSNRD

South fence line repair \$1,958.88

South fence line remove and replace 750 feet at \$3.00/foot \$2,250.00

\$4,208.88 Ratkovec