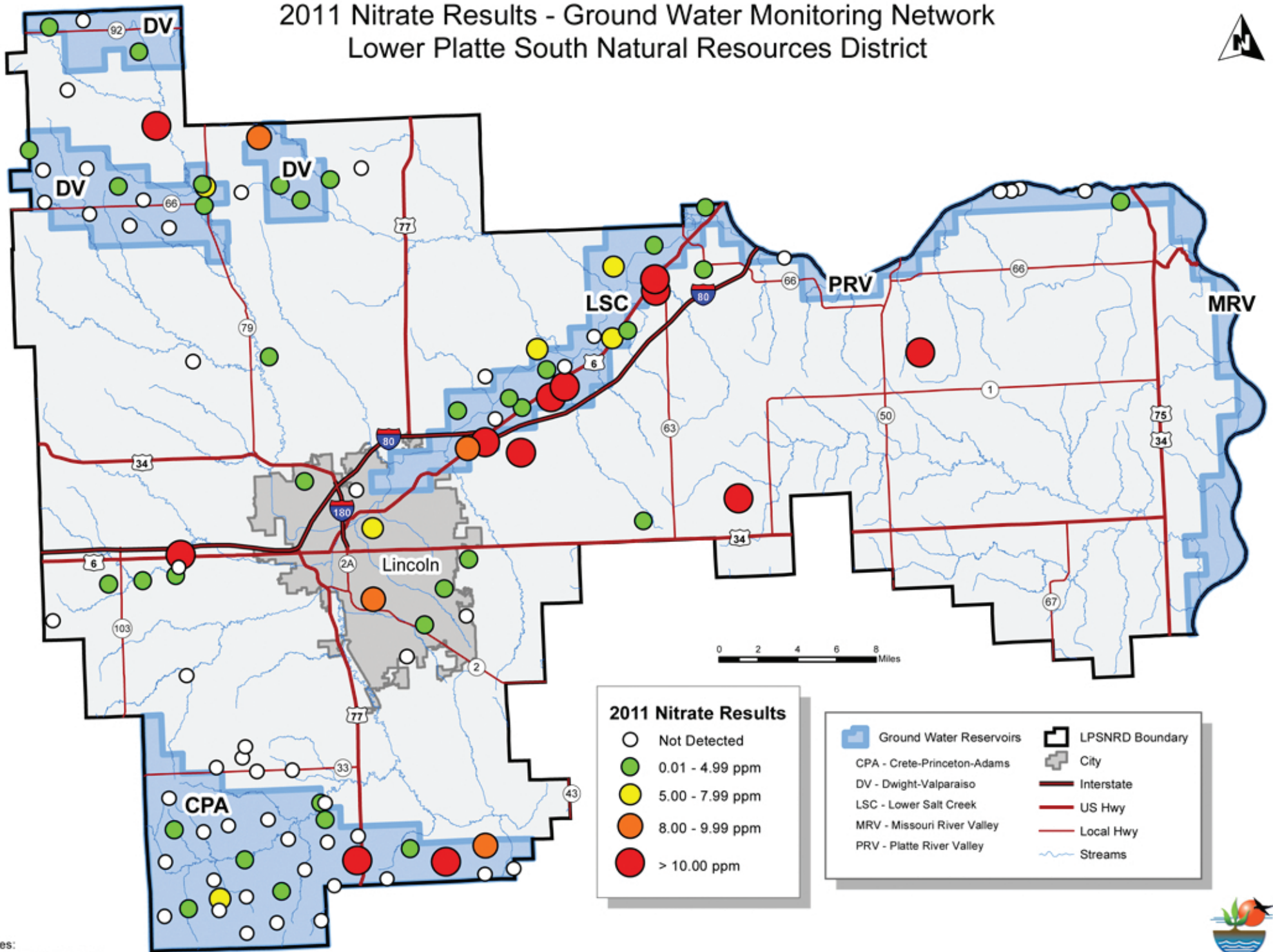


# 2011 Nitrate Results - Ground Water Monitoring Network Lower Platte South Natural Resources District



**2011 Nitrate Results**

- Not Detected
- 0.01 - 4.99 ppm
- 5.00 - 7.99 ppm
- 8.00 - 9.99 ppm
- > 10.00 ppm

- Ground Water Reservoirs
- CPA - Crete-Princeton-Adams
- DV - Dwight-Valparaiso
- LSC - Lower Salt Creek
- MRV - Missouri River Valley
- PRV - Platte River Valley
- LPSNRD Boundary
- City
- Interstate
- US Hwy
- Local Hwy
- Streams

Sources:  
Lower Platte South NRD;  
Nebraska Dept. of Natural Resources;  
Nebraska Dept. of Roads



Map Created By: Shaula D. Ross  
Date Created: February 2012